



Datasheet for ABIN7128260
anti-ADH1A antibody



[Go to Product page](#)

3 Images

Overview

Quantity:	100 µL
Target:	ADH1A
Reactivity:	Human
Host:	Rabbit
Clonality:	Polyclonal
Conjugate:	This ADH1A antibody is un-conjugated
Application:	Western Blotting (WB), ELISA, Immunohistochemistry (IHC)

Product Details

Immunogen:	Fusion protein of Human ADH1A
Isotype:	IgG
Cross-Reactivity:	Human, Mouse
Purification:	Antigen affinity purification

Target Details

Target:	ADH1A
Alternative Name:	ADH1A (ADH1A Products)
Background:	Background: This gene encodes a member of the alcohol dehydrogenase family. The encoded protein is the alpha subunit of class I alcohol dehydrogenase, which consists of several homo- and heterodimers of alpha, beta and gamma subunits. Alcohol dehydrogenases catalyze the oxidation of alcohols to aldehydes. This gene is active in the liver in early fetal life but only

Target Details

weakly active in adult liver. This gene is found in a cluster with six additional alcohol dehydrogenase genes, including those encoding the beta and gamma subunits, on the long arm of chromosome 4. Mutations in this gene may contribute to variation in certain personality traits and substance dependence.

Aliases: ADH alpha subunit antibody, ADH antibody, ADH1 antibody, ADH1A antibody, ADH1A_HUMAN antibody, Alcohol dehydrogenase 1 (class I), alpha polypeptide antibody, Alcohol dehydrogenase 1 antibody, Alcohol dehydrogenase 1A (class I), alpha polypeptide antibody, Alcohol dehydrogenase 1A antibody, Alcohol dehydrogenase subunit alpha antibody, Aldehyde reductase antibody

UniProt: [P07327](#)

Application Details

Application Notes: ELISA:1:2000-1:5000, WB:1:500-1:2000, IHC:1:25-1:100,

Restrictions: For Research Use only

Handling

Format: Liquid

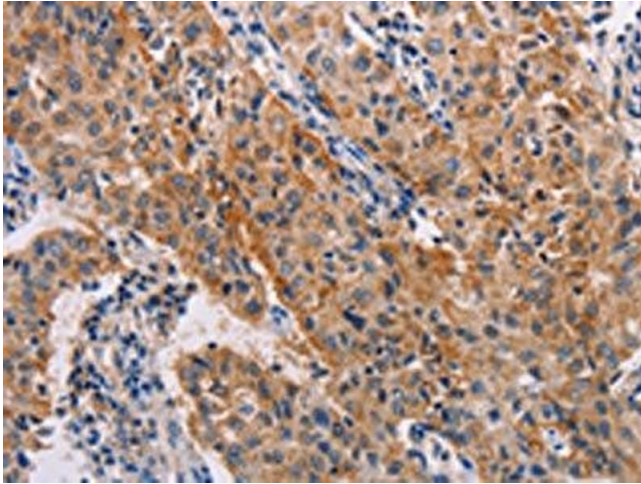
Buffer: -20 °C, pH 7.4 PBS, 0.05 % Sodium azide, 40 % Glycerol

Preservative: Sodium azide

Precaution of Use: This product contains Sodium azide: a POISONOUS AND HAZARDOUS SUBSTANCE which should be handled by trained staff only.

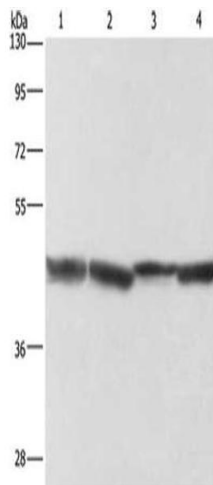
Storage: -20 °C,-80 °C

Storage Comment: Upon receipt, store at -20°C or -80°C. Avoid repeated freeze.



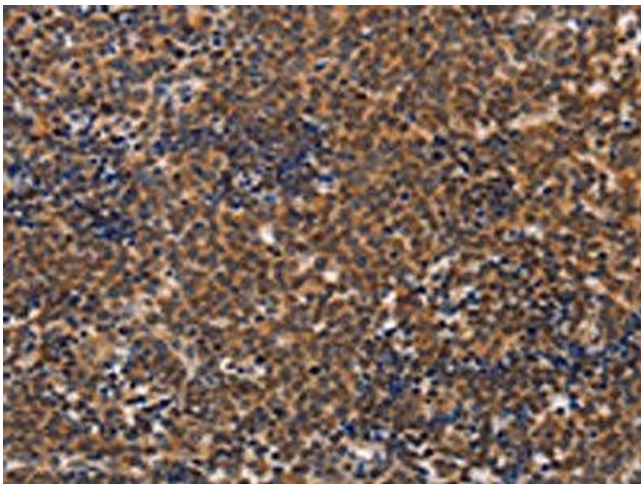
Immunohistochemistry

Image 1. The image on the left is immunohistochemistry of paraffin-embedded Human lung cancer tissue using ABIN7128260(ADH1A Antibody) at dilution 1/20, on the right is treated with fusion protein. (Original magnification: x200)



Western Blotting

Image 2. Gel: 10 % SDS-PAGE, Lysate: 40 µg, Lane 1-4: human fetal liver tissue, Human liver cancer tissue, mouse liver tissue, human hepatocellular carcinoma tissue, Primary antibody: ABIN7128260(ADH1A Antibody) at dilution 1/250, Secondary antibody: Goat anti rabbit IgG at 1/8000 dilution, Exposure time: 10 seconds



Immunohistochemistry

Image 3. The image on the left is immunohistochemistry of paraffin-embedded Human lymphoma tissue using ABIN7128260(ADH1A Antibody) at dilution 1/20, on the right is treated with fusion protein. (Original magnification: x200)