



[Go to Product page](#)

Datasheet for ABIN7128282

## anti-AGA antibody

### 3 Images

#### Overview

Quantity:	100 µL
Target:	AGA
Reactivity:	Human
Host:	Rabbit
Clonality:	Polyclonal
Conjugate:	This AGA antibody is un-conjugated
Application:	Western Blotting (WB), ELISA, Immunohistochemistry (IHC)

#### Product Details

Immunogen:	Fusion protein of Human AGA
Isotype:	IgG
Cross-Reactivity:	Human, Mouse, Rat
Purification:	Antigen affinity purification

#### Target Details

Target:	AGA
Alternative Name:	AGA ( <a href="#">AGA Products</a> )
Background:	Background: Aspartylglucosaminidase is involved in the catabolism of N-linked oligosaccharides of glycoproteins. It cleaves asparagine from N-acetylglucosamines as one of the final steps in the lysosomal breakdown of glycoproteins. The lysosomal storage disease aspartylglycosaminuria is caused by a deficiency in the AGA enzyme. Alternatively spliced

## Target Details

---

transcript variants have been identified.

Aliases: Aga antibody, AGU antibody, Aspartylglucosaminidase antibody, Aspartylglucosylamine deaspartylase antibody, Aspartylglycosaminuria antibody, ASPG\_HUMAN antibody, ASRG antibody, GA antibody, Glycosylasparaginase antibody, Glycosylasparaginase beta chain antibody, N(4)-(beta-N-acetylglucosaminy)-L-asparaginase antibody, N4 (N acetyl beta glucosaminy) L asparagine amidase antibody, N4-(N-acetyl-beta-glucosaminy)-L-asparagine amidase antibody

---

UniProt: [P20933](#)

## Application Details

---

Application Notes: ELISA:1:1000-1:2000, WB:1:200-1:1000, IHC:1:15-1:50,

Restrictions: For Research Use only

## Handling

---

Format: Liquid

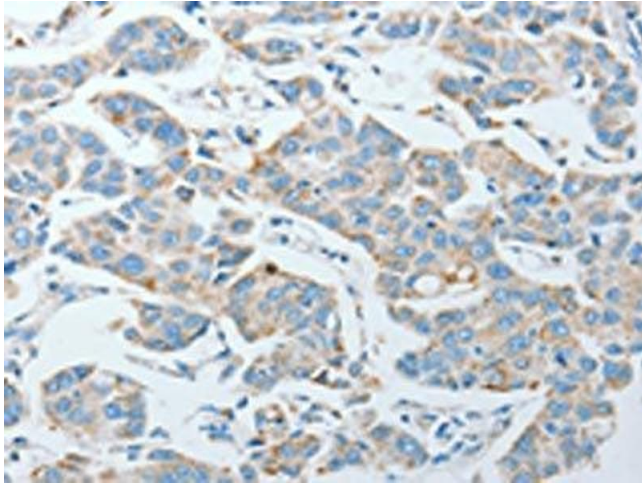
Buffer: -20 °C, pH 7.4 PBS, 0.05 % Sodium azide, 40 % Glycerol

Preservative: Sodium azide

Precaution of Use: This product contains Sodium azide: a POISONOUS AND HAZARDOUS SUBSTANCE which should be handled by trained staff only.

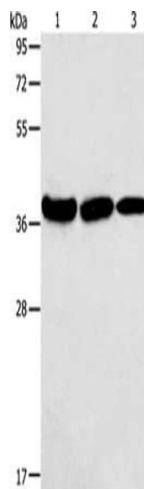
Storage: -20 °C,-80 °C

Storage Comment: Upon receipt, store at -20°C or -80°C. Avoid repeated freeze.



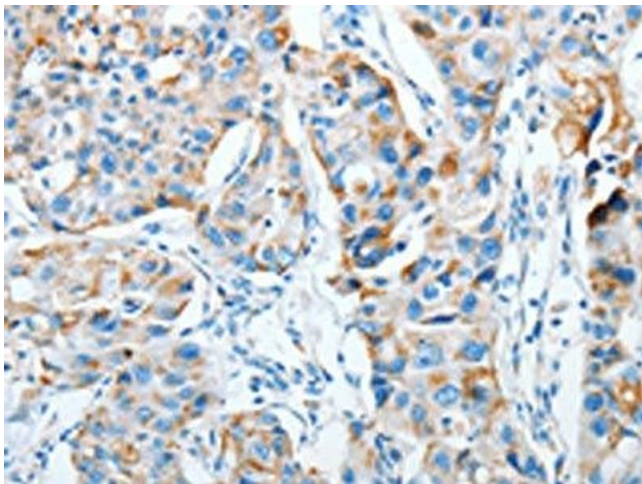
### Immunohistochemistry

**Image 1.** The image on the left is immunohistochemistry of paraffin-embedded Human lung cancer tissue using ABIN7128282(AGA Antibody) at dilution 1/20, on the right is treated with fusion protein. (Original magnification: x200)



### Western Blotting

**Image 2.** Gel: 10 % SDS-PAGE, Lysate: 40 µg, Lane 1-3: Mouse kidney tissue, human testis tissue, Human thyroid cancer tissue, Primary antibody: ABIN7128282(AGA Antibody) at dilution 1/100, Secondary antibody: Goat anti rabbit IgG at 1/8000 dilution, Exposure time: 10 seconds



### Immunohistochemistry

**Image 3.** The image on the left is immunohistochemistry of paraffin-embedded Human breast cancer tissue using ABIN7128282(AGA Antibody) at dilution 1/20, on the right is treated with fusion protein. (Original magnification: x200)