



Datasheet for ABIN7128285

anti-AGBL3 antibody



[Go to Product page](#)

1 Image

Overview

Quantity:	100 µL
Target:	AGBL3
Reactivity:	Human
Host:	Rabbit
Clonality:	Polyclonal
Conjugate:	This AGBL3 antibody is un-conjugated
Application:	ELISA, Immunohistochemistry (IHC)

Product Details

Immunogen:	Fusion protein of Human AGBL3
Isotype:	IgG
Cross-Reactivity:	Human, Mouse
Purification:	Antigen affinity purification

Target Details

Target:	AGBL3
Alternative Name:	AGBL3 (AGBL3 Products)
Background:	Background: CCP3 (cytosolic carboxypeptidase 3), also known as AGBL3 (ATP/GTP-binding protein-like 3), is a 1,001 amino acid cytosolic protein that exists as four alternatively spliced isoforms and belongs to the peptidase M14 family. As a metallo-carboxypeptidase, CCP3 binds one zinc ion per subunit and may play a role in the processing of tubulin. The gene that encodes

Target Details

CCP3 consists of approximately 161,457 bases and maps to human chromosome 7q33. Housing over 1,000 genes, chromosome 7 comprises nearly 5 % of the human genome. Chromosome 7 has been linked to Osteogenesis imperfecta, Pendred syndrome, Lissencephaly, Citrullinemia and Shwachman-Diamond syndrome.

Aliases: CCP3 antibody, Agbl3 antibody, ATP/GTP-binding protein-like 3 antibody, CBPC3_HUMAN antibody, Cytosolic carboxypeptidase 3 antibody

UniProt: [Q8NEM8](#)

Application Details

Application Notes: ELISA:1:2000-1:5000, IHC:1:25-1:100,

Restrictions: For Research Use only

Handling

Format: Liquid

Buffer: -20 °C, pH 7.4 PBS, 0.05 % Sodium azide, 40 % Glycerol

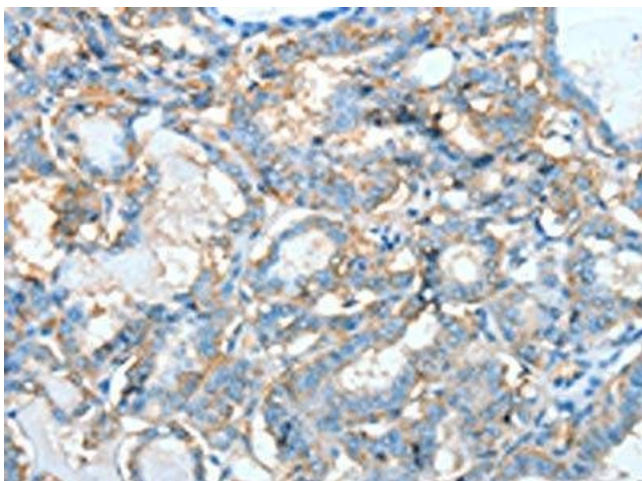
Preservative: Sodium azide

Precaution of Use: This product contains Sodium azide: a POISONOUS AND HAZARDOUS SUBSTANCE which should be handled by trained staff only.

Storage: -20 °C,-80 °C

Storage Comment: Upon receipt, store at -20°C or -80°C. Avoid repeated freeze.

Images



Immunohistochemistry

Image 1. The image on the left is immunohistochemistry of paraffin-embedded Human thyroid cancer tissue using ABIN7128285(AGBL3 Antibody) at dilution 1/45, on the right is treated with fusion protein. (Original magnification: x200)