

Datasheet for ABIN7128286

anti-AGBL3 antibody**2** Images[Go to Product page](#)

Overview

Quantity:	100 µL
Target:	AGBL3
Reactivity:	Human
Host:	Rabbit
Clonality:	Polyclonal
Conjugate:	This AGBL3 antibody is un-conjugated
Application:	ELISA, Immunohistochemistry (IHC), Western Blotting (WB)

Product Details

Immunogen:	Fusion protein of Human AGBL3
Isotype:	IgG
Cross-Reactivity:	Human, Mouse
Purification:	Antigen affinity purification

Target Details

Target:	AGBL3
Alternative Name:	AGBL3 (AGBL3 Products)
Background:	Background: This protein belongs to the peptidase M14 family. It has a function in the processing of cytosolic proteins such as alpha-tubulin, which is known to be modified by the removal of a C-terminal tyrosine. Every subunit binds 1 zinc ion. It has high levels expression in digestive and blood/hematopoietic system, like intestine, urinary, kidney and bone marrow.

Target Details

Aliases: CCP3 antibody, Agbl3 antibody, ATP/GTP-binding protein-like 3 antibody, CBPC3_HUMAN antibody, Cytosolic carboxypeptidase 3 antibody

UniProt: [Q8NEM8](#)

Application Details

Application Notes: ELISA:1:1000-1:2000, WB:1:200-1:1000, IHC:1:25-1:100,

Restrictions: For Research Use only

Handling

Format: Liquid

Buffer: -20 °C, pH 7.4 PBS, 0.05 % Sodium azide, 40 % Glycerol

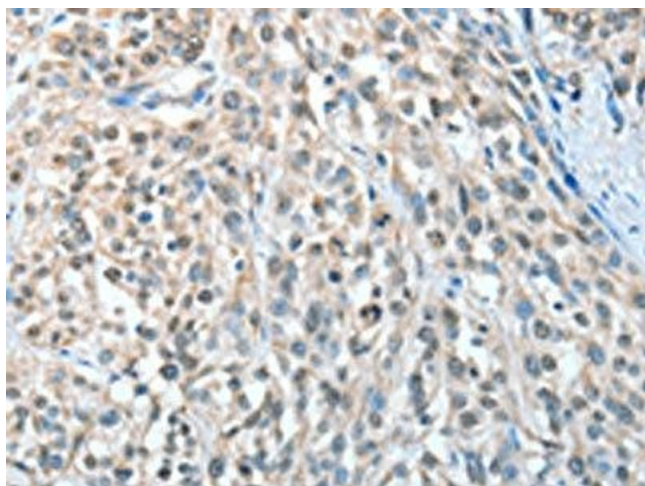
Preservative: Sodium azide

Precaution of Use: This product contains Sodium azide: a POISONOUS AND HAZARDOUS SUBSTANCE which should be handled by trained staff only.

Storage: -20 °C, -80 °C

Storage Comment: Upon receipt, store at -20°C or -80°C. Avoid repeated freeze.

Images



Immunohistochemistry

Image 1. The image on the left is immunohistochemistry of paraffin-embedded Human esophagus cancer tissue using ABIN7128286(AGBL3 Antibody) at dilution 1/25, on the right is treated with fusion protein. (Original magnification: x200)



Western Blotting

Image 2. Gel: 8+12 % SDS-PAGE, Lysate: 40 µg, Lane: Mouse pancreas tissue, Primary antibody: ABIN7128286(AGBL3 Antibody) at dilution 1/250, Secondary antibody: Goat anti rabbit IgG at 1/8000 dilution, Exposure time: 20 seconds