

Datasheet for ABIN7128287

**anti-AGBL5 antibody**[Go to Product page](#)**2** Images

## Overview

Quantity:	100 µL
Target:	AGBL5
Reactivity:	Human
Host:	Rabbit
Clonality:	Polyclonal
Conjugate:	This AGBL5 antibody is un-conjugated
Application:	ELISA, Immunohistochemistry (IHC)

## Product Details

Immunogen:	Fusion protein of Human AGBL5
Isotype:	IgG
Cross-Reactivity:	Human
Purification:	Antigen affinity purification

## Target Details

Target:	AGBL5
Alternative Name:	AGBL5 ( <a href="#">AGBL5 Products</a> )
Background:	Background: Metalloprotease that mediates tubulin deglutamylation. Specifically catalyzes the deglutamylation of the branching point glutamate side chains generated by post-translational glutamylation in proteins such as tubulins. In contrast, it is not able to act as a long-chain deglutamylase that shortens long polyglutamate chains, a process catalyzed by

## Target Details

AGTPBP1/ CCP1, AGBL1/CCP4 and AGBL4/CCP6.

Aliases: AGBL5 antibody, ATP/GTP binding protein like 5 antibody, ATP/GTP-binding protein-like 5 antibody, CBPC5\_HUMAN antibody, CCP5 antibody, Cytosolic carboxypeptidase like protein 5 antibody, Cytosolic carboxypeptidase-like protein 5 antibody, FLJ21839 antibody, Hypothetical protein FLJ21839 antibody

UniProt: [Q8NDL9](#)

## Application Details

Application Notes: ELISA:1:2000-1:5000, IHC:1:25-1:100,

Restrictions: For Research Use only

## Handling

Format: Liquid

Buffer: -20 °C, pH 7.4 PBS, 0.05 % Sodium azide, 40 % Glycerol

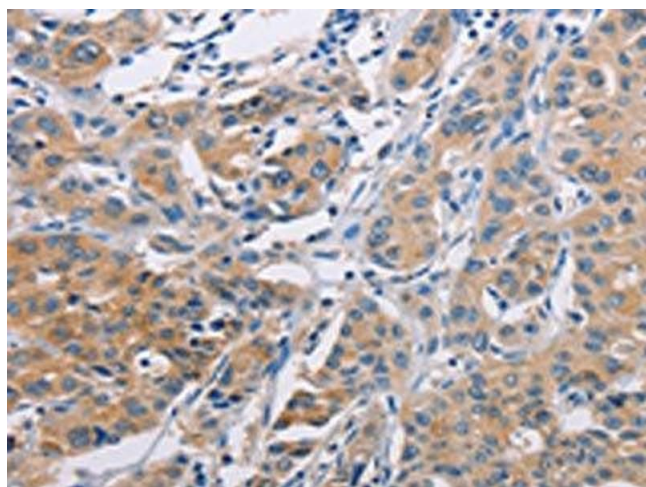
Preservative: Sodium azide

Precaution of Use: This product contains Sodium azide: a POISONOUS AND HAZARDOUS SUBSTANCE which should be handled by trained staff only.

Storage: -20 °C,-80 °C

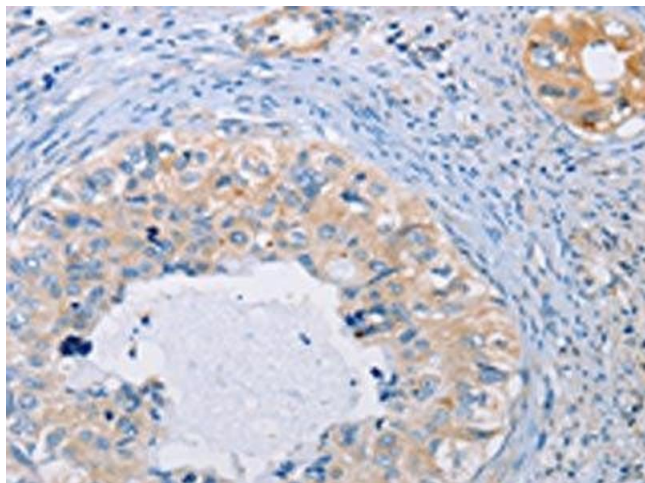
Storage Comment: Upon receipt, store at -20°C or -80°C. Avoid repeated freeze.

## Images



### Immunohistochemistry

**Image 1.** The image on the left is immunohistochemistry of paraffin-embedded Human lung cancer tissue using ABIN7128287(AGBL5 Antibody) at dilution 1/30, on the right is treated with fusion protein. (Original magnification: x200)



#### Immunohistochemistry

**Image 2.** The image on the left is immunohistochemistry of paraffin-embedded Human cervical cancer tissue using ABIN7128287(AGBL5 Antibody) at dilution 1/30, on the right is treated with fusion protein. (Original magnification: x200)