

Datasheet for ABIN7128398
anti-ANAPC13 antibody

2 Images

[Go to Product page](#)

Overview

Quantity:	100 µL
Target:	ANAPC13
Reactivity:	Human
Host:	Rabbit
Clonality:	Polyclonal
Conjugate:	This ANAPC13 antibody is un-conjugated
Application:	ELISA, Immunohistochemistry (IHC)

Product Details

Immunogen:	Fusion protein of Human ANAPC13
Isotype:	IgG
Cross-Reactivity:	Human, Mouse
Purification:	Antigen affinity purification

Target Details

Target:	ANAPC13
Alternative Name:	ANAPC13 (ANAPC13 Products)
Background:	Background: This gene encodes a component of the anaphase promoting complex, a large ubiquitin-protein ligase that controls cell cycle progression by regulating the degradation of cell cycle regulators such as B-type cyclins. The encoded protein is evolutionarily conserved and is required for the integrity and ubiquitin ligase activity of the anaphase promoting complex.

Target Details

Pseudogenes and splice variants have been found for this gene, however, the biological validity of some of the splice variants has not been determined.

Aliases: ANAPC13 antibody, Anaphase-promoting complex subunit 13 antibody, APC13 antibody, APC13_HUMAN antibody, Cyclosome subunit 13 antibody, DKFZP566D193 antibody, SWM1 antibody

UniProt: [Q9BS18](#)

Application Details

Application Notes: ELISA:1:2000-1:5000, IHC:1:25-1:100,

Restrictions: For Research Use only

Handling

Format: Liquid

Buffer: -20 °C, pH 7.4 PBS, 0.05 % Sodium azide, 40 % Glycerol

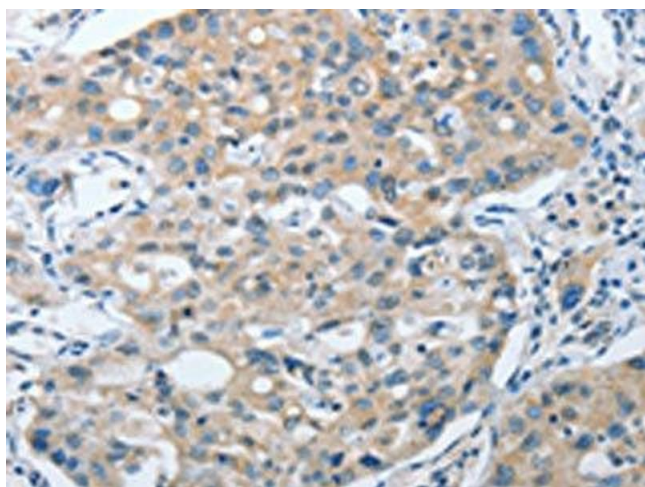
Preservative: Sodium azide

Precaution of Use: This product contains Sodium azide: a POISONOUS AND HAZARDOUS SUBSTANCE which should be handled by trained staff only.

Storage: -20 °C,-80 °C

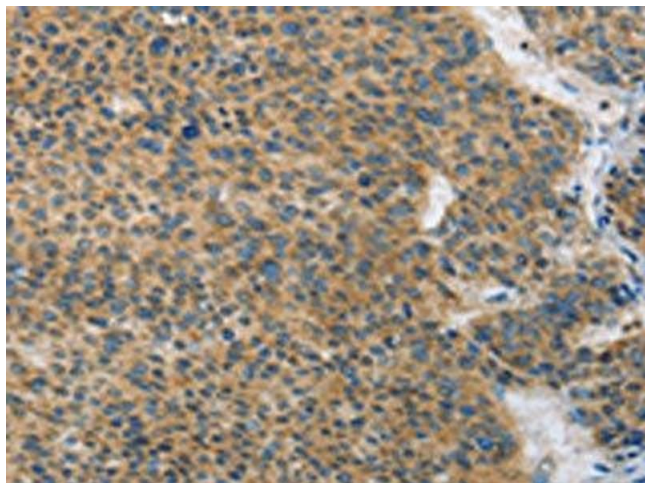
Storage Comment: Upon receipt, store at -20°C or -80°C. Avoid repeated freeze.

Images



Immunohistochemistry

Image 1. The image on the left is immunohistochemistry of paraffin-embedded Human lung cancer tissue using ABIN7128398(ANAPC13 Antibody) at dilution 1/25, on the right is treated with fusion protein. (Original magnification: x200)



Immunohistochemistry

Image 2. The image on the left is immunohistochemistry of paraffin-embedded Human liver cancer tissue using ABIN7128398(ANAPC13 Antibody) at dilution 1/25, on the right is treated with fusion protein. (Original magnification: x200)