

Datasheet for ABIN7128400

anti-ANAPC2 antibody**2** Images[Go to Product page](#)

Overview

Quantity:	100 µL
Target:	ANAPC2
Reactivity:	Human
Host:	Rabbit
Clonality:	Polyclonal
Conjugate:	This ANAPC2 antibody is un-conjugated
Application:	Western Blotting (WB), ELISA, Immunohistochemistry (IHC)

Product Details

Immunogen:	Fusion protein of Human ANAPC2
Isotype:	IgG
Cross-Reactivity:	Human, Mouse
Purification:	Antigen affinity purification

Target Details

Target:	ANAPC2
Alternative Name:	ANAPC2 (ANAPC2 Products)
Background:	Background: A large protein complex, termed the anaphase-promoting complex (APC), or the cyclosome, promotes metaphase-anaphase transition by ubiquitinating its specific substrates such as mitotic cyclins and anaphase inhibitor, which are subsequently degraded by the 26S proteasome. Biochemical studies have shown that the vertebrate APC contains eight subunits.

Target Details

The composition of the APC is highly conserved in organisms from yeast to humans. The product of this gene is a component of the complex and shares sequence similarity with a recently identified family of proteins called cullins, which may also be involved in ubiquitin-mediated degradation.

Aliases: anapc2 antibody, Anaphase promoting complex subunit 2 antibody, Anaphase-promoting complex subunit 2 antibody, ANC2_HUMAN antibody, APC2 antibody, Cyclosome subunit 2 antibody, KIAA1406 antibody, OTTHUMP00000022692 antibody, RP11 350O14.5 antibody

UniProt: [Q9UJX6](#)

Pathways: [Regulation of Cell Size](#)

Application Details

Application Notes: ELISA:1:2000-1:5000, WB:1:200-1:1000, IHC:1:25-1:100,

Restrictions: For Research Use only

Handling

Format: Liquid

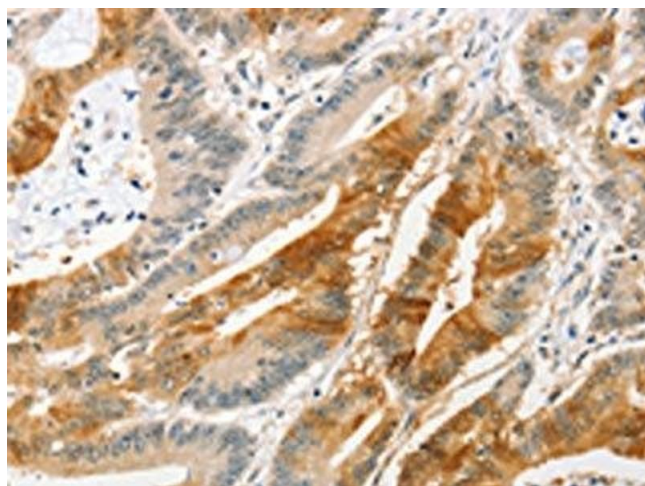
Buffer: -20 °C, pH 7.4 PBS, 0.05 % Sodium azide, 40 % Glycerol

Preservative: Sodium azide

Precaution of Use: This product contains Sodium azide: a POISONOUS AND HAZARDOUS SUBSTANCE which should be handled by trained staff only.

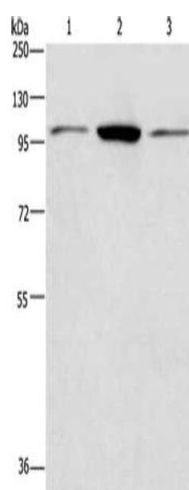
Storage: -20 °C, -80 °C

Storage Comment: Upon receipt, store at -20°C or -80°C. Avoid repeated freeze.



Immunohistochemistry

Image 1. The image on the left is immunohistochemistry of paraffin-embedded Human colon cancer tissue using ABIN7128400(ANAPC2 Antibody) at dilution 1/20, on the right is treated with fusion protein. (Original magnification: x200)



Western Blotting

Image 2. Gel: 8 % SDS-PAGE, Lysate: 40 µg, Lane 1-3: Hela cells, Jurkat cells, NIH/3T3 cells, Primary antibody: ABIN7128400(ANAPC2 Antibody) at dilution 1/200, Secondary antibody: Goat anti rabbit IgG at 1/8000 dilution, Exposure time: 40 seconds