

Datasheet for ABIN7128510

anti-ARL2 antibody[Go to Product page](#)**1** Image

Overview

Quantity:	100 µL
Target:	ARL2
Reactivity:	Human
Host:	Rabbit
Clonality:	Polyclonal
Conjugate:	This ARL2 antibody is un-conjugated
Application:	ELISA, Immunohistochemistry (IHC)

Product Details

Immunogen:	Fusion protein of Human ARL2
Isotype:	IgG
Cross-Reactivity:	Human, Mouse, Rat
Purification:	Antigen affinity purification

Target Details

Target:	ARL2
Alternative Name:	ARL2 (ARL2 Products)
Background:	Background: This gene encodes a small GTP-binding protein of the RAS superfamily which functions as an ADP-ribosylation factor (ARF). The encoded protein is one of a functionally distinct group of ARF-like genes. Small GTP-binding protein which cycles between an inactive GDP-bound and an active GTP-bound form, and the rate of cycling is regulated by guanine

Target Details

nucleotide exchange factors (GEF) and GTPase-activating proteins (GAP). GTP-binding protein that does not act as an allosteric activator of the cholera toxin catalytic subunit. Regulates formation of new microtubules and centrosome integrity. Prevents the TBCD-induced microtubule destruction.

Aliases: ADP ribosylation factor like 2 antibody, ADP-ribosylation factor-like protein 2 antibody, ARFL2 antibody, Arl184 antibody, Arl2 antibody, ARL2_HUMAN antibody

UniProt: [P36404](#)

Pathways: [Cell-Cell Junction Organization, Maintenance of Protein Location](#)

Application Details

Application Notes: ELISA:1:1000-1:2000, IHC:1:15-1:50,

Restrictions: For Research Use only

Handling

Format: Liquid

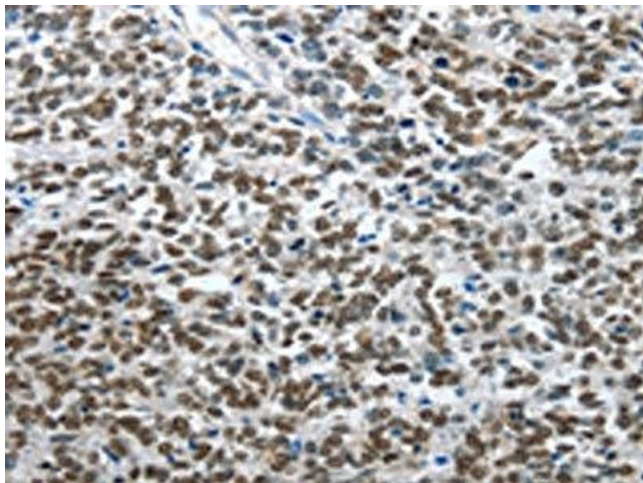
Buffer: -20 °C, pH 7.4 PBS, 0.05 % Sodium azide, 40 % Glycerol

Preservative: Sodium azide

Precaution of Use: This product contains Sodium azide: a POISONOUS AND HAZARDOUS SUBSTANCE which should be handled by trained staff only.

Storage: -20 °C, -80 °C

Storage Comment: Upon receipt, store at -20°C or -80°C. Avoid repeated freeze.



Immunohistochemistry

Image 1. The image on the left is immunohistochemistry of paraffin-embedded Human ovarian cancer tissue using ABIN7128510(ARL2 Antibody) at dilution 1/15, on the right is treated with fusion protein. (Original magnification: x200)