

Datasheet for ABIN7128511

anti-ARL4A antibody

3 Images

[Go to Product page](#)

Overview

Quantity:	100 µL
Target:	ARL4A
Reactivity:	Human
Host:	Rabbit
Clonality:	Polyclonal
Conjugate:	This ARL4A antibody is un-conjugated
Application:	ELISA, Western Blotting (WB), Immunohistochemistry (IHC)

Product Details

Immunogen:	Fusion protein of Human ARL4A
Isotype:	IgG
Cross-Reactivity:	Human, Mouse, Rat
Purification:	Antigen affinity purification

Target Details

Target:	ARL4A
Alternative Name:	ARL4A (ARL4A Products)
Background:	Background: ADP-ribosylation factor-like 4A is a member of the ADP-ribosylation factor family of GTP-binding proteins. ARL4A is similar to ARL4C and ARL4D and each has a nuclear localization signal and an unusually high guanine nucleotide exchange rate. ARL4A is located in both the nuclear and extranuclear cell compartments. Multiple transcript variants encoding

Target Details

the same protein have been found for this gene

Aliases: ADP ribosylation factor like 4 antibody, ADP ribosylation factor like 4A antibody, ADP ribosylation factor like GTPase 4A antibody, ADP-ribosylation factor-like protein 4A antibody, ARL 4 antibody, ARL4 antibody, Arl4a antibody, ARL4A_HUMAN antibody

UniProt: [P40617](#)

Pathways: [Brown Fat Cell Differentiation](#)

Application Details

Application Notes: ELISA:1:1000-1:2000, WB:1:200-1:1000, IHC:1:50-1:200,

Restrictions: For Research Use only

Handling

Format: Liquid

Buffer: -20 °C, pH 7.4 PBS, 0.05 % Sodium azide, 40 % Glycerol

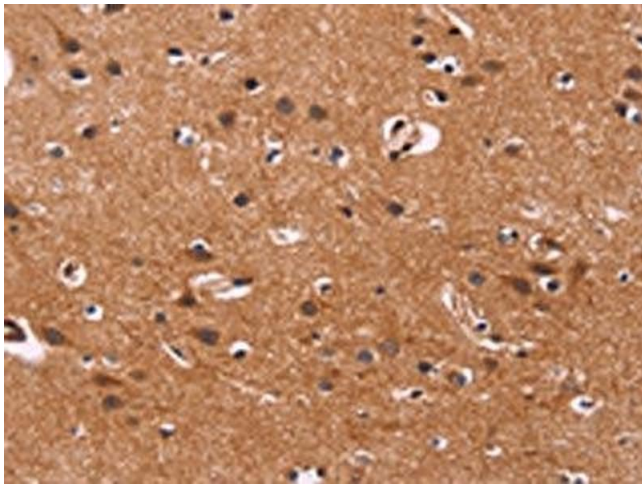
Preservative: Sodium azide

Precaution of Use: This product contains Sodium azide: a POISONOUS AND HAZARDOUS SUBSTANCE which should be handled by trained staff only.

Storage: -20 °C,-80 °C

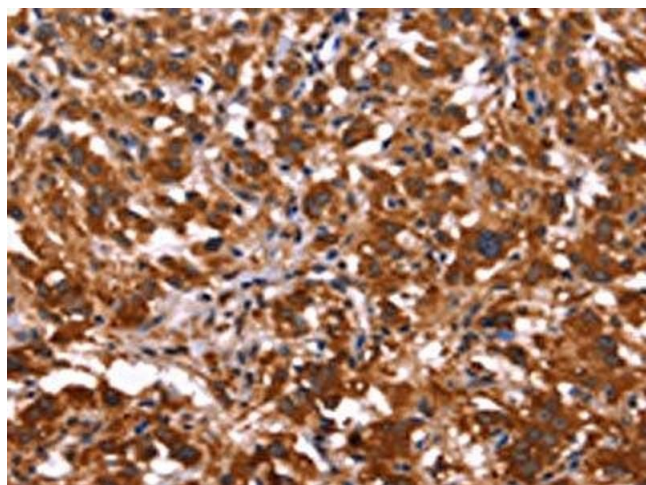
Storage Comment: Upon receipt, store at -20°C or -80°C. Avoid repeated freeze.

Images



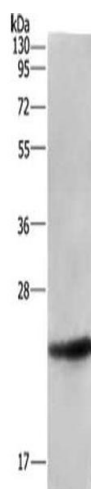
Immunohistochemistry

Image 1. The image on the left is immunohistochemistry of paraffin-embedded Human brain tissue using ABIN7128511(ARL4A Antibody) at dilution 1/50, on the right is treated with fusion protein. (Original magnification: x200)



Immunohistochemistry

Image 2. The image on the left is immunohistochemistry of paraffin-embedded Human thyroid cancer tissue using ABIN7128511 (ARL4A Antibody) at dilution 1/50, on the right is treated with fusion protein. (Original magnification: x200)



Western Blotting

Image 3. Gel: 10 % SDS-PAGE, Lysate: 40 µg, Lane: Human fetal liver tissue, Primary antibody: ABIN7128511 (ARL4A Antibody) at dilution 1/533, Secondary antibody: Goat anti rabbit IgG at 1/8000 dilution, Exposure time: 30 seconds