

Datasheet for ABIN7128517

anti-ARL8A antibody**2** Images[Go to Product page](#)

Overview

Quantity:	100 µL
Target:	ARL8A
Reactivity:	Human
Host:	Rabbit
Clonality:	Polyclonal
Conjugate:	This ARL8A antibody is un-conjugated
Application:	ELISA, Immunohistochemistry (IHC)

Product Details

Immunogen:	Fusion protein of Human ARL8A
Isotype:	IgG
Cross-Reactivity:	Human, Mouse
Purification:	Antigen affinity purification

Target Details

Target:	ARL8A
Alternative Name:	ARL8A (ARL8A Products)
Background:	Background: ARL8A (ADP-ribosylation factor-like protein 8A), also known as ARL10B or GIE2, is a 186 amino acid protein that localizes to the membrane of late endosomes. Expressed ubiquitously, ARL8A is thought to play a role in lysosomal motility and may also be involved in chromosomal segregation events. The gene encoding ARL8A maps to human chromosome 1,

Target Details

which spans 260 million base pairs, houses over 3,000 genes and comprises nearly 8 % of the human genome.

Aliases: ARL8A antibody, ARL10B antibody, GIE2ADP-ribosylation factor-like protein 8A antibody, ADP-ribosylation factor-like protein 10B antibody, Novel small G protein indispensable for equal chromosome segregation 2 antibody

UniProt: [Q96BM9](#)

Application Details

Application Notes: ELISA:1:2000-1:5000, IHC:1:25-1:100,

Restrictions: For Research Use only

Handling

Format: Liquid

Buffer: -20 °C, pH 7.4 PBS, 0.05 % Sodium azide, 40 % Glycerol

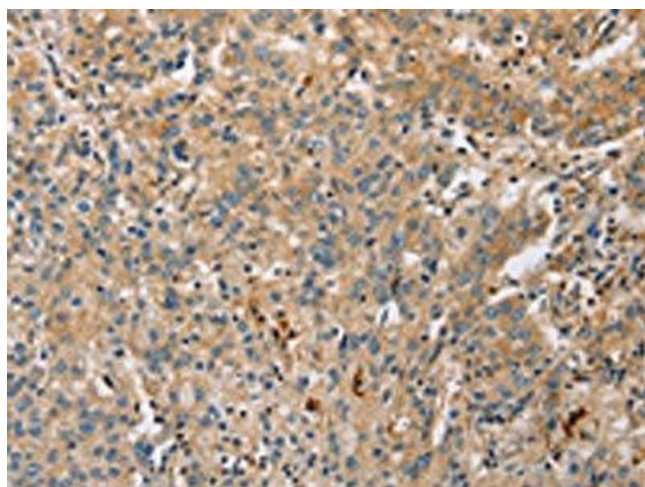
Preservative: Sodium azide

Precaution of Use: This product contains Sodium azide: a POISONOUS AND HAZARDOUS SUBSTANCE which should be handled by trained staff only.

Storage: -20 °C, -80 °C

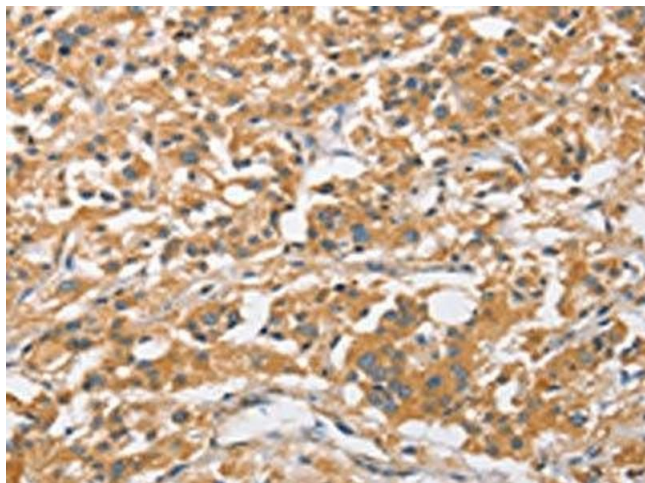
Storage Comment: Upon receipt, store at -20°C or -80°C. Avoid repeated freeze.

Images



Immunohistochemistry

Image 1. The image on the left is immunohistochemistry of paraffin-embedded Human gastric cancer tissue using ABIN7128517 (ARL8A Antibody) at dilution 1/20, on the right is treated with fusion protein. (Original magnification: x200)



Immunohistochemistry

Image 2. The image on the left is immunohistochemistry of paraffin-embedded Human thyroid cancer tissue using ABIN7128517(ARL8A Antibody) at dilution 1/20, on the right is treated with fusion protein. (Original magnification: x200)