



## Datasheet for ABIN7128532 anti-ARSF antibody



[Go to Product page](#)

### 3 Images

#### Overview

Quantity:	100 µL
Target:	ARSF
Reactivity:	Human
Host:	Rabbit
Clonality:	Polyclonal
Conjugate:	This ARSF antibody is un-conjugated
Application:	Western Blotting (WB), ELISA, Immunohistochemistry (IHC)

#### Product Details

Immunogen:	Fusion protein of Human ARSF
Isotype:	IgG
Cross-Reactivity:	Human
Purification:	Antigen affinity purification

#### Target Details

Target:	ARSF
Alternative Name:	ARSF ( <a href="#">ARSF Products</a> )
Background:	Background: This gene is a member of the sulfatase family, and more specifically, the arylsulfatase subfamily. Members of the subfamily share similarity in sequence and splice sites, and are clustered together on chromosome X, suggesting that they are derived from recent gene duplication events. Sulfatases are essential for the correct composition of bone and

## Target Details

cartilage matrix. The activity of this protein, unlike that of arylsulfatase E, is not inhibited by warfarin. Multiple alternatively spliced variants, encoding the same protein, have been identified.  
Aliases: ARSFarylsulfatase F antibody, ASF antibody, EC 3.1.6.- antibody

UniProt: [P54793](#)

## Application Details

Application Notes: ELISA:1:1000-1:2000, WB:1:200-1:1000, IHC:1:25-1:100,

Restrictions: For Research Use only

## Handling

Format: Liquid

Buffer: -20 °C, pH 7.4 PBS, 0.05 % Sodium azide, 40 % Glycerol

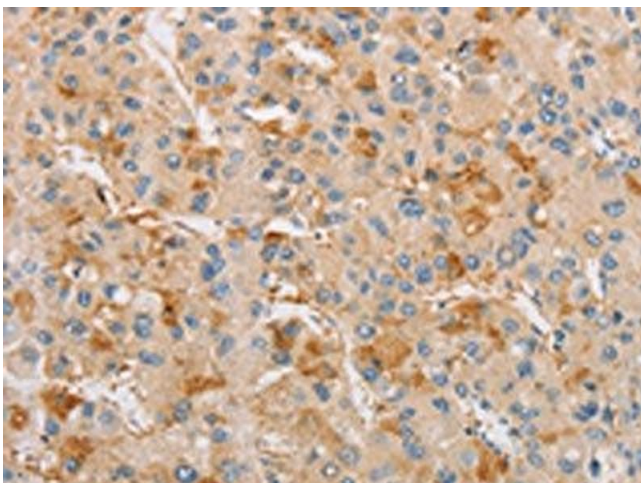
Preservative: Sodium azide

Precaution of Use: This product contains Sodium azide: a POISONOUS AND HAZARDOUS SUBSTANCE which should be handled by trained staff only.

Storage: -20 °C,-80 °C

Storage Comment: Upon receipt, store at -20°C or -80°C. Avoid repeated freeze.

## Images



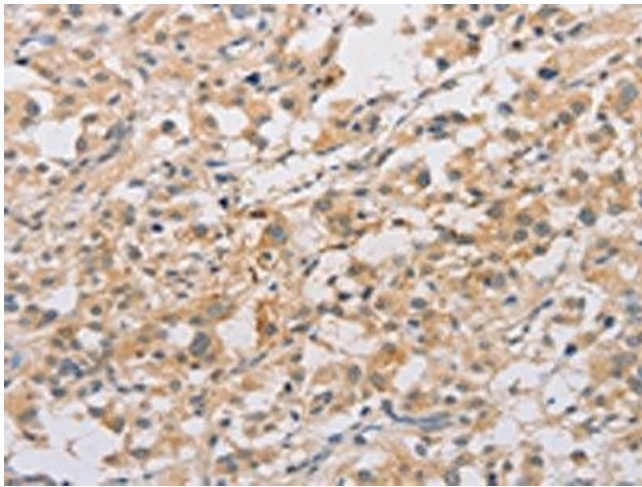
### Immunohistochemistry

**Image 1.** The image on the left is immunohistochemistry of paraffin-embedded Human liver cancer tissue using ABIN7128532(ARSF Antibody) at dilution 1/20, on the right is treated with fusion protein. (Original magnification: x200)



### Western Blotting

**Image 2.** Gel: 6 % SDS-PAGE, Lysate: 40 µg, Lane: Human placenta tissue, Primary antibody: ABIN7128532(ARSF Antibody) at dilution 1/200, Secondary antibody: Goat anti rabbit IgG at 1/8000 dilution, Exposure time: 30 seconds



### Immunohistochemistry

**Image 3.** The image on the left is immunohistochemistry of paraffin-embedded Human thyroid cancer tissue using ABIN7128532(ARSF Antibody) at dilution 1/20, on the right is treated with fusion protein. (Original magnification: x200)