

Datasheet for ABIN7128546

anti-ASB1 antibody**1** Image[Go to Product page](#)

Overview

Quantity:	100 µL
Target:	ASB1
Reactivity:	Human
Host:	Rabbit
Clonality:	Polyclonal
Conjugate:	This ASB1 antibody is un-conjugated
Application:	ELISA, Western Blotting (WB)

Product Details

Immunogen:	Fusion protein of Human ASB10
Isotype:	IgG
Cross-Reactivity:	Human, Mouse
Purification:	Antigen affinity purification

Target Details

Target:	ASB1
Alternative Name:	ASB1 (ASB1 Products)
Background:	Background: The protein encoded by this gene is a member of the ankyrin repeat and SOCS box-containing (ASB) family of proteins. The SOCS box serves to couple suppressor of cytokine signaling (SOCS) proteins and their binding partners with the elongin B and C complex, possibly targeting them for degradation. Multiple alternatively spliced transcript variants have been

Target Details

described for this gene.
Aliases: ASB10Ankyrin repeat and SOCS box protein 10 antibody, ASB-10 antibody

UniProt: [Q8WXI3](#)

Application Details

Application Notes: ELISA:1:2000-1:5000, WB:1:500-1:2000,

Restrictions: For Research Use only

Handling

Format: Liquid

Buffer: -20 °C, pH 7.4 PBS, 0.05 % Sodium azide, 40 % Glycerol

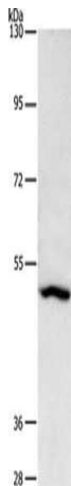
Preservative: Sodium azide

Precaution of Use: This product contains Sodium azide: a POISONOUS AND HAZARDOUS SUBSTANCE which should be handled by trained staff only.

Storage: -20 °C,-80 °C

Storage Comment: Upon receipt, store at -20°C or -80°C. Avoid repeated freeze.

Images



Western Blotting

Image 1. Gel: 8 % SDS-PAGE, Lysate: 40 µg, Lane: A431 cells, Primary antibody: ABIN7128546(ASB10 Antibody) at dilution 1/1650, Secondary antibody: Goat anti rabbit IgG at 1/8000 dilution, Exposure time: 2 minutes