



Datasheet for ABIN7128654

anti-BIN3 antibody



[Go to Product page](#)

1 Image

Overview

Quantity:	100 µL
Target:	BIN3
Reactivity:	Human
Host:	Rabbit
Clonality:	Polyclonal
Conjugate:	This BIN3 antibody is un-conjugated
Application:	Western Blotting (WB), ELISA

Product Details

Immunogen:	Fusion protein of Human BIN3
Isotype:	IgG
Cross-Reactivity:	Human, Mouse, Rat
Purification:	Antigen affinity purification

Target Details

Target:	BIN3
Alternative Name:	BIN3 (BIN3 Products)
Background:	Background: The product of this gene is a member of the BAR domain protein family. The encoded protein is comprised solely of a BAR domain which is predicted to form coiled-coil structures and proposed to mediate dimerization, sense and induce membrane curvature, and bind small GTPases. BAR domain proteins have been implicated in endocytosis, intracellular

Target Details

transport, and a diverse set of other processes

Aliases: BIN3Bridging integrator 3 antibody

UniProt: [Q9NQY0](#)

Application Details

Application Notes: ELISA:1:1000-1:2000, WB:1:200-1:1000,

Restrictions: For Research Use only

Handling

Format: Liquid

Buffer: -20 °C, pH 7.4 PBS, 0.05 % Sodium azide, 40 % Glycerol

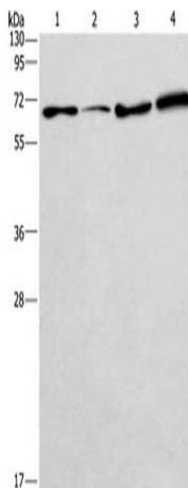
Preservative: Sodium azide

Precaution of Use: This product contains Sodium azide: a POISONOUS AND HAZARDOUS SUBSTANCE which should be handled by trained staff only.

Storage: -20 °C,-80 °C

Storage Comment: Upon receipt, store at -20°C or -80°C. Avoid repeated freeze.

Images



Western Blotting

Image 1. Gel: 12 % SDS-PAGE, Lysate: 40 µg, Lane 1-4: 231 cells, A549 cells, LoVo cells, HepG2 cells, Primary antibody: ABIN7128654(BIN3 Antibody) at dilution 1/225, Secondary antibody: Goat anti rabbit IgG at 1/8000 dilution, Exposure time: 2 minutes