

Datasheet for ABIN7128752

anti-Calpain 7 antibody

3 Images

[Go to Product page](#)

Overview

Quantity:	100 µL
Target:	Calpain 7 (CAPN7)
Reactivity:	Human
Host:	Rabbit
Clonality:	Polyclonal
Conjugate:	This Calpain 7 antibody is un-conjugated
Application:	Western Blotting (WB), ELISA, Immunohistochemistry (IHC)

Product Details

Immunogen:	Fusion protein of Human CAPN7
Isotype:	IgG
Cross-Reactivity:	Human, Mouse
Purification:	Antigen affinity purification

Target Details

Target:	Calpain 7 (CAPN7)
Alternative Name:	CAPN7 (CAPN7 Products)
Background:	Background: Calpains are ubiquitous, well-conserved family of calcium-dependent, cysteine proteases. The calpain proteins are heterodimers consisting of an invariant small subunit and variable large subunits. The large subunit possesses a cysteine protease domain, and both subunits possess calcium-binding domains. Calpains have been implicated in

Target Details

neurodegenerative processes, as their activation can be triggered by calcium influx and oxidative stress. The function of the protein encoded by this gene is not known. An orthologue has been found in mouse but it seems to diverge from other family members. The mouse orthologue is thought to be calcium independent with protease activity.

Aliases: CAPN7 antibody, PALBHCaipain-7 antibody, EC 3.4.22.- antibody, PalB homolog antibody, PalBH antibody

UniProt: [Q9Y6W3](#)

Application Details

Application Notes: ELISA:1:2000-1:5000, WB:1:500-1:2000, IHC:1:25-1:100,

Restrictions: For Research Use only

Handling

Format: Liquid

Buffer: -20 °C, pH 7.4 PBS, 0.05 % Sodium azide, 40 % Glycerol

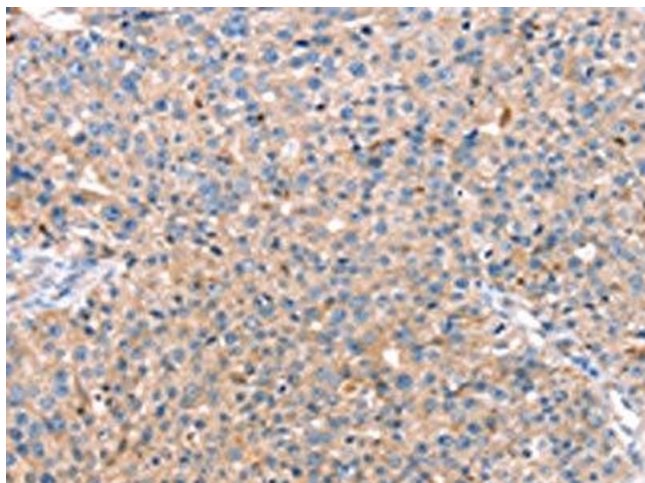
Preservative: Sodium azide

Precaution of Use: This product contains Sodium azide: a POISONOUS AND HAZARDOUS SUBSTANCE which should be handled by trained staff only.

Storage: -20 °C,-80 °C

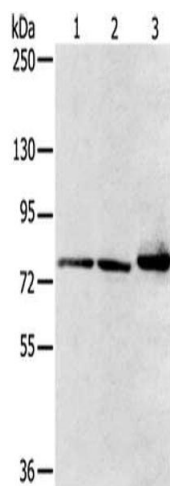
Storage Comment: Upon receipt, store at -20°C or -80°C. Avoid repeated freeze.

Images



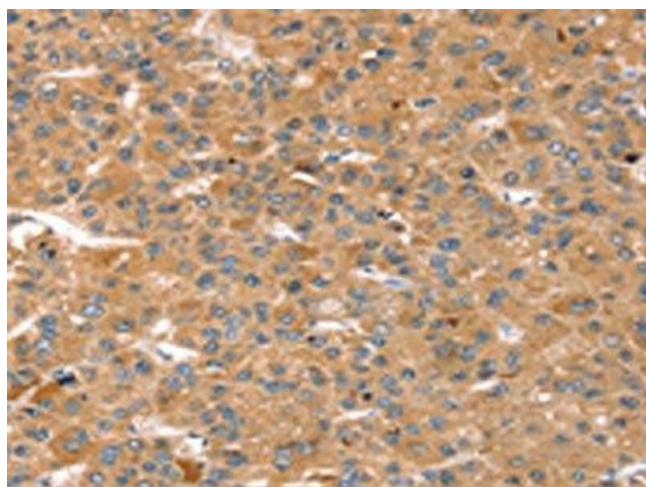
Immunohistochemistry

Image 1. The image on the left is immunohistochemistry of paraffin-embedded Human breast cancer tissue using ABIN7128752(CAPN7 Antibody) at dilution 1/20, on the right is treated with fusion protein. (Original magnification: x200)



Western Blotting

Image 2. Gel: 6 % SDS-PAGE, Lysate: 40 µg, Lane 1-3: Mouse heart tissue, HT29 cells, mouse liver tissue, Primary antibody: ABIN7128752(CAPN7 Antibody) at dilution 1/300, Secondary antibody: Goat anti rabbit IgG at 1/8000 dilution, Exposure time: 1 second



Immunohistochemistry

Image 3. The image on the left is immunohistochemistry of paraffin-embedded Human liver cancer tissue using ABIN7128752(CAPN7 Antibody) at dilution 1/20, on the right is treated with fusion protein. (Original magnification: x200)