

Datasheet for ABIN7128906

anti-CENPJ antibody[Go to Product page](#)**1** Image

Overview

Quantity:	100 µL
Target:	CENPJ
Reactivity:	Human
Host:	Rabbit
Clonality:	Polyclonal
Conjugate:	This CENPJ antibody is un-conjugated
Application:	ELISA, Immunohistochemistry (IHC)

Product Details

Immunogen:	Fusion protein of Human CENPJ
Isotype:	IgG
Cross-Reactivity:	Human, Mouse
Purification:	Antigen affinity purification

Target Details

Target:	CENPJ
Alternative Name:	CENPJ (CENPJ Products)
Background:	<p>Background: This gene encodes a protein that belongs to the centromere protein family. During cell division, this protein plays a structural role in the maintenance of centrosome integrity and normal spindle morphology, and it is involved in microtubule disassembly at the centrosome.</p> <p>This protein can function as a transcriptional coactivator in the Stat5 signaling pathway, and</p>

Target Details

also as a coactivator of NF-kappaB-mediated transcription, likely via its interaction with the coactivator p300/CREB-binding protein.

Aliases: BM032 antibody, CENP-J antibody, CENPJ antibody, CENPJ_HUMAN antibody, Centromere protein J antibody, Centrosomal P4.1-associated protein antibody, CPAP antibody, LAG-3-associated protein antibody, LAP antibody, LIP1 antibody, LYST interacting protein LIP1 antibody, LYST interacting protein LIP7 antibody, LYST-interacting protein 1 antibody, MCPH6 antibody, Sas 4 antibody, SASS4 antibody, SCKL4 antibody

UniProt: [Q9HC77](#)

Pathways: [M Phase](#)

Application Details

Application Notes: ELISA:1:1000-1:2000, IHC:1:25-1:100,

Restrictions: For Research Use only

Handling

Format: Liquid

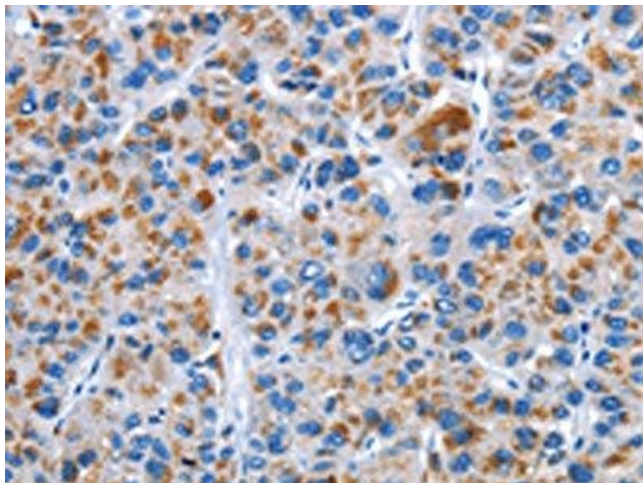
Buffer: -20 °C, pH 7.4 PBS, 0.05 % Sodium azide, 40 % Glycerol

Preservative: Sodium azide

Precaution of Use: This product contains Sodium azide: a POISONOUS AND HAZARDOUS SUBSTANCE which should be handled by trained staff only.

Storage: -20 °C,-80 °C

Storage Comment: Upon receipt, store at -20°C or -80°C. Avoid repeated freeze.



Immunohistochemistry

Image 1. The image on the left is immunohistochemistry of paraffin-embedded Human liver cancer tissue using ABIN7128906(CENPJ Antibody) at dilution 1/40, on the right is treated with fusion protein. (Original magnification: x200)