

Datasheet for ABIN7128907

anti-CENPN antibody**2** Images[Go to Product page](#)

Overview

Quantity:	100 µL
Target:	CENPN
Reactivity:	Human
Host:	Rabbit
Clonality:	Polyclonal
Conjugate:	This CENPN antibody is un-conjugated
Application:	ELISA, Immunohistochemistry (IHC)

Product Details

Immunogen:	Fusion protein of Human CENPN
Isotype:	IgG
Cross-Reactivity:	Human
Purification:	Antigen affinity purification

Target Details

Target:	CENPN
Alternative Name:	CENPN (CENPN Products)
Background:	Background: The protein encoded by this gene forms part of the nucleosome-associated complex and is important for kinetochore assembly. It is bound to kinetochores during S phase and G2 and recruits other proteins to the centromere. Pseudogenes of this gene are located on chromosome 2. Alternative splicing results in multiple transcript variants that encode different

Target Details

protein isoforms.

Aliases: CENPN antibody, C16orf60 antibody, ICEN32 antibody, BM-309Centromere protein N antibody, CENP-N antibody, Interphase centromere complex protein 32 antibody

UniProt: [Q96H22](#)

Application Details

Application Notes: ELISA:1:2000-1:10000, IHC:1:100-1:300,

Restrictions: For Research Use only

Handling

Format: Liquid

Buffer: -20 °C, pH 7.4 PBS, 0.05 % Sodium azide, 40 % Glycerol

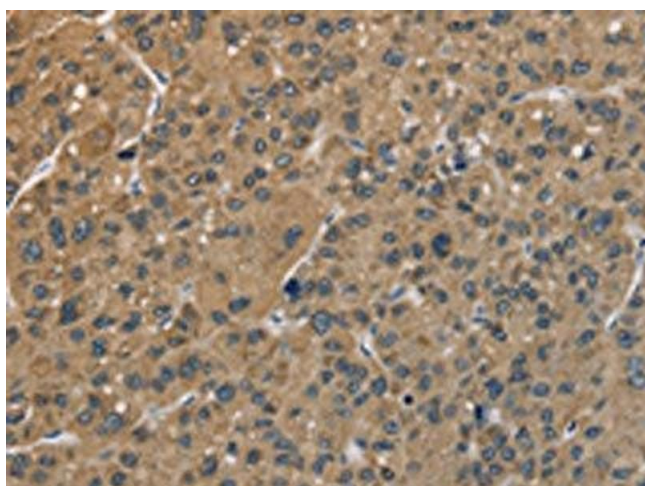
Preservative: Sodium azide

Precaution of Use: This product contains Sodium azide: a POISONOUS AND HAZARDOUS SUBSTANCE which should be handled by trained staff only.

Storage: -20 °C,-80 °C

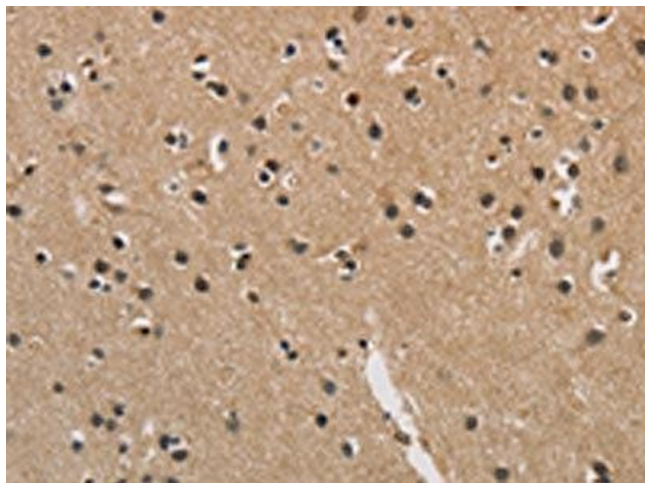
Storage Comment: Upon receipt, store at -20°C or -80°C. Avoid repeated freeze.

Images



Immunohistochemistry

Image 1. The image is immunohistochemistry of paraffin-embedded Human liver cancer tissue using ABIN7128907(CENPN Antibody) at dilution 1/70. (Original magnification: x200)



Immunohistochemistry

Image 2. The image is immunohistochemistry of paraffin-embedded Human brain tissue using ABIN7128907(CENPN Antibody) at dilution 1/70. (Original magnification: x200)