

Datasheet for ABIN7128952

anti-CLCA4 antibody**2** Images[Go to Product page](#)

Overview

Quantity:	100 µL
Target:	CLCA4
Reactivity:	Human
Host:	Rabbit
Clonality:	Polyclonal
Conjugate:	This CLCA4 antibody is un-conjugated
Application:	ELISA, Immunohistochemistry (IHC), Western Blotting (WB)

Product Details

Immunogen:	Fusion protein of Human CLCA4
Isotype:	IgG
Cross-Reactivity:	Human
Purification:	Antigen affinity purification

Target Details

Target:	CLCA4
Alternative Name:	CLCA4 (CLCA4 Products)
Background:	Background: The protein encoded by this gene belongs to the calcium sensitive chloride conductance protein family. To date, all members of this gene family map to the same site on chromosome 1p31-p22 and share high degrees of homology in size, sequence and predicted structure, but differ significantly in their tissue distributions. Alternative splicing results in

Target Details

multiple transcript variants, only one of which is thought to be protein coding.

Aliases: 30 kDa form antibody, CaCC-2 antibody, Calcium-activated chloride channel family member 4 antibody, Calcium-activated chloride channel protein 2 antibody, Calcium-activated chloride channel regulator 4 antibody, Clca4 antibody, CLCA4_HUMAN antibody, hCaCC-2 antibody, hCLCA4 antibody

UniProt: [Q14CN2](#)

Application Details

Application Notes: ELISA:1:500-1:2000, WB:1:100-1:500, IHC:1:10-1:50,

Restrictions: For Research Use only

Handling

Format: Liquid

Buffer: -20 °C, pH 7.4 PBS, 0.05 % Sodium azide, 40 % Glycerol

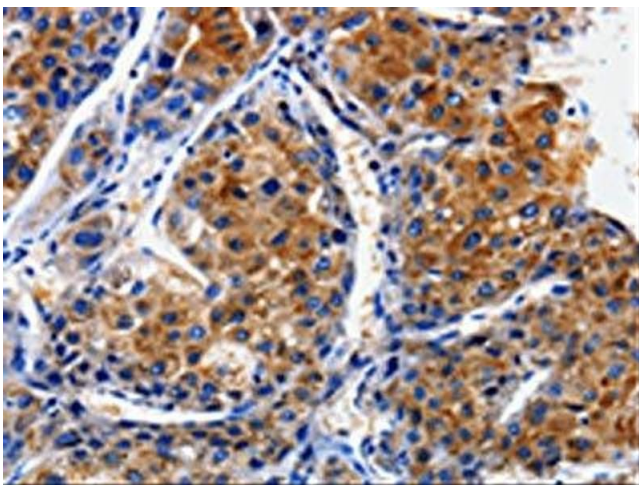
Preservative: Sodium azide

Precaution of Use: This product contains Sodium azide: a POISONOUS AND HAZARDOUS SUBSTANCE which should be handled by trained staff only.

Storage: -20 °C,-80 °C

Storage Comment: Upon receipt, store at -20°C or -80°C. Avoid repeated freeze.

Images



Immunohistochemistry

Image 1. The image on the left is immunohistochemistry of paraffin-embedded Human liver cancer tissue using ABIN7128952(CLCA4 Antibody) at dilution 1/10, on the right is treated with fusion protein. (Original magnification: x200)



Western Blotting

Image 2. Gel: 8 % SDS-PAGE, Lysate: 40 µg, Lane: 293T cells, Primary antibody: ABIN7128952(CLCA4 Antibody) at dilution 1/200, Secondary antibody: Goat anti rabbit IgG at 1/8000 dilution, Exposure time: 30 seconds