

Datasheet for ABIN7128956
anti-CLDND1 antibody



[Go to Product page](#)

3 Images

Overview

Quantity:	100 µL
Target:	CLDND1
Reactivity:	Human
Host:	Rabbit
Clonality:	Polyclonal
Conjugate:	This CLDND1 antibody is un-conjugated
Application:	ELISA, Western Blotting (WB), Immunohistochemistry (IHC)

Product Details

Immunogen:	Fusion protein of Human CLDND1
Isotype:	IgG
Cross-Reactivity:	Human, Mouse
Purification:	Antigen affinity purification

Target Details

Target:	CLDND1
Alternative Name:	CLDND1 (CLDND1 Products)
Background:	Background: CLDND1 (claudin domain containing 1), also known as C3orf4 or HSPC174, is a 253 amino acid multi-pass membrane protein that is expressed at high levels in adult brain and at lower levels in adult heart. Existing as two alternatively spliced isoforms, CLDND1 is encoded by a gene that maps to human chromosome 3, which houses over 1,100 genes, including a

Target Details

chemokine receptor (CKR) gene cluster and a variety of human cancer-related gene loci. Key tumor suppressing genes on chromosome 3 include those that encode the apoptosis mediator RASSF1, the cell migration regulator HYAL1 and the angiogenesis suppressor SEMA3B. Marfan Syndrome, porphyria, von Hippel-Lindau syndrome, osteogenesis imperfecta and Charcot-Marie-Tooth Disease are a few of the numerous genetic diseases associated with chromosome 3.

Aliases: CLDND1 antibody, C3orf4 antibody, HSPC174 antibody, PSEC0054 antibody, UNQ2511/PRO6000Claudin domain-containing protein 1 antibody, Membrane protein GENX-3745 antibody

UniProt: [Q9NY35](#)

Application Details

Application Notes: ELISA:1:2000-1:5000, WB:1:200-1:1000, IHC:1:50-1:200,

Restrictions: For Research Use only

Handling

Format: Liquid

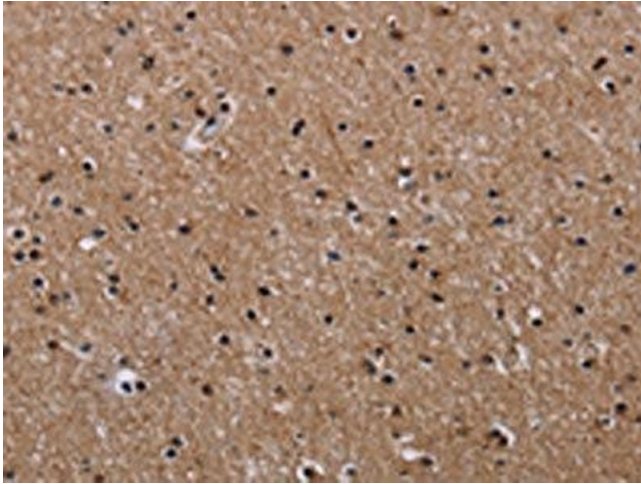
Buffer: -20 °C, pH 7.4 PBS, 0.05 % Sodium azide, 40 % Glycerol

Preservative: Sodium azide

Precaution of Use: This product contains Sodium azide: a POISONOUS AND HAZARDOUS SUBSTANCE which should be handled by trained staff only.

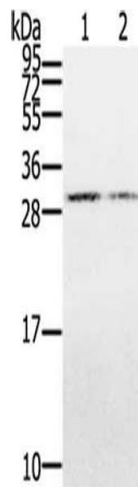
Storage: -20 °C,-80 °C

Storage Comment: Upon receipt, store at -20°C or -80°C. Avoid repeated freeze.



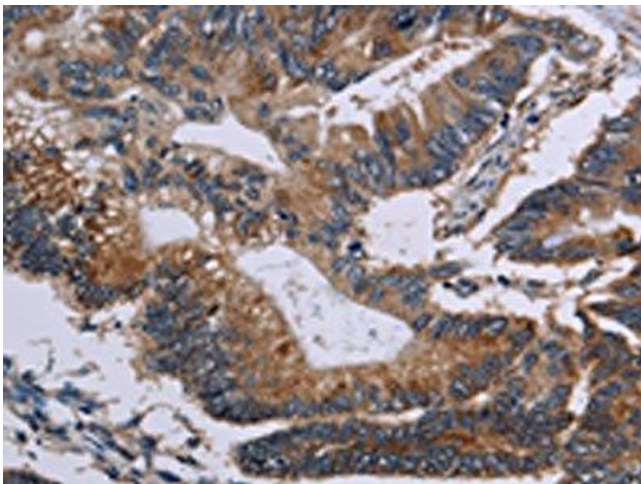
Immunohistochemistry

Image 1. The image on the left is immunohistochemistry of paraffin-embedded Human brain tissue using ABIN7128956(CLDND1 Antibody) at dilution 1/50, on the right is treated with fusion protein. (Original magnification: x200)



Western Blotting

Image 2. Gel: 12 % SDS-PAGE, Lysate: 40 µg, Lane 1-2: Hepg2 cells, K562 cells, Primary antibody: ABIN7128956(CLDND1 Antibody) at dilution 1/500, Secondary antibody: Goat anti rabbit IgG at 1/8000 dilution, Exposure time: 3 minutes



Immunohistochemistry

Image 3. The image on the left is immunohistochemistry of paraffin-embedded Human colon cancer tissue using ABIN7128956(CLDND1 Antibody) at dilution 1/50, on the right is treated with fusion protein. (Original magnification: x200)