

Datasheet for ABIN7128970

**anti-CLIP1 antibody**

## 2 Images

[Go to Product page](#)

## Overview

Quantity:	100 µL
Target:	CLIP1
Reactivity:	Human
Host:	Rabbit
Clonality:	Polyclonal
Conjugate:	This CLIP1 antibody is un-conjugated
Application:	ELISA, Immunohistochemistry (IHC)

## Product Details

Immunogen:	Fusion protein of Human CLIP1
Isotype:	IgG
Cross-Reactivity:	Human, Mouse
Purification:	Antigen affinity purification

## Target Details

Target:	CLIP1
Alternative Name:	CLIP1 ( <a href="#">CLIP1 Products</a> )
Background:	Background: The protein encoded by this gene links endocytic vesicles to microtubules. This gene is highly expressed in Reed-Sternberg cells of Hodgkin disease. Several transcript variants encoding different isoforms have been found for this gene. Binds to the plus end of microtubules and regulates the dynamics of the microtubule cytoskeleton. Promotes

## Target Details

microtubule growth and microtubule bundling. Links cytoplasmic vesicles to microtubules and thereby plays an important role in intracellular vesicle trafficking. Plays a role macropinocytosis and endosome trafficking.

Aliases: CAP GLY domain containing linker protein 1 antibody, CAP-Gly domain-containing linker protein 1 antibody, CLIP 170 antibody, CLIP antibody, CLIP-170 antibody, CLIP1 antibody, CLIP1\_HUMAN antibody, CYLN1 antibody, cytoplasmic linker 1 antibody, Cytoplasmic linker protein 1 antibody, Cytoplasmic linker protein 170 alpha 2 antibody, Cytoplasmic linker protein 170 alpha-2 antibody, Cytoplasmic linker protein CLIP 170 antibody, Reed Steinberg cell expressed intermediate filament associated antibody, Reed Sternberg intermediate filament associated protein 3 antibody, Reed-Sternberg intermediate filament-associated protein antibody, Restin antibody, RSN antibody

UniProt: [P30622](#)

Pathways: [Microtubule Dynamics](#)

## Application Details

Application Notes: ELISA:1:1000-1:2000, IHC:1:25-1:100,

Restrictions: For Research Use only

## Handling

Format: Liquid

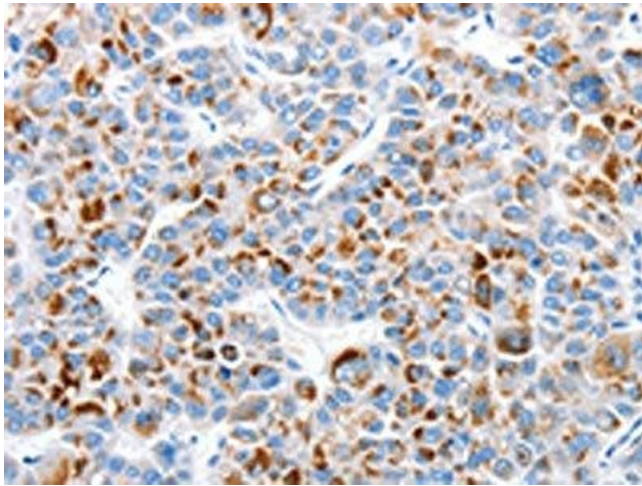
Buffer: -20 °C, pH 7.4 PBS, 0.05 % Sodium azide, 40 % Glycerol

Preservative: Sodium azide

Precaution of Use: This product contains Sodium azide: a POISONOUS AND HAZARDOUS SUBSTANCE which should be handled by trained staff only.

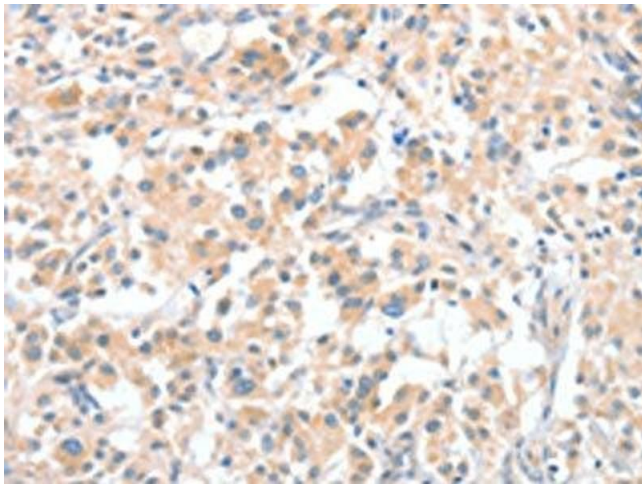
Storage: -20 °C,-80 °C

Storage Comment: Upon receipt, store at -20°C or -80°C. Avoid repeated freeze.



#### Immunohistochemistry

**Image 1.** The image on the left is immunohistochemistry of paraffin-embedded Human liver cancer tissue using ABIN7128970(CLIP1 Antibody) at dilution 1/30, on the right is treated with fusion protein. (Original magnification: x200)



#### Immunohistochemistry

**Image 2.** The image on the left is immunohistochemistry of paraffin-embedded Human thyroid cancer tissue using ABIN7128970(CLIP1 Antibody) at dilution 1/30, on the right is treated with fusion protein. (Original magnification: x200)