

## Datasheet for ABIN7129016

**anti-COX6B2 antibody**

## 3 Images

[Go to Product page](#)

## Overview

Quantity:	100 µL
Target:	COX6B2
Reactivity:	Human
Host:	Rabbit
Clonality:	Polyclonal
Conjugate:	This COX6B2 antibody is un-conjugated
Application:	Western Blotting (WB), ELISA, Immunohistochemistry (IHC)

## Product Details

Immunogen:	Fusion protein of Human COX6B2
Isotype:	IgG
Cross-Reactivity:	Human, Mouse
Purification:	Antigen affinity purification

## Target Details

Target:	COX6B2
Alternative Name:	COX6B2 ( <a href="#">COX6B2 Products</a> )
Background:	Background: The cytochrome c oxidase (COX) family of proteins function as the final electron donor in the respiratory chain to drive a proton gradient across the inner mitochondrial membrane, ultimately resulting in the production of water. The mammalian COX apoenzyme is a dimer, with each monomer consisting of 13 subunits, some of which are mitochondrial and

## Target Details

some of which are nuclear. Localized to the intermembrane space, COX6b2 (Cytochrome c oxidase subunit 6B2), also known as Cytochrome c oxidase subunit VIb isoform 2 and Cancer/testis antigen 59, is a 88 amino acid mitochondrial protein that is responsible for joining the two COX monomers to form the COX dimer. COX6b2 is specifically expressed in testis and is found to be upregulated in certain cancer cell lines.

Aliases: COX6B2Cytochrome c oxidase subunit 6B2 antibody, Cancer/testis antigen 59 antibody, CT59 antibody, Cytochrome c oxidase subunit VIb isoform 2 antibody, COX VIb-2 antibody, Cytochrome c oxidase subunit VIb antibody, testis-specific isoform antibody

UniProt: [Q6YFQ2](#)

## Application Details

Application Notes: ELISA:1:2000-1:5000, WB:1:500-1:2000, IHC:1:50-1:200,

Restrictions: For Research Use only

## Handling

Format: Liquid

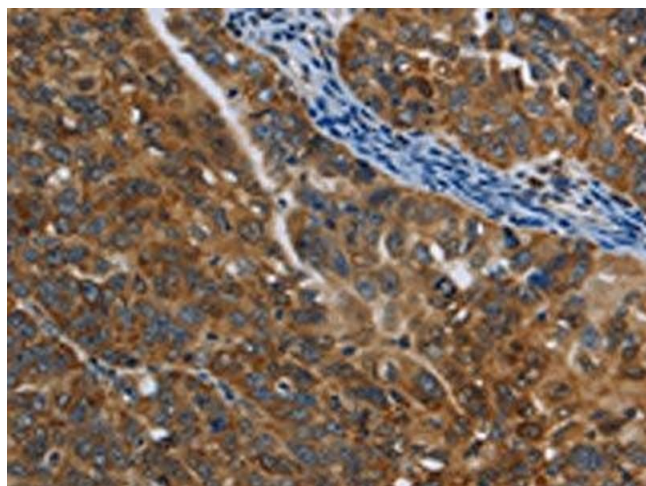
Buffer: -20 °C, pH 7.4 PBS, 0.05 % Sodium azide, 40 % Glycerol

Preservative: Sodium azide

Precaution of Use: This product contains Sodium azide: a POISONOUS AND HAZARDOUS SUBSTANCE which should be handled by trained staff only.

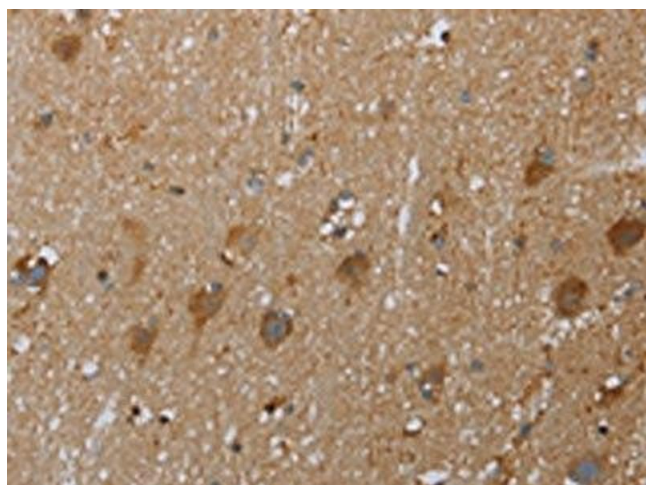
Storage: -20 °C,-80 °C

Storage Comment: Upon receipt, store at -20°C or -80°C. Avoid repeated freeze.



#### Immunohistochemistry

**Image 1.** The image on the left is immunohistochemistry of paraffin-embedded Human ovarian cancer tissue using ABIN7129016(COX6B2 Antibody) at dilution 1/50, on the right is treated with fusion protein. (Original magnification: x200)



#### Immunohistochemistry

**Image 2.** The image on the left is immunohistochemistry of paraffin-embedded Human brain tissue using ABIN7129016(COX6B2 Antibody) at dilution 1/50, on the right is treated with fusion protein. (Original magnification: x200)



#### Western Blotting

**Image 3.** Gel: 10 % SDS-PAGE, Lysate: 40 µg, Lane: A549 cells, Primary antibody: ABIN7129016(COX6B2 Antibody) at dilution 1/500, Secondary antibody: Goat anti rabbit IgG at 1/8000 dilution, Exposure time: 5 seconds