

Datasheet for ABIN7129127

anti-CYP1B1 antibody

2 Images

[Go to Product page](#)

Overview

Quantity:	100 µL
Target:	CYP1B1
Reactivity:	Human
Host:	Rabbit
Clonality:	Polyclonal
Conjugate:	This CYP1B1 antibody is un-conjugated
Application:	ELISA, Immunohistochemistry (IHC)

Product Details

Immunogen:	Fusion protein of Human CYP1B1
Isotype:	IgG
Cross-Reactivity:	Human, Mouse, Rat
Purification:	Antigen affinity purification

Target Details

Target:	CYP1B1
Alternative Name:	CYP1B1 (CYP1B1 Products)
Background:	<p>Background: This gene encodes a member of the cytochrome P450 superfamily of enzymes. The cytochrome P450 proteins are monooxygenases which catalyze many reactions involved in drug metabolism and synthesis of cholesterol, steroids and other lipids. The enzyme encoded by this gene localizes to the endoplasmic reticulum and metabolizes procarcinogens</p>

Target Details

such as polycyclic aromatic hydrocarbons and 17 β -estradiol. Mutations in this gene have been associated with primary congenital glaucoma, therefore it is thought that the enzyme also metabolizes a signaling molecule involved in eye development, possibly a steroid.

Aliases: Aryl hydrocarbon hydroxylase antibody, CP1B antibody, CP1B1_HUMAN antibody, Cyp1b1 antibody, CYP1B1 antibody, Cytochrome P450 1B1 antibody, Cytochrome P450 family 1 subfamily B polypeptide 1 antibody, Cytochrome P450 subfamily I (dioxin inducible) polypeptide 1 (glaucoma 3 primary infantile) antibody, Flavoprotein linked monooxygenase antibody, GLC3A antibody, Microsomal monooxygenase antibody, P4501B1 antibody, Xenobiotic monooxygenase antibody

UniProt: [Q16678](#)

Pathways: [Steroid Hormone Biosynthesis](#)

Application Details

Application Notes: ELISA:1:2000-1:5000, IHC:1:25-1:100,

Restrictions: For Research Use only

Handling

Format: Liquid

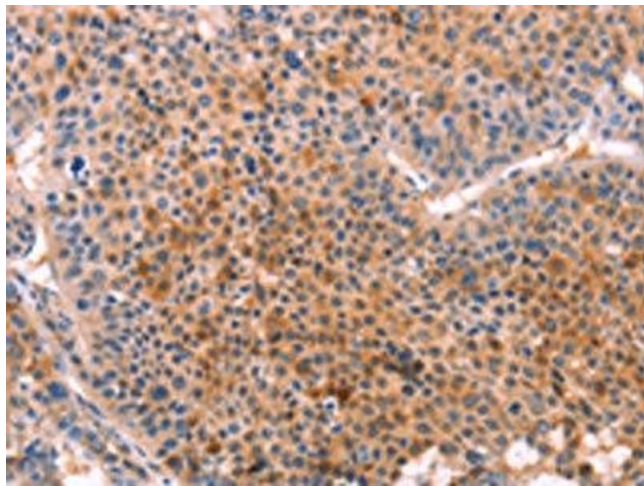
Buffer: -20 °C, pH 7.4 PBS, 0.05 % Sodium azide, 40 % Glycerol

Preservative: Sodium azide

Precaution of Use: This product contains Sodium azide: a POISONOUS AND HAZARDOUS SUBSTANCE which should be handled by trained staff only.

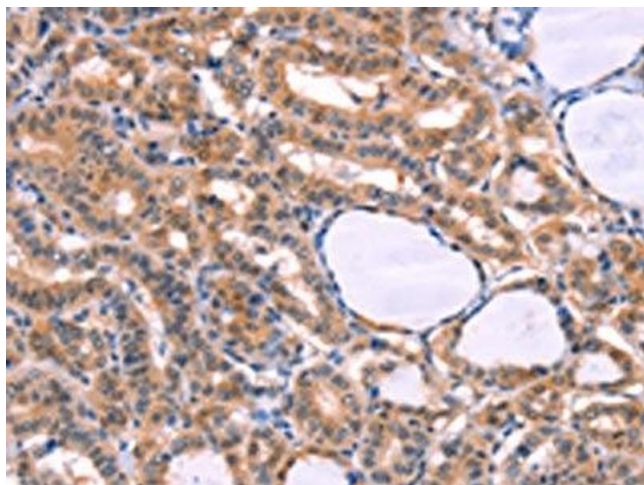
Storage: -20 °C, -80 °C

Storage Comment: Upon receipt, store at -20°C or -80°C. Avoid repeated freeze.



Immunohistochemistry

Image 1. The image on the left is immunohistochemistry of paraffin-embedded Human liver cancer tissue using ABIN7129127(CYP1B1 Antibody) at dilution 1/20, on the right is treated with fusion protein. (Original magnification: x200)



Immunohistochemistry

Image 2. The image on the left is immunohistochemistry of paraffin-embedded Human thyroid cancer tissue using ABIN7129127(CYP1B1 Antibody) at dilution 1/20, on the right is treated with fusion protein. (Original magnification: x200)