



Datasheet for ABIN7129587

anti-GDF3 antibody

3 Images



[Go to Product page](#)

Overview

Quantity:	100 µL
Target:	GDF3
Reactivity:	Human
Host:	Rabbit
Clonality:	Polyclonal
Conjugate:	This GDF3 antibody is un-conjugated
Application:	Western Blotting (WB), Immunohistochemistry (IHC), ELISA

Product Details

Immunogen:	Fusion protein of Human GDF3
Isotype:	IgG
Cross-Reactivity:	Human, Mouse
Purification:	Antigen affinity purification

Target Details

Target:	GDF3
Alternative Name:	GDF3 (GDF3 Products)
Background:	Background: The protein encoded by this gene is a member of the bone morphogenetic protein (BMP) family and the TGF-beta superfamily. This group of proteins is characterized by a polybasic proteolytic processing site which is cleaved to produce a mature protein containing seven conserved cysteine residues. The members of this family are regulators of cell growth

Target Details

and differentiation in both embryonic and adult tissues.

Aliases: C78318 antibody, ecat9 antibody, GDF 3 antibody, GDF-3 antibody, GDF3 antibody, GDF3_HUMAN antibody, Growth differentiation factor 3 antibody, Growth/differentiation factor 3 antibody, KFS3 antibody, MCOP7 antibody, MCOPCB6 antibody, MGC123990 antibody, MGC123991 antibody, RGD1564178 antibody, Vgr 2 antibody, Vgr2 antibody

UniProt: [Q9NR23](#)

Application Details

Application Notes: ELISA:1:1000-1:2000, WB:1:200-1:1000, IHC:1:25-1:100,

Restrictions: For Research Use only

Handling

Format: Liquid

Buffer: -20 °C, pH 7.4 PBS, 0.05 % Sodium azide, 40 % Glycerol

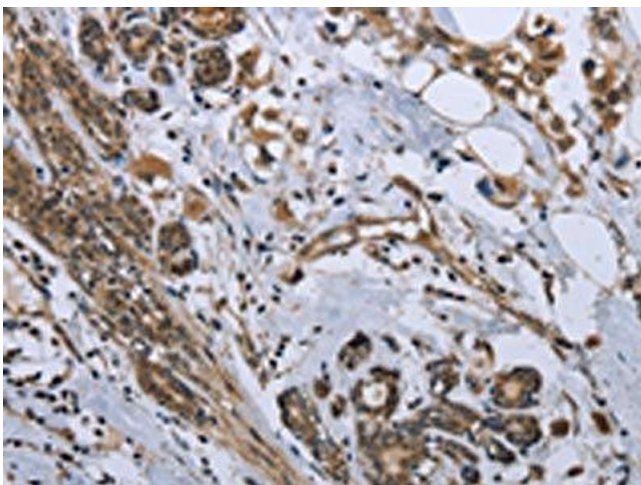
Preservative: Sodium azide

Precaution of Use: This product contains Sodium azide: a POISONOUS AND HAZARDOUS SUBSTANCE which should be handled by trained staff only.

Storage: -20 °C,-80 °C

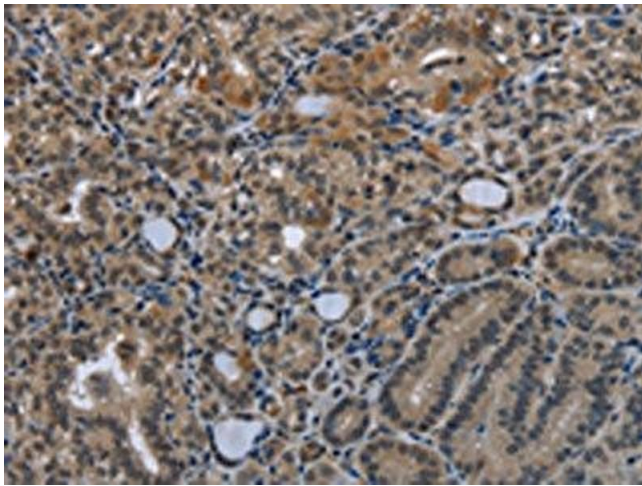
Storage Comment: Upon receipt, store at -20°C or -80°C. Avoid repeated freeze.

Images



Immunohistochemistry

Image 1. The image on the left is immunohistochemistry of paraffin-embedded Human breast cancer tissue using ABIN7129587(GDF3 Antibody) at dilution 1/25, on the right is treated with fusion protein. (Original magnification: x200)



Immunohistochemistry

Image 2. The image on the left is immunohistochemistry of paraffin-embedded Human thyroid cancer tissue using ABIN7129587(GDF3 Antibody) at dilution 1/25, on the right is treated with fusion protein. (Original magnification: x200)



Western Blotting

Image 3. Gel: 6 % SDS-PAGE, Lysate: 40 µg, Lane: Mouse kidney tissue, Primary antibody: ABIN7129587(GDF3 Antibody) at dilution 1/250, Secondary antibody: Goat anti rabbit IgG at 1/8000 dilution, Exposure time: 1 minute