



## Datasheet for ABIN7129668 anti-GTPBP1 antibody



[Go to Product page](#)

### 1 Image

#### Overview

Quantity:	100 µL
Target:	GTPBP1
Reactivity:	Human
Host:	Rabbit
Clonality:	Polyclonal
Conjugate:	This GTPBP1 antibody is un-conjugated
Application:	Western Blotting (WB), ELISA

#### Product Details

Immunogen:	Fusion protein of Human GTPBP10
Isotype:	IgG
Cross-Reactivity:	Human
Purification:	Antigen affinity purification

#### Target Details

Target:	GTPBP1
Alternative Name:	GTPBP1 ( <a href="#">GTPBP1 Products</a> )
Background:	Background: Small G proteins, such as GTPBP10, act as molecular switches that play crucial roles in the regulation of fundamental cellular processes such as protein synthesis, nuclear transport, membrane trafficking, and signal transduction Aliases: GTPBP10 antibody, OBGH2 antibody, UG0751c10GTP-binding protein 10 antibody,

## Target Details

Protein obg homolog 2 antibody, ObgH2 antibody

UniProt: [A4D1E9](#)

## Application Details

Application Notes: ELISA:1:1000-1:2000, WB:1:200-1:1000,

Restrictions: For Research Use only

## Handling

Format: Liquid

Buffer: -20 °C, pH 7.4 PBS, 0.05 % Sodium azide, 40 % Glycerol

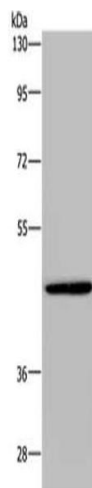
Preservative: Sodium azide

Precaution of Use: This product contains Sodium azide: a POISONOUS AND HAZARDOUS SUBSTANCE which should be handled by trained staff only.

Storage: -20 °C,-80 °C

Storage Comment: Upon receipt, store at -20°C or -80°C. Avoid repeated freeze.

## Images



### Western Blotting

**Image 1.** Gel: 8 % SDS-PAGE, Lysate: 40 µg, Lane: A549 cells, Primary antibody: ABIN7129668(GTPBP10 Antibody) at dilution 1/200, Secondary antibody: Goat anti rabbit IgG at 1/8000 dilution, Exposure time: 10 minutes