

Datasheet for ABIN7129823

anti-IGSF6 antibody**1** Image[Go to Product page](#)

Overview

Quantity:	100 µL
Target:	IGSF6
Reactivity:	Human
Host:	Rabbit
Clonality:	Polyclonal
Conjugate:	This IGSF6 antibody is un-conjugated
Application:	ELISA, Immunohistochemistry (IHC)

Product Details

Immunogen:	Fusion protein of Human IGSF6
Isotype:	IgG
Cross-Reactivity:	Human
Purification:	Antigen affinity purification

Target Details

Target:	IGSF6
Alternative Name:	IGSF6 (IGSF6 Products)
Background:	Background: IGSF6 (DORA), a novel member of the immunoglobulin superfamily (IGSF) from human and rat expressed in dendritic and myeloid cells. Using a probe from the open reading frame of the rat cDNA, we isolated a cosmid which contains the entire mouse gene. By comparative analysis and reverse transcriptase polymerase chain reaction, we defined the

Target Details

intron/exon structure and the mRNA of the mouse gene and, with respect to human BAC clones, the human gene. The genes span 10 kb (mouse) and 12 kb (human), with six exons arranged in a manner similar to other members of the IGSF. All intron/exon boundaries follow the GT-AG rule. Expression of the mouse Igsf6 gene is restricted to cells of the immune system, particularly macrophages. Northern blot revealed a single mRNA of 2.5 kb, in contrast to the human gene which is expressed as two mRNAs of 1 and 2.5 kb. The human and mouse genes were localized to a locus associated with inflammatory bowel disease. Analysis of the flanking regions of the Igsf6 gene revealed the presence of an unrelated gene, transcribed from the opposite strand of the DNA and oriented such that the Igsf6 gene is encoded entirely within an intron. An identical organization is seen in human.

Aliases: Downregulated by activation gene antibody, DORA antibody, Down regulated by activation (immunoglobulin superfamily) antibody, IgSF6 antibody, IGSF6_HUMAN antibody, Immunoglobulin superfamily member 6 antibody, Protein DORA antibody

UniProt: [O95976](#)

Application Details

Application Notes: ELISA:1:1000-1:5000, IHC:1:5-1:20,

Restrictions: For Research Use only

Handling

Format: Liquid

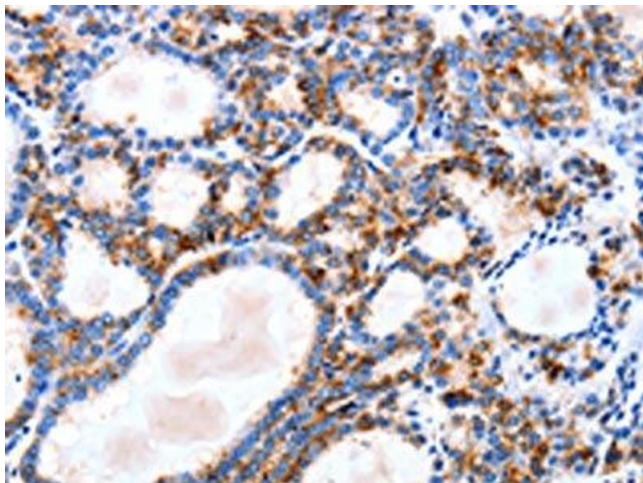
Buffer: -20 °C, pH 7.4 PBS, 0.05 % Sodium azide, 40 % Glycerol

Preservative: Sodium azide

Precaution of Use: This product contains Sodium azide: a POISONOUS AND HAZARDOUS SUBSTANCE which should be handled by trained staff only.

Storage: -20 °C, -80 °C

Storage Comment: Upon receipt, store at -20°C or -80°C. Avoid repeated freeze.



Immunohistochemistry

Image 1. The image on the left is immunohistochemistry of paraffin-embedded Human thyroid cancer tissue using ABIN7129823(IGSF6 Antibody) at dilution 1/10, on the right is treated with fusion protein. (Original magnification: x200)