

Datasheet for ABIN7129824

**anti-IGSF8 antibody****2** Images[Go to Product page](#)

## Overview

Quantity:	100 µL
Target:	IGSF8
Reactivity:	Human
Host:	Rabbit
Clonality:	Polyclonal
Conjugate:	This IGSF8 antibody is un-conjugated
Application:	ELISA, Immunohistochemistry (IHC)

## Product Details

Immunogen:	Fusion protein of Human IGSF8
Isotype:	IgG
Cross-Reactivity:	Human, Mouse
Purification:	Antigen affinity purification

## Target Details

Target:	IGSF8
Alternative Name:	IGSF8 ( <a href="#">IGSF8 Products</a> )
Background:	Background: This gene encodes a member the EWI subfamily of the immunoglobulin protein superfamily. Members of this family contain a single transmembrane domain, an EWI (Glu-Trp-Ile)-motif and a variable number of immunoglobulin domains. This protein interacts with the tetraspanins CD81 and CD9 and may regulate their role in certain cellular functions including

## Target Details

cell migration and viral infection. The encoded protein may also function as a tumor suppressor by inhibiting the proliferation of certain cancers. Alternate splicing results in multiple transcript variants that encode the same protein.

Aliases: CD316 antibody, CD316 antigen antibody, CD81 partner 3 antibody, CD81P3 antibody, EWI-2 antibody, EWI2 antibody, Glu-Trp-Ile EWI motif-containing protein 2 antibody, igsf-8 antibody, IgSF8 antibody, IGSF8\_HUMAN antibody, Immunoglobulin superfamily member 8 antibody, Immunoglobulin superfamily member 8 precursor antibody, KCT-4 antibody, KCT4 antibody, Keratinocytes-associated transmembrane protein 4 antibody, LIR-D1 antibody, PGRL antibody, Prostaglandin regulatory-like protein antibody

UniProt: [Q969P0](#)

## Application Details

Application Notes: ELISA:1:2000-1:5000, IHC:1:25-1:100,

Restrictions: For Research Use only

## Handling

Format: Liquid

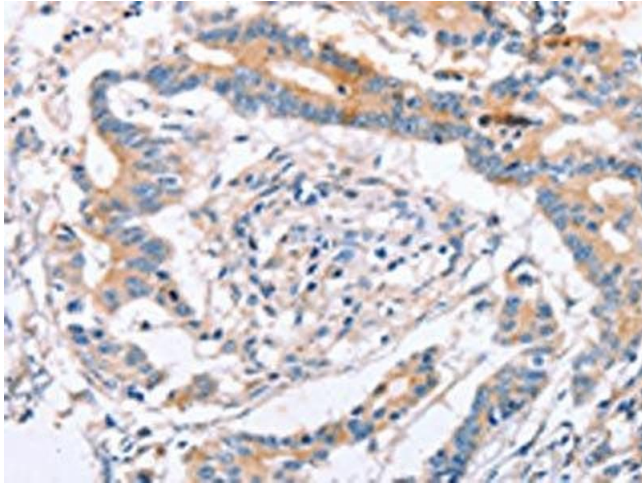
Buffer: -20 °C, pH 7.4 PBS, 0.05 % Sodium azide, 40 % Glycerol

Preservative: Sodium azide

Precaution of Use: This product contains Sodium azide: a POISONOUS AND HAZARDOUS SUBSTANCE which should be handled by trained staff only.

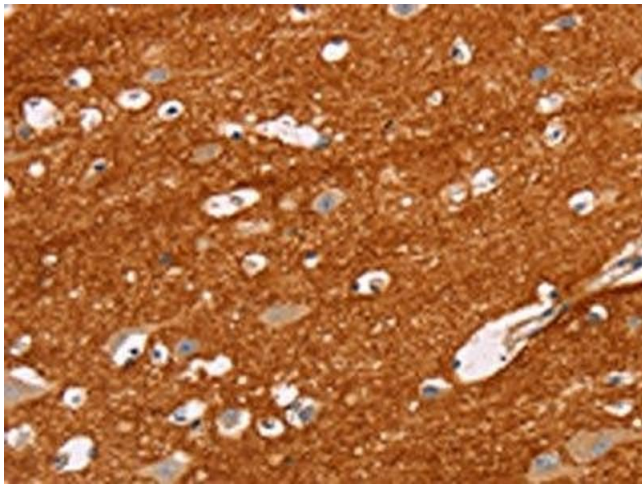
Storage: -20 °C, -80 °C

Storage Comment: Upon receipt, store at -20°C or -80°C. Avoid repeated freeze.



#### Immunohistochemistry

**Image 1.** The image on the left is immunohistochemistry of paraffin-embedded Human colon cancer tissue using ABIN7129824(IGSF8 Antibody) at dilution 1/15, on the right is treated with fusion protein. (Original magnification: x200)



#### Immunohistochemistry

**Image 2.** The image on the left is immunohistochemistry of paraffin-embedded Human brain tissue using ABIN7129824(IGSF8 Antibody) at dilution 1/15, on the right is treated with fusion protein. (Original magnification: x200)