

Datasheet for ABIN7129956

**anti-KCND3 antibody**[Go to Product page](#)**1** Image

## Overview

Quantity:	100 µL
Target:	KCND3
Reactivity:	Human
Host:	Rabbit
Clonality:	Polyclonal
Conjugate:	This KCND3 antibody is un-conjugated
Application:	Western Blotting (WB), ELISA

## Product Details

Immunogen:	Fusion protein of Human KCND3
Isotype:	IgG
Cross-Reactivity:	Human, Mouse
Purification:	Antigen affinity purification

## Target Details

Target:	KCND3
Alternative Name:	KCND3 ( <a href="#">KCND3 Products</a> )
Background:	Background: Voltage-gated potassium (Kv) channels represent the most complex class of voltage-gated ion channels from both functional and structural standpoints. Their diverse functions include regulating neurotransmitter release, heart rate, insulin secretion, neuronal excitability, epithelial electrolyte transport, smooth muscle contraction, and cell volume. Four

## Target Details

sequence-related potassium channel genes - shaker, shaw, shab, and shal - have been identified in Drosophila, and each has been shown to have human homolog(s). This gene encodes a member of the potassium channel, voltage-gated, shal-related subfamily, members of which form voltage-activated A-type potassium ion channels and are prominent in the repolarization phase of the action potential.

Aliases: KCND 3 antibody, KCND 3L antibody, KCND 3S antibody, Kcnd3 antibody, KCND3\_HUMAN antibody, KCND3L antibody, KCND3S antibody, KSHIVB antibody, Kv 4.3 antibody, MGC14203 antibody, MGC142037 antibody, OTTHUMP00000063948 antibody, Potassium ioinic channel Kv4.3 antibody, Potassium voltage gated channel Shal related subfamily member 3 antibody, Potassium voltage gated channel subfamily D member 3 antibody, Potassium voltage-gated channel subfamily D member 3 antibody, Sha1 related potassium channel Kv4.3 antibody, Voltage gated K+ channel antibody, Voltage gated potassium channel Kv4.3 antibody, Voltage gated potassium channel subunit Kv4.3 antibody, Voltage-gated potassium channel subunit Kv4.3 antibody

UniProt: [Q9UK17](#)

## Application Details

Application Notes: ELISA:1:2000-1:5000, WB:1:500-1:2000,

Restrictions: For Research Use only

## Handling

Format: Liquid

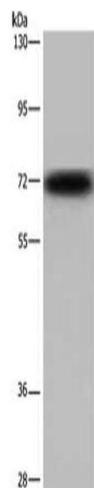
Buffer: -20 °C, pH 7.4 PBS, 0.05 % Sodium azide, 40 % Glycerol

Preservative: Sodium azide

Precaution of Use: This product contains Sodium azide: a POISONOUS AND HAZARDOUS SUBSTANCE which should be handled by trained staff only.

Storage: -20 °C,-80 °C

Storage Comment: Upon receipt, store at -20°C or -80°C. Avoid repeated freeze.



#### Western Blotting

**Image 1.** Gel: 6 % SDS-PAGE, Lysate: 40 µg, Lane: Mouse heart tissue, Primary antibody: ABIN7129956(KCND3 Antibody) at dilution 1/700, Secondary antibody: Goat anti rabbit IgG at 1/8000 dilution, Exposure time: 30 seconds