

Datasheet for ABIN7130018
anti-Kallikrein 15 antibody

3 Images

[Go to Product page](#)

Overview

Quantity:	100 µL
Target:	Kallikrein 15 (KLK15)
Reactivity:	Human
Host:	Rabbit
Clonality:	Polyclonal
Conjugate:	This Kallikrein 15 antibody is un-conjugated
Application:	Western Blotting (WB), ELISA, Immunohistochemistry (IHC)

Product Details

Immunogen:	Fusion protein of Human KLK15
Isotype:	IgG
Cross-Reactivity:	Human
Purification:	Antigen affinity purification

Target Details

Target:	Kallikrein 15 (KLK15)
Alternative Name:	KLK15 (KLK15 Products)
Background:	Background: Kallikreins are a subgroup of serine proteases having diverse physiological functions. Growing evidence suggests that many kallikreins are implicated in carcinogenesis and some have potential as novel cancer and other disease biomarkers. This gene is one of the fifteen kallikrein subfamily members located in a cluster on chromosome 19. In prostate

Target Details

cancer, this gene has increased expression, which indicates its possible use as a diagnostic or prognostic marker for prostate cancer. The gene contains multiple polyadenylation sites and alternative splicing results in multiple transcript variants encoding distinct isoforms.

Aliases: KLK15 antibody, Kallikrein-15 antibody, EC 3.4.21.- antibody, ACO protease antibody

UniProt: [Q9H2R5](#)

Pathways: [Complement System](#)

Application Details

Application Notes: ELISA:1:2000-1:5000, WB:1:200-1:1000, IHC:1:25-1:100,

Restrictions: For Research Use only

Handling

Format: Liquid

Buffer: -20 °C, pH 7.4 PBS, 0.05 % Sodium azide, 40 % Glycerol

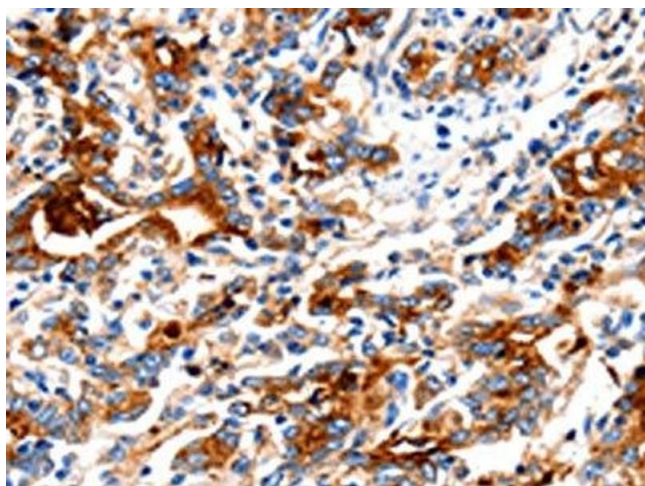
Preservative: Sodium azide

Precaution of Use: This product contains Sodium azide: a POISONOUS AND HAZARDOUS SUBSTANCE which should be handled by trained staff only.

Storage: -20 °C, -80 °C

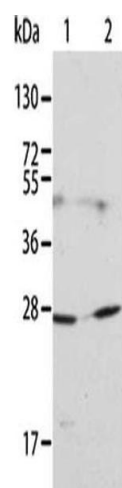
Storage Comment: Upon receipt, store at -20°C or -80°C. Avoid repeated freeze.

Images



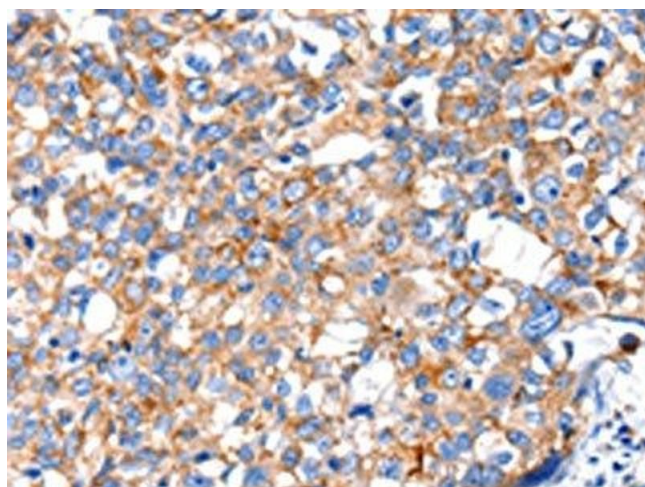
Immunohistochemistry

Image 1. The image on the left is immunohistochemistry of paraffin-embedded Human gastric cancer tissue using ABIN7130018(KLK15 Antibody) at dilution 1/15, on the right is treated with fusion protein. (Original magnification: x200)



Western Blotting

Image 2. Gel: 12 % SDS-PAGE, Lysate: 40 µg, Lane 1-2: 231 cells, HT29 cells, Primary antibody: ABIN7130018(KLK15 Antibody) at dilution 1/200, Secondary antibody: Goat anti rabbit IgG at 1/8000 dilution, Exposure time: 1 minute



Immunohistochemistry

Image 3. The image on the left is immunohistochemistry of paraffin-embedded Human breast cancer tissue using ABIN7130018(KLK15 Antibody) at dilution 1/15, on the right is treated with fusion protein. (Original magnification: x200)