

Datasheet for ABIN7130064

anti-LAT2 antibody**1** Image[Go to Product page](#)

Overview

Quantity:	100 µL
Target:	LAT2
Reactivity:	Human
Host:	Rabbit
Clonality:	Polyclonal
Conjugate:	This LAT2 antibody is un-conjugated
Application:	Immunohistochemistry (IHC), ELISA

Product Details

Immunogen:	Fusion protein of Human LAT2
Isotype:	IgG
Cross-Reactivity:	Human
Purification:	Antigen affinity purification

Target Details

Target:	LAT2
Alternative Name:	LAT2 (LAT2 Products)
Background:	Background: This gene is one of the contiguous genes at 7q11.23 commonly deleted in Williams syndrome, a multisystem developmental disorder. This gene consists of at least 14 exons, and its alternative splicing generates 3 transcript variants, all encoding the same protein. Involved in FCER1 (high affinity immunoglobulin epsilon receptor)-mediated signaling in mast

Target Details

cells. May also be involved in BCR (B-cell antigen receptor)-mediated signaling in B-cells and FCGR1 (high affinity immunoglobulin gamma Fc receptor I)-mediated signaling in myeloid cells. Couples activation of these receptors and their associated kinases with distal intracellular events through the recruitment of GRB2.

Aliases: HSPC046 antibody, LAB antibody, LAT2 antibody, Linker for activation of B cells antibody, Linker for activation of B-cells antibody, Linker for activation of T cells family member 2 antibody, Linker for activation of T cells transmembrane adaptor 2 antibody, Linker for activation of T-cells family member 2 antibody, Membrane associated adapter molecule antibody, Membrane-associated adapter molecule antibody, Non T cell activation linker antibody, Non-T-cell activation linker antibody, NTAL_HUMAN antibody, WBSCR 5 antibody, Wbscr15 antibody, Williams Beuren syndrome chromosome region 15 antibody, Williams Beuren syndrome chromosome region 5 antibody, Williams-Beuren syndrome chromosomal region 15 protein antibody, Williams-Beuren syndrome chromosomal region 5 protein antibody, WSCR5 antibody

UniProt: [Q9GZY6](#)

Pathways: [Fc-epsilon Receptor Signaling Pathway](#), [BCR Signaling](#)

Application Details

Application Notes: ELISA:1:1000-1:5000, IHC:1:10-1:50,

Restrictions: For Research Use only

Handling

Format: Liquid

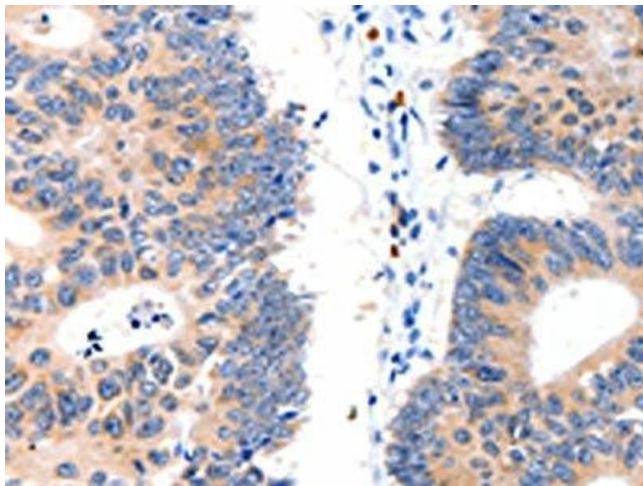
Buffer: -20 °C, pH 7.4 PBS, 0.05 % Sodium azide, 40 % Glycerol

Preservative: Sodium azide

Precaution of Use: This product contains Sodium azide: a POISONOUS AND HAZARDOUS SUBSTANCE which should be handled by trained staff only.

Storage: -20 °C,-80 °C

Storage Comment: Upon receipt, store at -20°C or -80°C. Avoid repeated freeze.



Immunohistochemistry

Image 1. The image on the left is immunohistochemistry of paraffin-embedded Human colon cancer tissue using ABIN7130064(LAT2 Antibody) at dilution 1/15, on the right is treated with fusion protein. (Original magnification: x200)