

Datasheet for ABIN7130299

**anti-MUC15 antibody****3** Images[Go to Product page](#)

## Overview

Quantity:	100 µL
Target:	MUC15
Reactivity:	Human
Host:	Rabbit
Clonality:	Polyclonal
Conjugate:	This MUC15 antibody is un-conjugated
Application:	Western Blotting (WB), Immunohistochemistry (IHC), ELISA

## Product Details

Immunogen:	Fusion protein of Human MUC15
Isotype:	IgG
Cross-Reactivity:	Human
Purification:	Antigen affinity purification

## Target Details

Target:	MUC15
Alternative Name:	MUC15 ( <a href="#">MUC15 Products</a> )
Background:	Background: Mucins are a family of high molecular weight, heavily glycosylated proteins (glycoconjugates) produced by epithelial tissues in most metazoans. Mucin 15 is involved in cell adhesion to the extracellular matrix. It is primarily expressed in prostate, testis, lung, spleen, thymus, ovary, small intestine, colon, bone marrow, lymph node, lung and peripheral blood

## Target Details

leukocytes. Mucin 15 is a highly glycosylated protein.

Aliases: Component II antibody, Glycoprotein 4 antibody, Glycoprotein C antibody, MUC 15 antibody, MUC-15 antibody, Muc15 antibody, MUC15\_HUMAN antibody, Mucin 15 antibody, Mucin 15 cell surface associated antibody, Mucin-15 antibody, PAS3 antibody, PASIII antibody

UniProt: [Q8N387](#)

## Application Details

Application Notes: ELISA:1:1000-1:2000, WB:1:200-1:1000, IHC:1:15-1:50,

Restrictions: For Research Use only

## Handling

Format: Liquid

Buffer: -20 °C, pH 7.4 PBS, 0.05 % Sodium azide, 40 % Glycerol

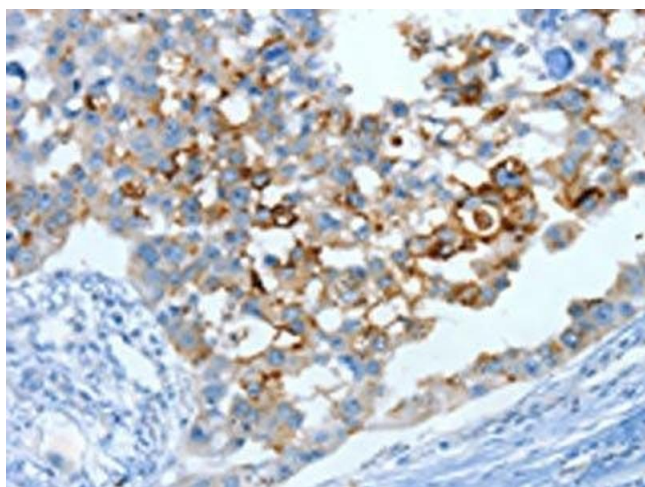
Preservative: Sodium azide

Precaution of Use: This product contains Sodium azide: a POISONOUS AND HAZARDOUS SUBSTANCE which should be handled by trained staff only.

Storage: -20 °C,-80 °C

Storage Comment: Upon receipt, store at -20°C or -80°C. Avoid repeated freeze.

## Images



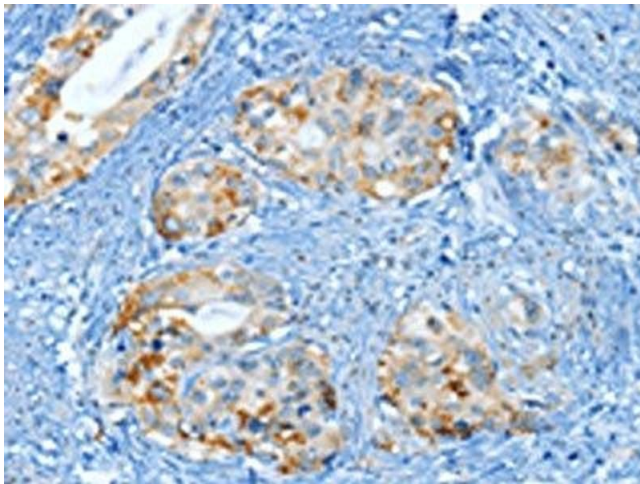
### Immunohistochemistry

**Image 1.** The image on the left is immunohistochemistry of paraffin-embedded Human breast cancer tissue using ABIN7130299(MUC15 Antibody) at dilution 1/25, on the right is treated with fusion protein. (Original magnification: x200)



### Western Blotting

**Image 2.** Gel: 6 % SDS-PAGE, Lysate: 40 µg, Lane: Human testis tissue, Primary antibody: ABIN7130299(MUC15 Antibody) at dilution 1/200, Secondary antibody: Goat anti rabbit IgG at 1/8000 dilution, Exposure time: 10 seconds



### Immunohistochemistry

**Image 3.** The image on the left is immunohistochemistry of paraffin-embedded Human cervical cancer tissue using ABIN7130299(MUC15 Antibody) at dilution 1/25, on the right is treated with fusion protein. (Original magnification: x200)