

Datasheet for ABIN7130344

anti-NAT8 antibody**3** Images[Go to Product page](#)

Overview

Quantity:	100 µL
Target:	NAT8
Reactivity:	Human
Host:	Rabbit
Clonality:	Polyclonal
Conjugate:	This NAT8 antibody is un-conjugated
Application:	Immunohistochemistry (IHC), Western Blotting (WB), ELISA

Product Details

Immunogen:	Fusion protein of Human NAT8
Isotype:	IgG
Cross-Reactivity:	Human, Mouse
Purification:	Antigen affinity purification

Target Details

Target:	NAT8
Alternative Name:	NAT8 (NAT8 Products)
Background:	Background: This gene, isolated using the differential display method to detect tissue-specific genes, is specifically expressed in kidney and liver. The encoded protein shows amino acid sequence similarity to N-acetyltransferases. A similar protein in Xenopus affects cell adhesion and gastrulation movements, and may be localized in the secretory pathway. A highly similar

Target Details

paralog is found in a cluster with this gene.

Aliases: acetyltransferase 2 antibody, ATase2 antibody, Camello, Xenopus, homolog of, 1 antibody, Camello-like protein 1 antibody, CML1 antibody, cysteinyl-conjugate N-acetyltransferase antibody, GLA antibody, Hcm11 antibody, kidney- and liver-specific gene product antibody, N-acetyltransferase 8 (camello like) antibody, N-acetyltransferase 8 (GCN5-related, putative) antibody, N-acetyltransferase 8 antibody, NAT8 antibody, NAT8_HUMAN antibody, Probable N-acetyltransferase 8 antibody, TSC501 antibody, TSC510 antibody

UniProt: [Q9UHE5](#)

Application Details

Application Notes: ELISA:1:1000-1:5000, WB:1:200-1:1000, IHC:1:50-1:200,

Restrictions: For Research Use only

Handling

Format: Liquid

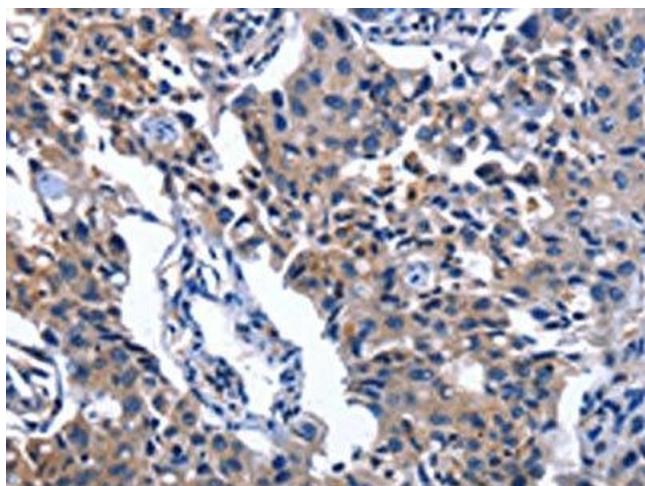
Buffer: -20 °C, pH 7.4 PBS, 0.05 % Sodium azide, 40 % Glycerol

Preservative: Sodium azide

Precaution of Use: This product contains Sodium azide: a POISONOUS AND HAZARDOUS SUBSTANCE which should be handled by trained staff only.

Storage: -20 °C, -80 °C

Storage Comment: Upon receipt, store at -20°C or -80°C. Avoid repeated freeze.



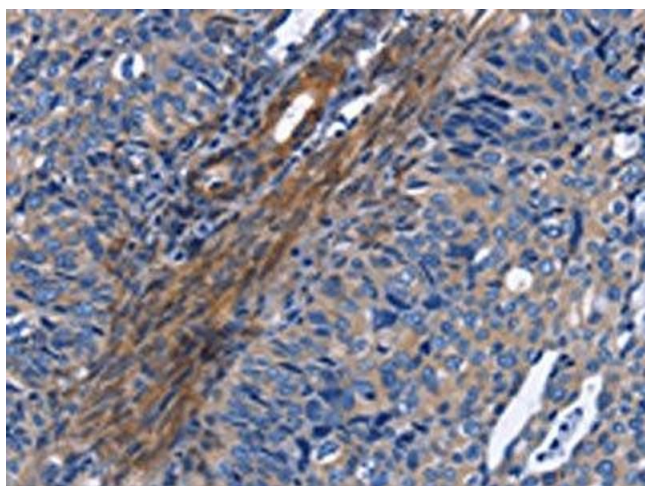
Immunohistochemistry

Image 1. The image on the left is immunohistochemistry of paraffin-embedded Human lung cancer tissue using ABIN7130344(NAT8 Antibody) at dilution 1/50, on the right is treated with fusion protein. (Original magnification: x200)



Western Blotting

Image 2. Gel: 8 % SDS-PAGE, Lysate: 40 µg, Lane 1-2: Mouse kidney tissue, Mouse liver tissue, Primary antibody: ABIN7130344(NAT8 Antibody) at dilution 1/237.5, Secondary antibody: Goat anti rabbit IgG at 1/8000 dilution, Exposure time: 20 seconds



Immunohistochemistry

Image 3. The image on the left is immunohistochemistry of paraffin-embedded Human cervical cancer tissue using ABIN7130344(NAT8 Antibody) at dilution 1/50, on the right is treated with fusion protein. (Original magnification: x200)