

Datasheet for ABIN7130359

**anti-NDEL1 antibody**[Go to Product page](#)**1** Image

## Overview

Quantity:	100 µL
Target:	NDEL1
Reactivity:	Human
Host:	Rabbit
Clonality:	Polyclonal
Conjugate:	This NDEL1 antibody is un-conjugated
Application:	ELISA, Immunohistochemistry (IHC)

## Product Details

Immunogen:	Fusion protein of Human NDEL1
Isotype:	IgG
Cross-Reactivity:	Human, Mouse, Rat
Purification:	Antigen affinity purification

## Target Details

Target:	NDEL1
Alternative Name:	NDEL1 ( <a href="#">NDEL1 Products</a> )
Background:	Background: This gene encodes a coiled-coil protein that plays a role in multiple processes including cytoskeletal organization, cell signaling and neuron migration, outgrowth and maintenance. Alternatively spliced transcript variants encoding multiple isoforms have been observed for this gene, and a pseudogene of this gene is located on the long arm of

## Target Details

chromosome X.

Aliases: A. nidulans antibody, DKFZp451M0318 antibody, ENDOOLIGOPEPTIDASE A antibody, EOPA antibody, MITAP 1 antibody, MITAP1 antibody, Mitosin associated protein 1 antibody, Mitosin associated protein MITAP1 antibody, Mitosin-associated protein 1 antibody, Ndel 1 antibody, NDEL1 antibody, NDEL1\_HUMAN antibody, Nuclear distribution gene E like homolog 1 antibody, Nuclear distribution protein nudE like 1 antibody, Nuclear distribution protein nudE-like 1 antibody, NUDE like protein antibody, NudE nuclear distribution gene E homolog like 1 A. nidulans antibody, NudE nuclear distribution gene E homolog like 1 antibody, NUDEL antibody, Protein Nudel antibody

UniProt: [Q9GZM8](#)

Pathways: [Regulation of Cell Size](#)

## Application Details

Application Notes: ELISA:1:2000-1:5000, IHC:1:50-1:200,

Restrictions: For Research Use only

## Handling

Format: Liquid

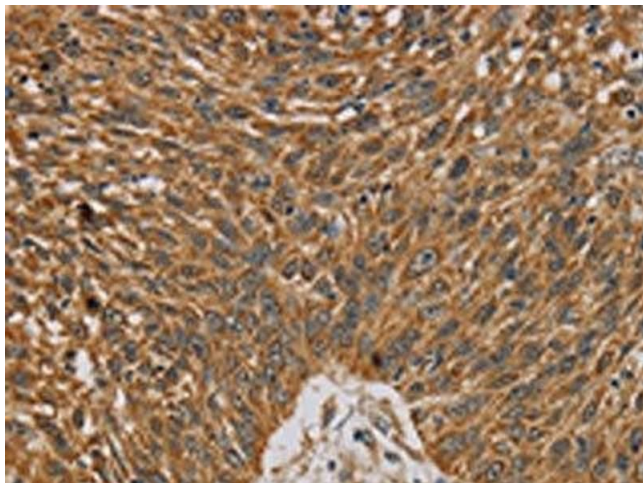
Buffer: -20 °C, pH 7.4 PBS, 0.05 % Sodium azide, 40 % Glycerol

Preservative: Sodium azide

Precaution of Use: This product contains Sodium azide: a POISONOUS AND HAZARDOUS SUBSTANCE which should be handled by trained staff only.

Storage: -20 °C, -80 °C

Storage Comment: Upon receipt, store at -20°C or -80°C. Avoid repeated freeze.



#### Immunohistochemistry

**Image 1.** The image on the left is immunohistochemistry of paraffin-embedded Human lung cancer tissue using ABIN7130359(NDEL1 Antibody) at dilution 1/20, on the right is treated with fusion protein. (Original magnification: x200)