

Datasheet for ABIN7130361 **anti-NDUFA1 antibody**

3 Images



[Go to Product page](#)

Overview

Quantity:	100 µL
Target:	NDUFA1
Reactivity:	Human
Host:	Rabbit
Clonality:	Polyclonal
Conjugate:	This NDUFA1 antibody is un-conjugated
Application:	ELISA, Western Blotting (WB), Immunohistochemistry (IHC)

Product Details

Immunogen:	Fusion protein of Human NDUFA1
Isotype:	IgG
Cross-Reactivity:	Human
Purification:	Antigen affinity purification

Target Details

Target:	NDUFA1
Alternative Name:	NDUFA1 (NDUFA1 Products)
Background:	Background: The human NDUFA1 gene codes for an essential component of complex I of the respiratory chain, which transfers electrons from NADH to ubiquinone. It has been noted that the N-terminal hydrophobic domain has the potential to be folded into an alpha-helix spanning the inner mitochondrial membrane with a C-terminal hydrophilic domain interacting with

Target Details

globular subunits of complex I. The highly conserved two-domain structure suggests that this feature is critical for the protein function and might act as an anchor for the NADH:ubiquinone oxidoreductase complex at the inner mitochondrial membrane.

Aliases: CI MWFE antibody, CI-MWFE antibody, Complex I MWFE antibody, complex I MWFE subunit antibody, Complex I-MWFE antibody, MWFE antibody, MWFE, B. taurus, homolog of antibody, NADH dehydrogenase (ubiquinone) 1 alpha subcomplex 1 7.5 kDa antibody, NADH dehydrogenase (ubiquinone) 1 alpha subcomplex 1 antibody, NADH dehydrogenase [ubiquinone] 1 alpha subcomplex subunit 1 antibody, NADH oxidoreductase subunit MWFE antibody, NADH ubiquinone oxidoreductase (complex 1) antibody, NADH ubiquinone oxidoreductase MWFE subunit antibody, NADH-ubiquinone oxidoreductase 1 alpha subcomplex, 1 antibody, NADH-ubiquinone oxidoreductase MWFE subunit antibody, NDUFA1_HUMAN antibody, NDUFA 1 antibody, NDUFA1 antibody, Type I dehydrogenase antibody, ZNF 183 antibody, ZNF183 antibody

UniProt: [015239](#)

Application Details

Application Notes: ELISA:1:2000-1:5000, WB:1:500-1:2000, IHC:1:100-1:300,

Restrictions: For Research Use only

Handling

Format: Liquid

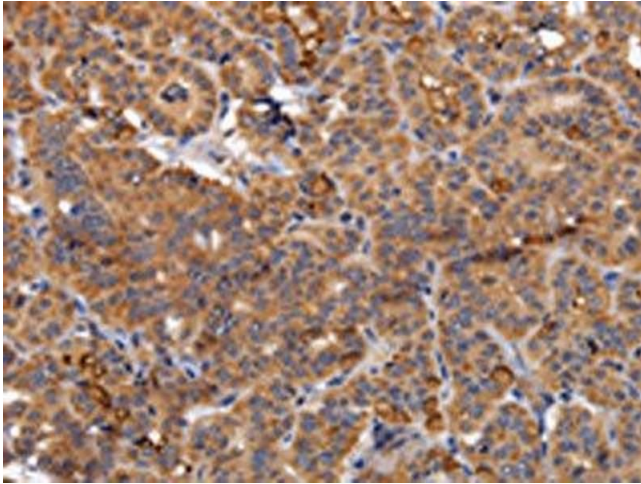
Buffer: -20 °C, pH 7.4 PBS, 0.05 % Sodium azide, 40 % Glycerol

Preservative: Sodium azide

Precaution of Use: This product contains Sodium azide: a POISONOUS AND HAZARDOUS SUBSTANCE which should be handled by trained staff only.

Storage: -20 °C, -80 °C

Storage Comment: Upon receipt, store at -20°C or -80°C. Avoid repeated freeze.



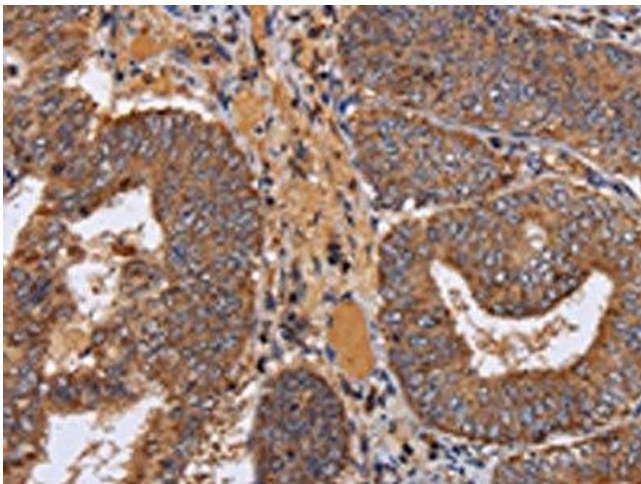
Immunohistochemistry

Image 1. The image on the left is immunohistochemistry of paraffin-embedded Human thyroid cancer tissue using ABIN7130361(NDUFA1 Antibody) at dilution 1/70, on the right is treated with fusion protein. (Original magnification: x200)



Western Blotting

Image 2. Gel: 10 % SDS-PAGE, Lysate: 40 µg, Lane: Hela cells, Primary antibody: ABIN7130361(NDUFA1 Antibody) at dilution 1/400, Secondary antibody: Goat anti rabbit IgG at 1/8000 dilution, Exposure time: 10 seconds



Immunohistochemistry

Image 3. The image on the left is immunohistochemistry of paraffin-embedded Human colon cancer tissue using ABIN7130361(NDUFA1 Antibody) at dilution 1/70, on the right is treated with fusion protein. (Original magnification: x200)