

## Datasheet for ABIN7130371

**anti-NDUFA6 antibody**[Go to Product page](#)

## 1 Image

## Overview

Quantity:	100 µL
Target:	NDUFA6
Reactivity:	Human
Host:	Rabbit
Clonality:	Polyclonal
Conjugate:	This NDUFA6 antibody is un-conjugated
Application:	ELISA, Western Blotting (WB)

## Product Details

Immunogen:	Fusion protein of Human NDUFA6
Isotype:	IgG
Cross-Reactivity:	Human, Mouse
Purification:	Antigen affinity purification

## Target Details

Target:	NDUFA6
Alternative Name:	NDUFA6 ( <a href="#">NDUFA6 Products</a> )
Background:	Background: NDUFA6 (NADH dehydrogenase (ubiquinone) 1 alpha subcomplex, 6), also known as LYRM6 (LYR motif-containing protein 6), NADHB14 or B14, is a 128 amino acid protein that localizes to the matrix side of the mitochondrial membrane and belongs to the complex I LYR family. Existing as a subunit of the multi-protein membrane respiratory chain NADH

## Target Details

dehydrogenase complex (Complex I), NDUFA6 functions as an accessory protein that facilitates the transfer of electrons from NADH to the respiratory chain.

Aliases: B14 antibody, CI-B14 antibody, complex I B14 subunit antibody, Complex I-B14 antibody, LYR motif-containing protein 6 antibody, LYRM6 antibody, NADH dehydrogenase (ubiquinone) 1 alpha subcomplex, 6 (14kD, B14) antibody, NADH dehydrogenase (ubiquinone) 1 alpha subcomplex, 6, 14 kDa antibody, NADH dehydrogenase [ubiquinone] 1 alpha subcomplex subunit 6 antibody, NADH-ubiquinone oxidoreductase 1 alpha subcomplex, 6 antibody, NADH-ubiquinone oxidoreductase B14 subunit antibody, NADHB14 antibody, NDUA6\_HUMAN antibody, NDUFA6 antibody

UniProt: [P56556](#)

## Application Details

Application Notes: ELISA:1:1000-1:2000, WB:1:200-1:1000,

Restrictions: For Research Use only

## Handling

Format: Liquid

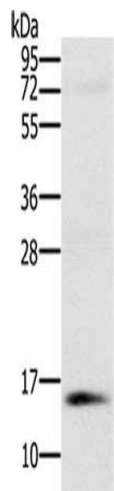
Buffer: -20 °C, pH 7.4 PBS, 0.05 % Sodium azide, 40 % Glycerol

Preservative: Sodium azide

Precaution of Use: This product contains Sodium azide: a POISONOUS AND HAZARDOUS SUBSTANCE which should be handled by trained staff only.

Storage: -20 °C,-80 °C

Storage Comment: Upon receipt, store at -20°C or -80°C. Avoid repeated freeze.



#### Western Blotting

**Image 1.** Gel: 10 % SDS-PAGE, Lysate: 40 µg, Lane: Human normal kidney tissue, Primary antibody: ABIN7130371(NDUFA6 Antibody) at dilution 1/250, Secondary antibody: Goat anti rabbit IgG at 1/8000 dilution, Exposure time: 1 minute