



Datasheet for ABIN7130495 **anti-Olfactomedin 3 antibody**



[Go to Product page](#)

1 Image

Overview

Quantity:	100 µL
Target:	Olfactomedin 3 (OLFM3)
Reactivity:	Human
Host:	Rabbit
Clonality:	Polyclonal
Conjugate:	This Olfactomedin 3 antibody is un-conjugated
Application:	Western Blotting (WB), ELISA

Product Details

Immunogen:	Fusion protein of Human OLFM3
Isotype:	IgG
Cross-Reactivity:	Human, Mouse, Rat
Purification:	Antigen affinity purification

Target Details

Target:	Olfactomedin 3 (OLFM3)
Alternative Name:	OLFM3 (OLFM3 Products)
Background:	Background: OLFM3 (olfactomedin 3), also known as NOE3, is a 478 amino acid protein that interacts with myocilin. Myocilin is an extracellular protein that plays a key role in the actomyosin system and is responsible for controlling intraocular pressure. OLFM3 is a secreted protein that contains an olfactomedin-like (OLF) domain, an approximately 260 amino acid

Target Details

motif commonly found in secreted glycoproteins. OLFM3 localizes to the Golgi apparatus of the cell and is highly expressed in both eye and brain tissue. Mutations in the gene that encodes OLFM3 may cause severe glaucoma, a condition in which increased intraocular pressure within the eyeball causes loss of eye sight.

Aliases: OLFM3 antibody, NOE3 antibody, UNQ1924/PRO4399 antibody, Noelin-3 antibody, Olfactomedin-3 antibody, Optimedien antibody

UniProt: [Q96PB7](#)

Application Details

Application Notes: ELISA:1:1000-1:2000, WB:1:200-1:1000,

Restrictions: For Research Use only

Handling

Format: Liquid

Buffer: -20 °C, pH 7.4 PBS, 0.05 % Sodium azide, 40 % Glycerol

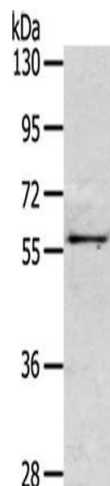
Preservative: Sodium azide

Precaution of Use: This product contains Sodium azide: a POISONOUS AND HAZARDOUS SUBSTANCE which should be handled by trained staff only.

Storage: -20 °C,-80 °C

Storage Comment: Upon receipt, store at -20°C or -80°C. Avoid repeated freeze.

Images



Western Blotting

Image 1. Gel: 6 % SDS-PAGE, Lysate: 40 µg, Lane: Mouse intestines tissue, Primary antibody: ABIN7130495(OLFM3 Antibody) at dilution 1/200, Secondary antibody: Goat anti rabbit IgG at 1/8000 dilution, Exposure time: 2 minutes