

Datasheet for ABIN7130504
anti-ORM1 antibody



[Go to Product page](#)

1 Image

Overview

Quantity:	100 µL
Target:	ORM1
Reactivity:	Human
Host:	Rabbit
Clonality:	Polyclonal
Conjugate:	This ORM1 antibody is un-conjugated
Application:	Western Blotting (WB), ELISA

Product Details

Immunogen:	Fusion protein of Human ORM1
Isotype:	IgG
Cross-Reactivity:	Human
Purification:	Antigen affinity purification

Target Details

Target:	ORM1
Alternative Name:	ORM1 (ORM1 Products)
Background:	Background: This gene encodes a key acute phase plasma protein. Because of its increase due to acute inflammation, this protein is classified as an acute-phase reactant. The specific function of this protein has not yet been determined, however, it may be involved in aspects of immunosuppression.

Target Details

Aliases: A1AG1_HUMAN antibody, AGP 1 antibody, AGP A antibody, AGP antibody, AGP1 antibody, Alpha 1 acid glycoprotein antibody, Alpha-1-acid glycoprotein 1 antibody, alpha-1-AGP antibody, Epididymis secretory sperm binding protein Li 153w antibody, glycoprotein, alpha-1-acid, of serum antibody, HEL S 153w antibody, OMD 1 antibody, ORM antibody, ORM1 antibody, Orosomucoid 1 antibody, Orosomucoid-1 antibody

UniProt: [P02763](#)

Pathways: [Response to Growth Hormone Stimulus](#)

Application Details

Application Notes: ELISA:1:1000-1:2000, WB:1:200-1:1000,

Restrictions: For Research Use only

Handling

Format: Liquid

Buffer: -20 °C, pH 7.4 PBS, 0.05 % Sodium azide, 40 % Glycerol

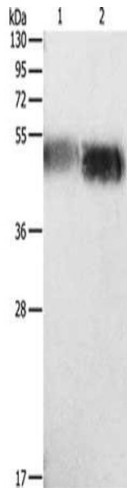
Preservative: Sodium azide

Precaution of Use: This product contains Sodium azide: a POISONOUS AND HAZARDOUS SUBSTANCE which should be handled by trained staff only.

Storage: -20 °C,-80 °C

Storage Comment: Upon receipt, store at -20°C or -80°C. Avoid repeated freeze.

Images



Western Blotting

Image 1. Gel: 12 % SDS-PAGE, Lysate: 40 µg, Lane 1-2: Human testis tissue, Human prostate tissue, Primary antibody: ABIN7130504(ORM1 Antibody) at dilution 1/133, Secondary antibody: Goat anti rabbit IgG at 1/8000 dilution, Exposure time: 2 minutes