

Datasheet for ABIN7130524

anti-PAEP antibody**3** Images[Go to Product page](#)

Overview

Quantity:	100 µL
Target:	PAEP
Reactivity:	Human
Host:	Rabbit
Clonality:	Polyclonal
Conjugate:	This PAEP antibody is un-conjugated
Application:	Western Blotting (WB), ELISA, Immunohistochemistry (IHC)

Product Details

Immunogen:	Fusion protein of Human PAEP
Isotype:	IgG
Cross-Reactivity:	Human, Mouse
Purification:	Antigen affinity purification

Target Details

Target:	PAEP
Alternative Name:	PAEP (PAEP Products)
Background:	<p>Background: This gene is a member of the kernel lipocalin superfamily whose members share relatively low sequence similarity but have highly conserved exon/intron structure and three-dimensional protein folding. Most lipocalins are clustered on the long arm of chromosome 9.</p> <p>The encoded glycoprotein has been previously referred to as pregnancy-associated</p>

Target Details

endometrial alpha-2-globulin, placental protein 14, and glycodelin, but has been officially named progesteragen-associated endometrial protein. Three distinct forms, with identical protein backbones but different glycosylation profiles, are found in amniotic fluid, follicular fluid and seminal plasma of the reproductive system.

Aliases: Alpha uterine protein antibody, gD antibody, GdA antibody, GdF antibody, GdS antibody, Glycodelin A antibody, Glycodelin antibody, Glycodelin F antibody, Glycodelin S antibody, MGC138509 antibody, MGC142288 antibody, PAEG antibody, PAEP antibody, PAEP_HUMAN antibody, PEG antibody, PEP antibody, Placental Protein 14 / Glycodelin A antibody, Placental protein 14 antibody, PP14 antibody, Pregnancy-associated endometrial alpha-2 globulin antibody, Progesteragen-associated endometrial protein antibody, Progesterone-associated endometrial protein antibody

UniProt: [P09466](#)

Application Details

Application Notes: ELISA:1:1000-1:2000, WB:1:200-1:1000, IHC:1:100-1:300,

Restrictions: For Research Use only

Handling

Format: Liquid

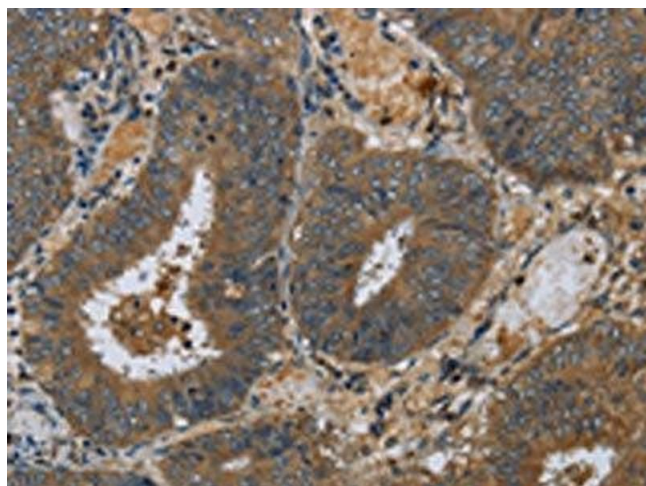
Buffer: -20 °C, pH 7.4 PBS, 0.05 % Sodium azide, 40 % Glycerol

Preservative: Sodium azide

Precaution of Use: This product contains Sodium azide: a POISONOUS AND HAZARDOUS SUBSTANCE which should be handled by trained staff only.

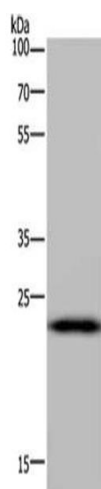
Storage: -20 °C,-80 °C

Storage Comment: Upon receipt, store at -20°C or -80°C. Avoid repeated freeze.



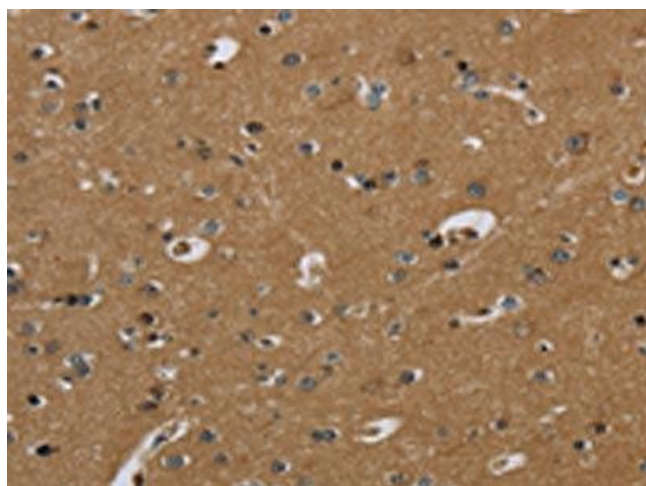
Immunohistochemistry

Image 1. The image on the left is immunohistochemistry of paraffin-embedded Human colon cancer tissue using ABIN7130524(PAEP Antibody) at dilution 1/60, on the right is treated with fusion protein. (Original magnification: x200)



Western Blotting

Image 2. Gel: 10 % SDS-PAGE, Lysate: 40 µg, Lane: Mouse liver tissue, Primary antibody: ABIN7130524(PAEP Antibody) at dilution 1/300, Secondary antibody: Goat anti rabbit IgG at 1/8000 dilution, Exposure time: 5 minutes



Immunohistochemistry

Image 3. The image on the left is immunohistochemistry of paraffin-embedded Human brain tissue using ABIN7130524(PAEP Antibody) at dilution 1/60, on the right is treated with fusion protein. (Original magnification: x200)