



[Go to Product page](#)

Datasheet for ABIN7130527

anti-PAGE2 antibody

2 Images

Overview

Quantity:	100 µL
Target:	PAGE2
Reactivity:	Human
Host:	Rabbit
Clonality:	Polyclonal
Conjugate:	This PAGE2 antibody is un-conjugated
Application:	ELISA, Immunohistochemistry (IHC)

Product Details

Immunogen:	Fusion protein of Human PAGE2
Isotype:	IgG
Cross-Reactivity:	Human
Purification:	Antigen affinity purification

Target Details

Target:	PAGE2
Alternative Name:	PAGE2 (PAGE2 Products)
Background:	Background: PAGE-2 (prostate-associated gene 2 protein), also known as P antigen family member 2B, GAGEC2, CT16.4 or GAGEE2, is a 111 amino acid protein that is expressed primarily in testis and belongs to the GAGE family. PAGE-2B (prostate-associated gene 2B protein), also designated putative G antigen family E member 3, P antigen family member 2B,

Target Details

CT16.5 or GAGEE3, also consists of 111 amino acids and is a member of the GAGE family. Both proteins are encoded by genes that map to human chromosome X, which consists of about 153 million base pairs and nearly 1,000 genes. The combination of a X and Y chromosome lead to normal male development while two copies of X lead to normal female development.

Aliases: PAGE2 antibody, GAGEC2 antibody, GAGEE2 antibody, P antigen family member 2 antibody, PAGE-2 antibody, G antigen family C 2 antibody, Prostate-associated gene 2 protein antibody

UniProt: [Q7Z2X7](#)

Application Details

Application Notes: ELISA:1:1000-1:2000, IHC:1:25-1:100,

Restrictions: For Research Use only

Handling

Format: Liquid

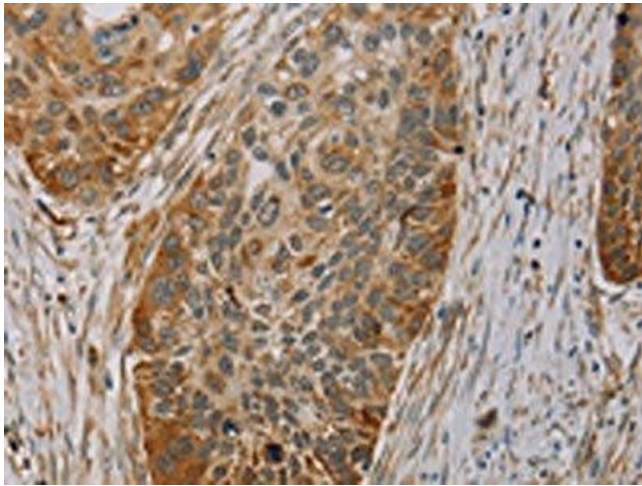
Buffer: -20 °C, pH 7.4 PBS, 0.05 % Sodium azide, 40 % Glycerol

Preservative: Sodium azide

Precaution of Use: This product contains Sodium azide: a POISONOUS AND HAZARDOUS SUBSTANCE which should be handled by trained staff only.

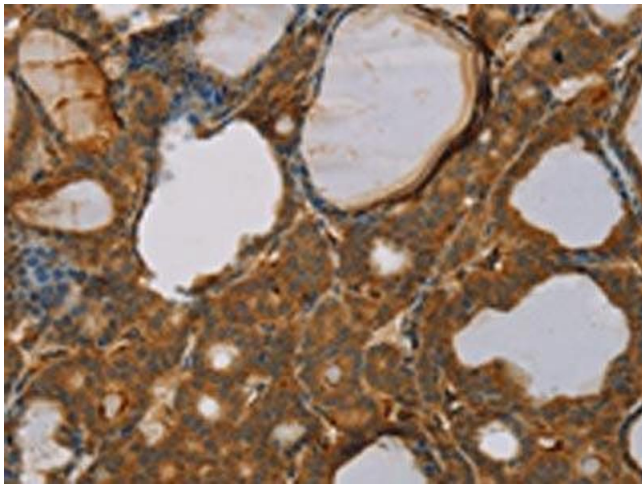
Storage: -20 °C,-80 °C

Storage Comment: Upon receipt, store at -20°C or -80°C. Avoid repeated freeze.



Immunohistochemistry

Image 1. The image on the left is immunohistochemistry of paraffin-embedded Human esophagus cancer tissue using ABIN7130527(PAGE2 Antibody) at dilution 1/20, on the right is treated with fusion protein. (Original magnification: x200)



Immunohistochemistry

Image 2. The image on the left is immunohistochemistry of paraffin-embedded Human thyroid cancer tissue using ABIN7130527(PAGE2 Antibody) at dilution 1/20, on the right is treated with fusion protein. (Original magnification: x200)