



[Go to Product page](#)

Datasheet for ABIN7130528

## anti-PAGE2 antibody

### 3 Images

#### Overview

Quantity:	100 µL
Target:	PAGE2
Reactivity:	Human
Host:	Rabbit
Clonality:	Polyclonal
Conjugate:	This PAGE2 antibody is un-conjugated
Application:	ELISA, Immunohistochemistry (IHC), Western Blotting (WB)

#### Product Details

Immunogen:	Fusion protein of Human PAGE2
Isotype:	IgG
Cross-Reactivity:	Human, Mouse
Purification:	Antigen affinity purification

#### Target Details

Target:	PAGE2
Alternative Name:	PAGE2 ( <a href="#">PAGE2 Products</a> )
Background:	Background: PAGE-2 (prostate-associated gene 2 protein), also known as P antigen family member 2B, GAGEC2, CT16.4 or GAGEE2, is a 111 amino acid protein that is expressed primarily in testis and belongs to the GAGE family. PAGE-2B (prostate-associated gene 2B protein), also designated putative G antigen family E member 3, P antigen family member 2B,

## Target Details

CT16.5 or GAGEE3, also consists of 111 amino acids and is a member of the GAGE family.  
Aliases: PAGE2 antibody, GAGEC2 antibody, GAGEE2 antibody, P antigen family member 2 antibody, PAGE-2 antibody, G antigen family C 2 antibody, Prostate-associated gene 2 protein antibody

UniProt: [Q7Z2X7](#)

## Application Details

Application Notes: ELISA:1:1000-1:2000, WB:1:200-1:1000, IHC:1:25-1:100,

Restrictions: For Research Use only

## Handling

Format: Liquid

Buffer: -20 °C, pH 7.4 PBS, 0.05 % Sodium azide, 40 % Glycerol

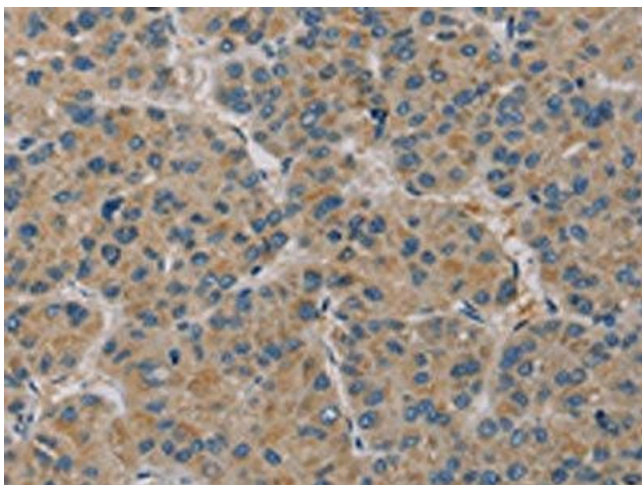
Preservative: Sodium azide

Precaution of Use: This product contains Sodium azide: a POISONOUS AND HAZARDOUS SUBSTANCE which should be handled by trained staff only.

Storage: -20 °C,-80 °C

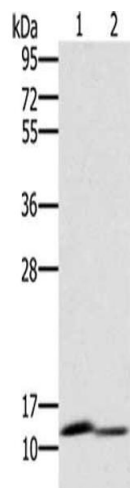
Storage Comment: Upon receipt, store at -20°C or -80°C. Avoid repeated freeze.

## Images



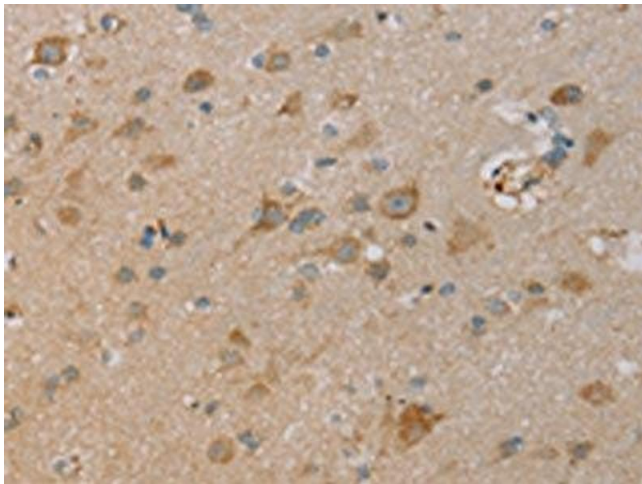
### Immunohistochemistry

**Image 1.** The image on the left is immunohistochemistry of paraffin-embedded Human liver cancer tissue using ABIN7130528(PAGE2 Antibody) at dilution 1/20, on the right is treated with fusion protein. (Original magnification: x200)



### Western Blotting

**Image 2.** Gel: 10 % SDS-PAGE, Lysate: 40 µg, Lane 1-2: Mouse brain tissue, Mouse kidney tissue, Primary antibody: ABIN7130528(PAGE2 Antibody) at dilution 1/400, Secondary antibody: Goat anti rabbit IgG at 1/8000 dilution, Exposure time: 1 minute



### Immunohistochemistry

**Image 3.** The image on the left is immunohistochemistry of paraffin-embedded Human brain tissue using ABIN7130528(PAGE2 Antibody) at dilution 1/20, on the right is treated with fusion protein. (Original magnification: x200)