

Datasheet for ABIN7130598

anti-PGC antibody

3 Images

[Go to Product page](#)

Overview

Quantity:	100 µL
Target:	PGC
Reactivity:	Human
Host:	Rabbit
Clonality:	Polyclonal
Conjugate:	This PGC antibody is un-conjugated
Application:	Western Blotting (WB), ELISA, Immunohistochemistry (IHC)

Product Details

Immunogen:	Fusion protein of Human PGC
Isotype:	IgG
Cross-Reactivity:	Human
Purification:	Antigen affinity purification

Target Details

Target:	PGC
Alternative Name:	PGC (PGC Products)
Background:	Background: This gene encodes an aspartic proteinase that belongs to the peptidase family A1. The encoded protein is a digestive enzyme that is produced in the stomach and constitutes a major component of the gastric mucosa. This protein is also secreted into the serum. This protein is synthesized as an inactive zymogen that includes a highly basic prosegment. This

Target Details

enzyme is converted into its active mature form at low pH by sequential cleavage of the prosegment that is carried out by the enzyme itself. Polymorphisms in this gene are associated with susceptibility to gastric cancers. Serum levels of this enzyme are used as a biomarker for certain gastric diseases including *Helicobacter pylori* related gastritis. Alternate splicing results in multiple transcript variants. A pseudogene of this gene is found on chromosome 1.

Aliases: Gastricsin antibody, PEPC antibody, PEPC_HUMAN antibody, pepsin C antibody, Pepsinogen C antibody, pepsinogen group II antibody, PGC antibody, PGII antibody, preprogastricsin antibody, Progastricsin antibody

UniProt: [P20142](#)

Application Details

Application Notes: ELISA:1:2000-1:5000, WB:1:500-1:2000, IHC:1:25-1:100,

Restrictions: For Research Use only

Handling

Format: Liquid

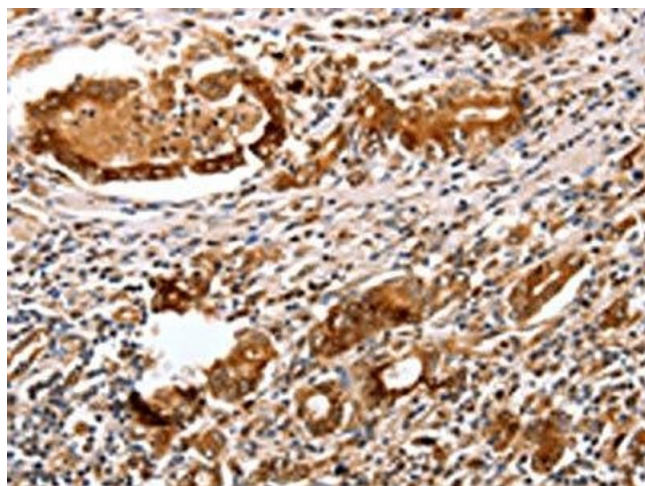
Buffer: -20 °C, pH 7.4 PBS, 0.05 % Sodium azide, 40 % Glycerol

Preservative: Sodium azide

Precaution of Use: This product contains Sodium azide: a POISONOUS AND HAZARDOUS SUBSTANCE which should be handled by trained staff only.

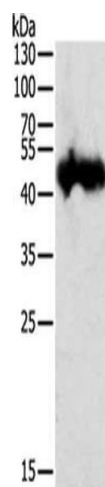
Storage: -20 °C, -80 °C

Storage Comment: Upon receipt, store at -20°C or -80°C. Avoid repeated freeze.



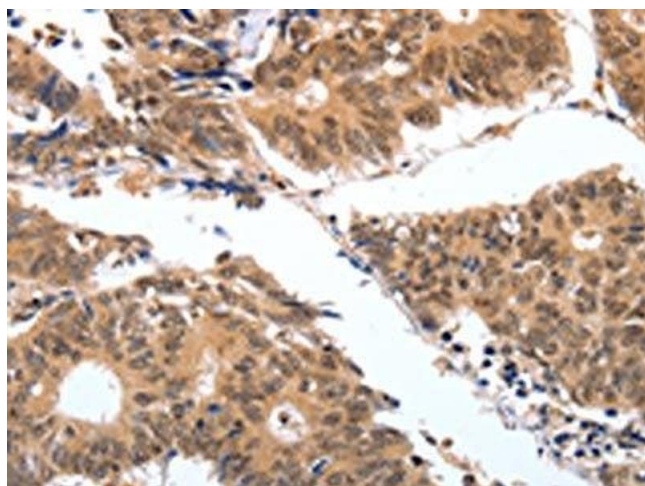
Immunohistochemistry

Image 1. The image on the left is immunohistochemistry of paraffin-embedded Human gastric cancer tissue using ABIN7130598(PGC Antibody) at dilution 1/25, on the right is treated with fusion protein. (Original magnification: x200)



Western Blotting

Image 2. Gel: 12 % SDS-PAGE, Lysate: 50 µg, Lane: 823 cells, Primary antibody: ABIN7130598(PGC Antibody) at dilution 1/300, Secondary antibody: Goat anti rabbit IgG at 1/8000 dilution, Exposure time: 30 seconds



Immunohistochemistry

Image 3. The image on the left is immunohistochemistry of paraffin-embedded Human colon cancer tissue using ABIN7130598(PGC Antibody) at dilution 1/25, on the right is treated with fusion protein. (Original magnification: x200)