

## Datasheet for ABIN7130610

**anti-PHLPP1 antibody**

## 2 Images

[Go to Product page](#)

## Overview

Quantity:	100 µL
Target:	PHLPP1
Reactivity:	Human
Host:	Rabbit
Clonality:	Polyclonal
Conjugate:	This PHLPP1 antibody is un-conjugated
Application:	ELISA, Immunohistochemistry (IHC)

## Product Details

Immunogen:	Fusion protein of Human PHLPP1
Isotype:	IgG
Cross-Reactivity:	Human, Mouse, Rat
Purification:	Antigen affinity purification

## Target Details

Target:	PHLPP1
Alternative Name:	PHLPP1 ( <a href="#">PHLPP1 Products</a> )
Background:	Background: This gene encodes a member of the serine/threonine phosphatase family. The encoded protein promotes apoptosis by dephosphorylating and inactivating the serine/threonine kinase Akt, and functions as a tumor suppressor in multiple types of cancer. Increased expression of this gene may also play a role in obesity and type 2 diabetes by

## Target Details

interfering with Akt-mediated insulin signaling.

Aliases: hSCOP antibody, KIAA0606 antibody, PH domain and leucine rich repeat protein phosphatase antibody, PH domain leucine rich repeat containing protein phosphatase antibody, PH domain leucine rich repeat protein phosphatase antibody, PH domain leucine-rich repeat-containing protein phosphatase 1 antibody, PH domain-containing family E member 1 antibody, PHLP1\_HUMAN antibody, PHLPP antibody, Phlpp1 antibody, Pleckstrin homology domain containing family E (with leucine rich repeats) member 1 antibody, Pleckstrin homology domain containing family E protein 1 antibody, Pleckstrin homology domain-containing family E member 1 antibody, PLEKHE 1 protein antibody, PLEKHE1 antibody, SCN circadian oscillatory protein antibody, SCOP antibody, Suprachiasmatic nucleus circadian oscillatory protein antibody, Suprachiasmatic nucleus circadian protein antibody

UniProt: [O60346](#)

Pathways: [PI3K-Akt Signaling](#), [Fc-epsilon Receptor Signaling Pathway](#), [Neurotrophin Signaling Pathway](#)

## Application Details

Application Notes: ELISA:1:1000-1:2000, IHC:1:25-1:100,

Restrictions: For Research Use only

## Handling

Format: Liquid

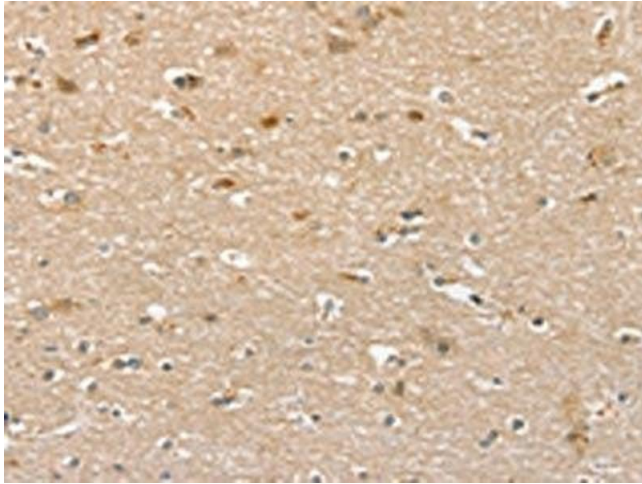
Buffer: -20 °C, pH 7.4 PBS, 0.05 % Sodium azide, 40 % Glycerol

Preservative: Sodium azide

Precaution of Use: This product contains Sodium azide: a POISONOUS AND HAZARDOUS SUBSTANCE which should be handled by trained staff only.

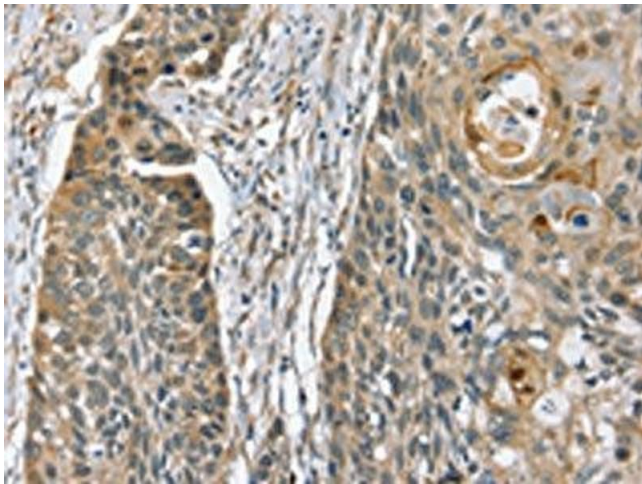
Storage: -20 °C,-80 °C

Storage Comment: Upon receipt, store at -20°C or -80°C. Avoid repeated freeze.



#### Immunohistochemistry

**Image 1.** The image on the left is immunohistochemistry of paraffin-embedded Human brain tissue using ABIN7130610(PHLPP1 Antibody) at dilution 1/35, on the right is treated with fusion protein. (Original magnification: x200)



#### Immunohistochemistry

**Image 2.** The image on the left is immunohistochemistry of paraffin-embedded Human esophagus cancer tissue using ABIN7130610(PHLPP1 Antibody) at dilution 1/35, on the right is treated with fusion protein. (Original magnification: x200)