

Datasheet for ABIN7130641
anti-PIWIL4 antibody



[Go to Product page](#)

2 Images

Overview

Quantity:	100 µL
Target:	PIWIL4
Reactivity:	Human
Host:	Rabbit
Clonality:	Polyclonal
Conjugate:	This PIWIL4 antibody is un-conjugated
Application:	ELISA, Immunohistochemistry (IHC)

Product Details

Immunogen:	Fusion protein of Human PIWIL4
Isotype:	IgG
Cross-Reactivity:	Human, Mouse, Rat
Purification:	Antigen affinity purification

Target Details

Target:	PIWIL4
Alternative Name:	PIWIL4 (PIWIL4 Products)
Background:	Background: PIWIL4 belongs to the Argonaute family of proteins, which function in development and maintenance of germline stem cells. It plays a central role during spermatogenesis by repressing transposable elements and prevent their mobilization, which is essential for the germline integrity. May be involved in the chromatin-modifying pathway by

Target Details

inducing 'Lys-9' methylation of histone H3 at some loci.

Aliases: DKFZp686P01248 antibody, FLJ36156 antibody, HILI 2 antibody, HILI2 antibody, HIWI 2 antibody, HIWI2 antibody, Miwi 2 protein antibody, Miwi2 antibody, PIWI antibody, Piwi like 2 antibody, Piwi like 4 (Drosophila) antibody, Piwi like 4 antibody, Piwi like protein 4 antibody, PIWI like protein antibody, Piwi like RNA mediated gene silencing 4 antibody, Piwi-like protein 4 antibody, PIWIL 4 antibody, Piwil4 antibody, PIWL4_HUMAN antibody

UniProt: [Q7Z3Z4](#)

Application Details

Application Notes: ELISA:1:2000-1:5000, IHC:1:50-1:200,

Restrictions: For Research Use only

Handling

Format: Liquid

Buffer: -20 °C, pH 7.4 PBS, 0.05 % Sodium azide, 40 % Glycerol

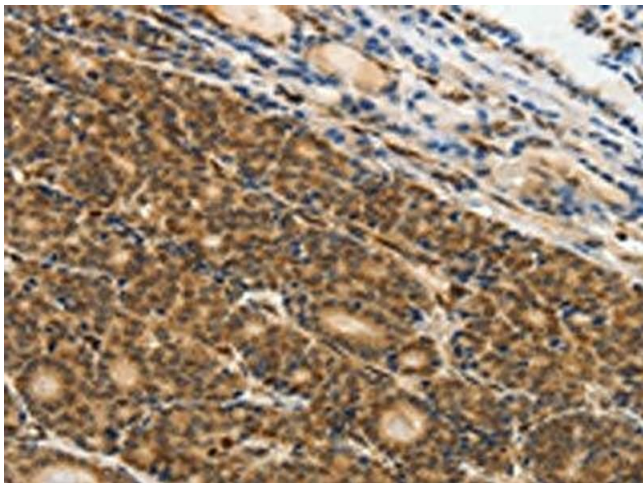
Preservative: Sodium azide

Precaution of Use: This product contains Sodium azide: a POISONOUS AND HAZARDOUS SUBSTANCE which should be handled by trained staff only.

Storage: -20 °C,-80 °C

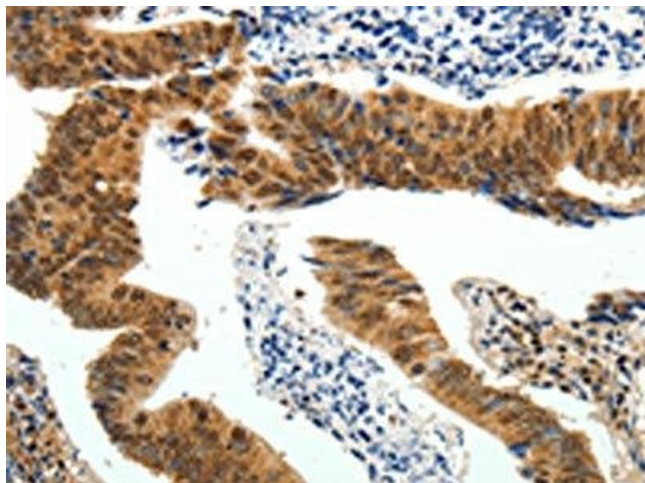
Storage Comment: Upon receipt, store at -20°C or -80°C. Avoid repeated freeze.

Images



Immunohistochemistry

Image 1. The image on the left is immunohistochemistry of paraffin-embedded Human thyroid cancer tissue using ABIN7130641(PIWIL4 Antibody) at dilution 1/25, on the right is treated with fusion protein. (Original magnification: x200)



Immunohistochemistry

Image 2. The image on the left is immunohistochemistry of paraffin-embedded Human colon cancer tissue using ABIN7130641(PIWIL4 Antibody) at dilution 1/25, on the right is treated with fusion protein. (Original magnification: x200)