

Datasheet for ABIN7130695

anti-PRCP antibody

3 Images

[Go to Product page](#)

Overview

Quantity:	100 µL
Target:	PRCP
Reactivity:	Human
Host:	Rabbit
Clonality:	Polyclonal
Conjugate:	This PRCP antibody is un-conjugated
Application:	Western Blotting (WB), Immunohistochemistry (IHC), ELISA

Product Details

Immunogen:	Fusion protein of Human PRCP
Isotype:	IgG
Cross-Reactivity:	Human, Mouse
Purification:	Antigen affinity purification

Target Details

Target:	PRCP
Alternative Name:	PRCP (PRCP Products)
Background:	Background: The protein encoded by this gene is a lysosomal prolylcarboxypeptidase, which cleaves C-terminal amino acids linked to proline in peptides such as angiotension II, III and des-Arg9-bradykinin. The cleavage occurs at acidic pH , but the enzyme activity is retained with some substrates at neutral pH . This enzyme has been shown to be an activator of the cell

Target Details

matrix-associated prekallikrein. The importance of angiotension II, one of the substrates of this enzyme, in regulating blood pressure and electrolyte balance suggests that this gene may be related to essential hypertension. Alternatively spliced transcript variants encoding distinct isoforms have been observed.

Aliases: Angiotensinase C antibody, HUMPCP antibody, Lysosomal carboxypeptidase C antibody, Lysosomal Pro X carboxypeptidase antibody, Lysosomal Pro-X carboxypeptidase antibody, MGC2202 antibody, PCP antibody, PCP_HUMAN antibody, PRCP antibody, Proline carboxypeptidase antibody, Prolylcarboxypeptidase (angiotensinase C) antibody, Prolylcarboxypeptidase antibody, prolylcarboxypeptidase isoform 1 preproprotein antibody

UniProt: [P42785](#)

Application Details

Application Notes: ELISA:1:1000-1:2000, WB:1:200-1:1000, IHC:1:25-1:100,

Restrictions: For Research Use only

Handling

Format: Liquid

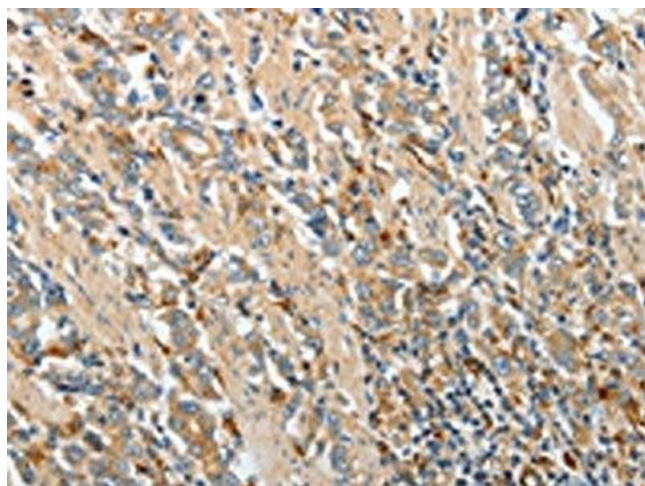
Buffer: -20 °C, pH 7.4 PBS, 0.05 % Sodium azide, 40 % Glycerol

Preservative: Sodium azide

Precaution of Use: This product contains Sodium azide: a POISONOUS AND HAZARDOUS SUBSTANCE which should be handled by trained staff only.

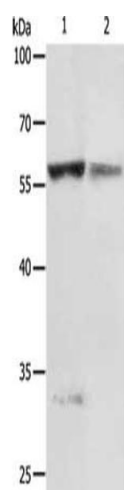
Storage: -20 °C, -80 °C

Storage Comment: Upon receipt, store at -20°C or -80°C. Avoid repeated freeze.



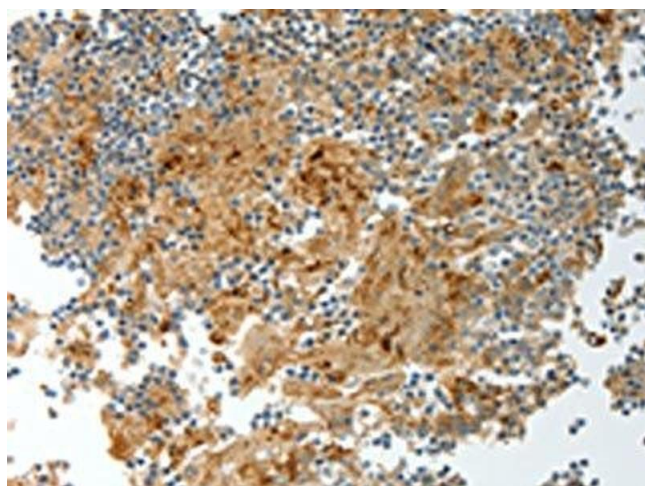
Immunohistochemistry

Image 1. The image on the left is immunohistochemistry of paraffin-embedded Human gastric cancer tissue using ABIN7130695(PRCP Antibody) at dilution 1/20, on the right is treated with fusion protein. (Original magnification: x200)



Western Blotting

Image 2. Gel: 10 % SDS-PAGE, Lysate: 50 µg, Lane 1-2: Jurkat cells, human fetal liver tissue, Primary antibody: ABIN7130695(PRCP Antibody) at dilution 1/200, Secondary antibody: Goat anti rabbit IgG at 1/8000 dilution, Exposure time: 5 minutes



Immunohistochemistry

Image 3. The image on the left is immunohistochemistry of paraffin-embedded Human tonsil tissue using ABIN7130695(PRCP Antibody) at dilution 1/20, on the right is treated with fusion protein. (Original magnification: x200)