

Datasheet for ABIN7130740

anti-PSMD3 antibody**3** Images[Go to Product page](#)

Overview

Quantity:	100 µL
Target:	PSMD3
Reactivity:	Human
Host:	Rabbit
Clonality:	Polyclonal
Conjugate:	This PSMD3 antibody is un-conjugated
Application:	Western Blotting (WB), Immunohistochemistry (IHC), ELISA

Product Details

Immunogen:	Fusion protein of Human PSMD3
Isotype:	IgG
Cross-Reactivity:	Human, Mouse
Purification:	Antigen affinity purification

Target Details

Target:	PSMD3
Alternative Name:	PSMD3 (PSMD3 Products)
Background:	Background: The 26S proteasome is a multicatalytic proteinase complex with a highly ordered structure composed of 2 complexes, a 20S core and a 19S regulator. The 20S core is composed of 4 rings of 28 non-identical subunits, 2 rings are composed of 7 alpha subunits and 2 rings are composed of 7 beta subunits. The 19S regulator is composed of a base, which

Target Details

contains 6 ATPase subunits and 2 non-ATPase subunits, and a lid, which contains up to 10 non-ATPase subunits. Proteasomes are distributed throughout eukaryotic cells at a high concentration and cleave peptides in an ATP/ubiquitin-dependent process in a non-lysosomal pathway. This gene encodes a member of the proteasome subunit S3 family that functions as one of the non-ATPase subunits of the 19S regulator lid. Single nucleotide polymorphisms in this gene are associated with neutrophil count.

Aliases: 26S proteasome non ATPase regulatory subunit 3 antibody, 26S proteasome non-ATPase regulatory subunit 3 antibody, 26S proteasome regulatory subunit RPN3 antibody, 26S proteasome regulatory subunit S3 antibody, OTTHUMP00000164347 antibody, P58 antibody, Proteasome (prosome, macropain) 26S subunit non ATPase 3 antibody, Proteasome subunit p58 antibody, PSMD3 antibody, PSMD3_HUMAN antibody, RPN3 antibody, S3 antibody, Tissue specific transplantation antigen 2 antibody, TSTA2 antibody

UniProt: [O43242](#)

Pathways: [Mitotic G1-G1/S Phases](#), [DNA Replication](#), [Synthesis of DNA](#), [Ubiquitin Proteasome Pathway](#)

Application Details

Application Notes: ELISA:1:1000-1:5000, WB:1:200-1:1000, IHC:1:50-1:200,

Restrictions: For Research Use only

Handling

Format: Liquid

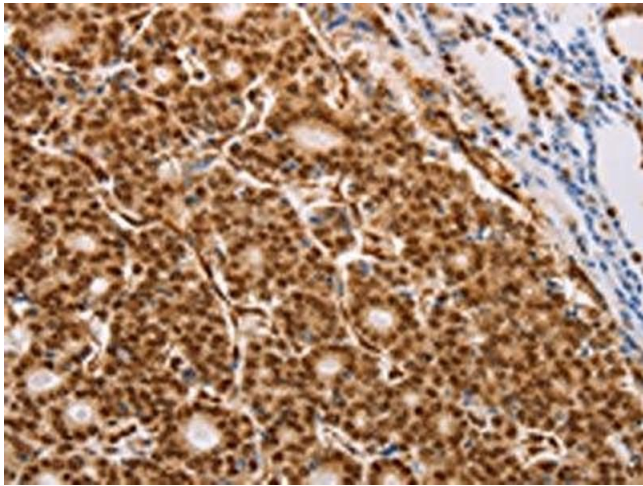
Buffer: -20 °C, pH 7.4 PBS, 0.05 % Sodium azide, 40 % Glycerol

Preservative: Sodium azide

Precaution of Use: This product contains Sodium azide: a POISONOUS AND HAZARDOUS SUBSTANCE which should be handled by trained staff only.

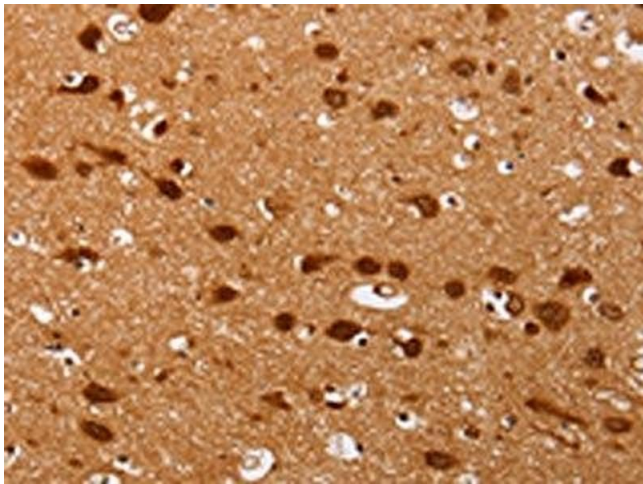
Storage: -20 °C, -80 °C

Storage Comment: Upon receipt, store at -20°C or -80°C. Avoid repeated freeze.



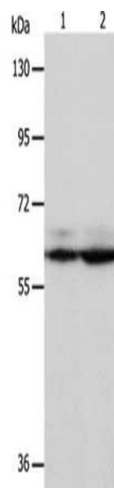
Immunohistochemistry

Image 1. The image on the left is immunohistochemistry of paraffin-embedded Human thyroid cancer tissue using ABIN7130740(PSMD3 Antibody) at dilution 1/25, on the right is treated with fusion protein. (Original magnification: x200)



Immunohistochemistry

Image 2. The image on the left is immunohistochemistry of paraffin-embedded Human brain tissue using ABIN7130740(PSMD3 Antibody) at dilution 1/25, on the right is treated with fusion protein. (Original magnification: x200)



Western Blotting

Image 3. Gel: 8 % SDS-PAGE, Lysate: 40 µg, Lane 1-2: Hela cells, Jurkat cells, Primary antibody: ABIN7130740(PSMD3 Antibody) at dilution 1/300, Secondary antibody: Goat anti rabbit IgG at 1/8000 dilution, Exposure time: 5 seconds