

Datasheet for ABIN7130780

anti-PTPRE antibody**2** Images[Go to Product page](#)

Overview

Quantity:	100 µL
Target:	PTPRE
Reactivity:	Human
Host:	Rabbit
Clonality:	Polyclonal
Conjugate:	This PTPRE antibody is un-conjugated
Application:	Immunohistochemistry (IHC), ELISA

Product Details

Immunogen:	Fusion protein of Human PTPRE
Isotype:	IgG
Cross-Reactivity:	Human, Mouse, Rat
Purification:	Antigen affinity purification

Target Details

Target:	PTPRE
Alternative Name:	PTPRE (PTPRE Products)
Background:	<p>Background: The protein encoded by this gene is a member of the protein tyrosine phosphatase (PTP) family. PTPs are known to be signaling molecules that regulate a variety of cellular processes including cell growth, differentiation, mitotic cycle, and oncogenic transformation.</p> <p>Two alternatively spliced transcript variants of this gene have been reported, one of which</p>

Target Details

encodes a receptor-type PTP that possesses a short extracellular domain, a single transmembrane region, and two tandem intracytoplasmic catalytic domains, Another one encodes a PTP that contains a distinct hydrophilic N-terminus, and thus represents a nonreceptor-type isoform of this PTP. Studies of the similar gene in mice suggested the regulatory roles of this PTP in RAS related signal transduction pathways, cytokines induced SATA signaling, as well as the activation of voltage-gated K⁺ channels.

Aliases: DKFZp313F1310 antibody, FLJ57799 antibody, FLJ58245 antibody, HPTPE antibody, Protein tyrosine phosphatase epsilon antibody, Protein tyrosine phosphatase receptor type E antibody, Protein tyrosine phosphatase receptor type epsilon antibody, Protein tyrosine phosphatase receptor type epsilon polypeptide antibody, Protein-tyrosine phosphatase epsilon antibody, PTPE antibody, Ptpre antibody, PTPRE_HUMAN antibody, R PTP Epsilon antibody, R-PTP-epsilon antibody, Receptor-type tyrosine-protein phosphatase epsilon antibody

UniProt: [P23469](#)

Application Details

Application Notes: ELISA:1:1000-1:5000, IHC:1:15-1:50,

Restrictions: For Research Use only

Handling

Format: Liquid

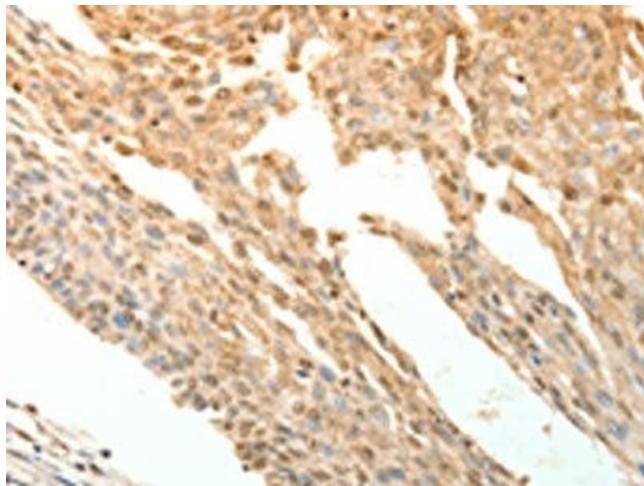
Buffer: -20 °C, pH 7.4 PBS, 0.05 % Sodium azide, 40 % Glycerol

Preservative: Sodium azide

Precaution of Use: This product contains Sodium azide: a POISONOUS AND HAZARDOUS SUBSTANCE which should be handled by trained staff only.

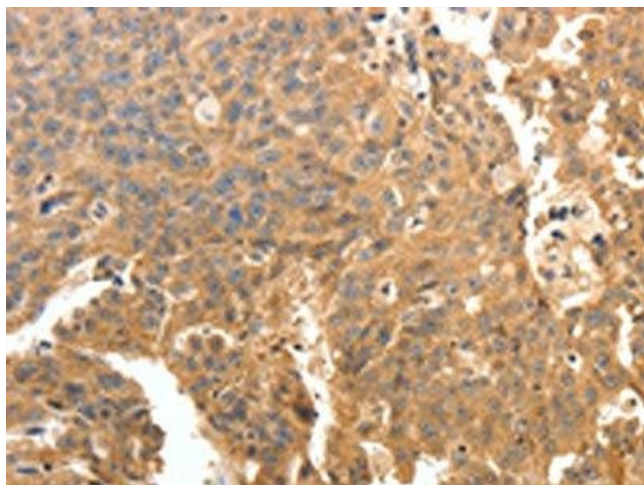
Storage: -20 °C,-80 °C

Storage Comment: Upon receipt, store at -20°C or -80°C. Avoid repeated freeze.



Immunohistochemistry

Image 1. The image on the left is immunohistochemistry of paraffin-embedded Human cervical cancer tissue using ABIN7130780(PTPRE Antibody) at dilution 1/10, on the right is treated with fusion protein. (Original magnification: x200)



Immunohistochemistry

Image 2. The image on the left is immunohistochemistry of paraffin-embedded Human ovarian cancer tissue using ABIN7130780(PTPRE Antibody) at dilution 1/10, on the right is treated with fusion protein. (Original magnification: x200)