

Datasheet for ABIN7130819

anti-RASAL1 antibody**2** Images[Go to Product page](#)

Overview

Quantity:	100 µL
Target:	RASAL1
Reactivity:	Human
Host:	Rabbit
Clonality:	Polyclonal
Conjugate:	This RASAL1 antibody is un-conjugated
Application:	ELISA, Immunohistochemistry (IHC)

Product Details

Immunogen:	Fusion protein of Human RASAL1
Isotype:	IgG
Cross-Reactivity:	Human, Mouse
Purification:	Antigen affinity purification

Target Details

Target:	RASAL1
Alternative Name:	RASAL1 (RASAL1 Products)
Background:	Background: The protein encoded by this gene is member of the GAP1 family of GTPase-activating proteins. These proteins stimulate the GTPase activity of normal RAS p21 but not its oncogenic counterpart. Acting as a suppressor of RAS function, the protein enhances the weak intrinsic GTPase activity of RAS proteins resulting in the inactive GDP-bound form of RAS,

Target Details

thereby allowing control of cellular proliferation and differentiation.

Aliases: GAP1 like protein antibody, MRASAL antibody, RAS GTPase activating protein like antibody, RAS protein activator like 1 (GAP1 like) antibody, RAS protein activator like 1 antibody, RASAL antibody, Rasal1 antibody, rasGAP activating like protein 1 antibody, RasGAP-activating-like protein 1 antibody, RASGAP1 LIKE antibody, RASL1_HUMAN antibody

UniProt: [O95294](#)

Application Details

Application Notes: ELISA:1:2000-1:5000, IHC:1:20-1:100,

Restrictions: For Research Use only

Handling

Format: Liquid

Buffer: -20 °C, pH 7.4 PBS, 0.05 % Sodium azide, 40 % Glycerol

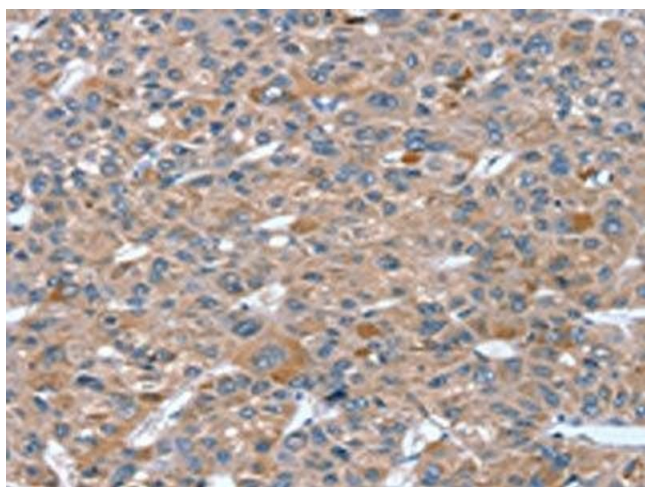
Preservative: Sodium azide

Precaution of Use: This product contains Sodium azide: a POISONOUS AND HAZARDOUS SUBSTANCE which should be handled by trained staff only.

Storage: -20 °C,-80 °C

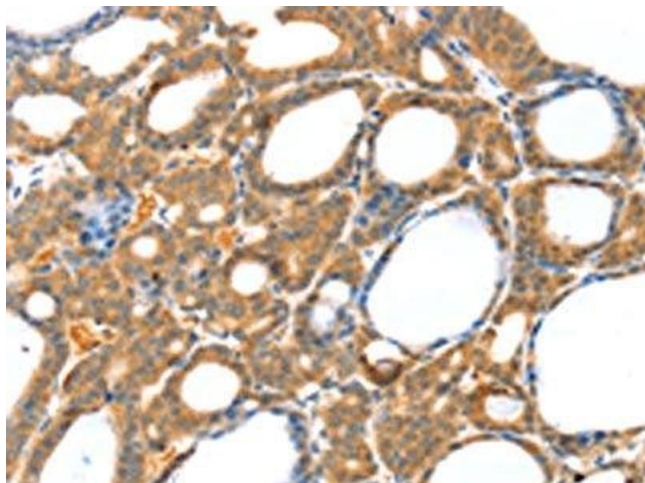
Storage Comment: Upon receipt, store at -20°C or -80°C. Avoid repeated freeze.

Images



Immunohistochemistry

Image 1. The image on the left is immunohistochemistry of paraffin-embedded Human liver cancer tissue using ABIN7130819(RASAL1 Antibody) at dilution 1/20, on the right is treated with fusion protein. (Original magnification: x200)



Immunohistochemistry

Image 2. The image on the left is immunohistochemistry of paraffin-embedded Human thyroid cancer tissue using ABIN7130819(RASAL1 Antibody) at dilution 1/20, on the right is treated with fusion protein. (Original magnification: x200)