

Datasheet for ABIN7130823
anti-RASGEF1A antibody



[Go to Product page](#)

2 Images

Overview

Quantity:	100 µL
Target:	RASGEF1A
Reactivity:	Human
Host:	Rabbit
Clonality:	Polyclonal
Conjugate:	This RASGEF1A antibody is un-conjugated
Application:	ELISA, Immunohistochemistry (IHC)

Product Details

Immunogen:	Fusion protein of Human RASGEF1A
Isotype:	IgG
Cross-Reactivity:	Human
Purification:	Antigen affinity purification

Target Details

Target:	RASGEF1A
Alternative Name:	RASGEF1A (RASGEF1A Products)
Background:	Background: RASGEF1A (RasGEF domain family, member 1A) is a 481 amino acid guanine-nucleotide exchange factor (GEF) for H-Ras, K-Ras, and N-Ras. RASGEF1A may also play a role in cell migration. RASFEF1A is highly expressed in spinal chord and brain and contains one N-terminal Ras-GEF domain and one Ras-GEF domain. The gene that encodes RASGEF1A maps

Target Details

to human chromosome 10, which contains over 800 genes and 135 million nucleotides, making up nearly 4.5 % of the human genome. PTEN is an important tumor suppressor gene located on chromosome 10 and, when defective, causes a genetic predisposition to cancer development known as Cowden syndrome.

Aliases: CG4853 gene product antibody, Ras-GEF domain-containing family member 1A antibody, RasGEF domain family, member 1A antibody, rasgef1a antibody, RGF1A_HUMAN antibody

UniProt: [Q8N9B8](#)

Application Details

Application Notes: ELISA:1:2000-1:5000, IHC:1:20-1:100,

Restrictions: For Research Use only

Handling

Format: Liquid

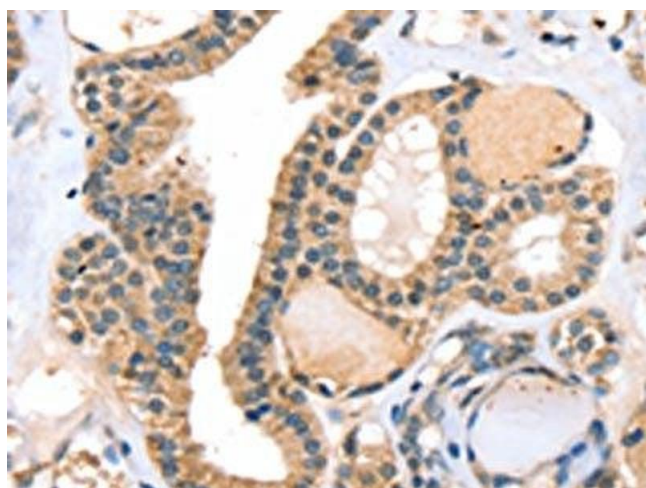
Buffer: -20 °C, pH 7.4 PBS, 0.05 % Sodium azide, 40 % Glycerol

Preservative: Sodium azide

Precaution of Use: This product contains Sodium azide: a POISONOUS AND HAZARDOUS SUBSTANCE which should be handled by trained staff only.

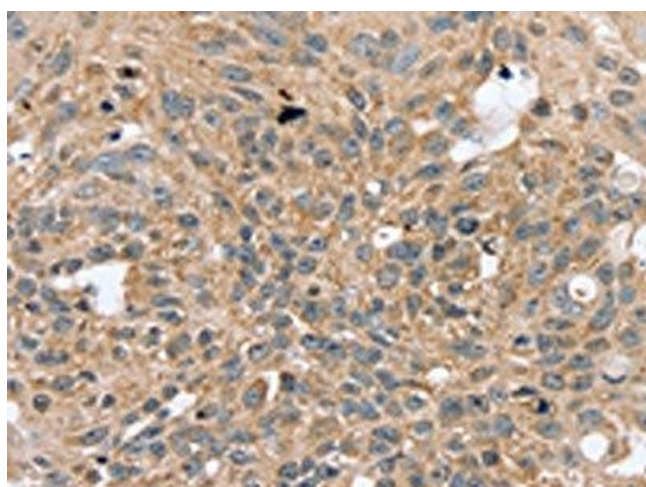
Storage: -20 °C,-80 °C

Storage Comment: Upon receipt, store at -20°C or -80°C. Avoid repeated freeze.



Immunohistochemistry

Image 1. The image on the left is immunohistochemistry of paraffin-embedded Human thyroid cancer tissue using ABIN7130823(RASGEF1A Antibody) at dilution 1/20, on the right is treated with fusion protein. (Original magnification: x200)



Immunohistochemistry

Image 2. The image on the left is immunohistochemistry of paraffin-embedded Human breast cancer tissue using ABIN7130823(RASGEF1A Antibody) at dilution 1/20, on the right is treated with fusion protein. (Original magnification: x200)