



[Go to Product page](#)

Datasheet for ABIN7130871

anti-RGS11 antibody

1 Image

Overview

Quantity:	100 µL
Target:	RGS11
Reactivity:	Human
Host:	Rabbit
Clonality:	Polyclonal
Conjugate:	This RGS11 antibody is un-conjugated
Application:	ELISA, Immunohistochemistry (IHC)

Product Details

Immunogen:	Fusion protein of Human RGS11
Isotype:	IgG
Cross-Reactivity:	Human
Purification:	Antigen affinity purification

Target Details

Target:	RGS11
Alternative Name:	RGS11 (RGS11 Products)
Background:	Background: The protein encoded by this gene belongs to the RGS (regulator of G protein signaling) family. Members of the RGS family act as GTPase-activating proteins on the alpha subunits of heterotrimeric, signal-transducing G proteins. This protein inhibits signal transduction by increasing the GTPase activity of G protein alpha subunits, thereby driving them

Target Details

into their inactive GDP-bound form. Alternative splicing occurs at this locus and four transcript variants encoding distinct isoforms have been identified.

Aliases: Regulator of G protein signaling 11 antibody, Regulator of G protein signalling 11 antibody, Regulator of G-protein signaling 11 antibody, RGS 11 antibody, RGS11 antibody, RGS11_HUMAN antibody, RS 11 antibody, RS11 antibody

UniProt: [O94810](#)

Pathways: [Myometrial Relaxation and Contraction](#), [Regulation of G-Protein Coupled Receptor Protein Signaling](#)

Application Details

Application Notes: ELISA:1:1000-1:2000, IHC:1:10-1:50,

Restrictions: For Research Use only

Handling

Format: Liquid

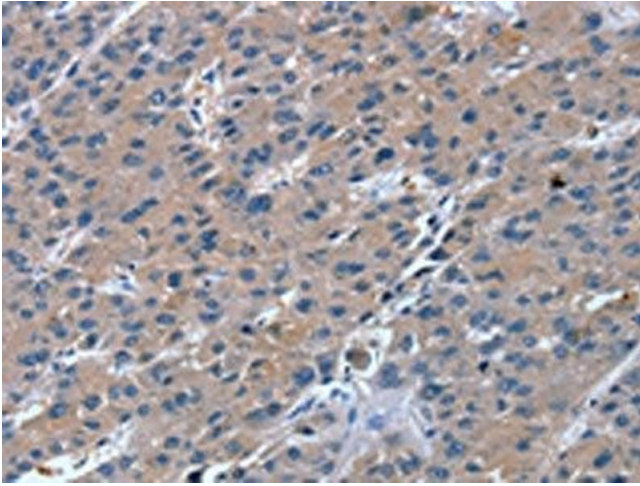
Buffer: -20 °C, pH 7.4 PBS, 0.05 % Sodium azide, 40 % Glycerol

Preservative: Sodium azide

Precaution of Use: This product contains Sodium azide: a POISONOUS AND HAZARDOUS SUBSTANCE which should be handled by trained staff only.

Storage: -20 °C,-80 °C

Storage Comment: Upon receipt, store at -20°C or -80°C. Avoid repeated freeze.



Immunohistochemistry

Image 1. The image on the left is immunohistochemistry of paraffin-embedded Human liver cancer tissue using ABIN7130871(RGS11 Antibody) at dilution 1/20, on the right is treated with fusion protein. (Original magnification: x200)