

Datasheet for ABIN7130886

**anti-Relaxin 1 antibody**[Go to Product page](#)**1** Image

## Overview

Quantity:	100 µL
Target:	Relaxin 1 (RLN1)
Reactivity:	Human
Host:	Rabbit
Clonality:	Polyclonal
Conjugate:	This Relaxin 1 antibody is un-conjugated
Application:	ELISA, Immunohistochemistry (IHC)

## Product Details

Immunogen:	Fusion protein of Human RLN1
Isotype:	IgG
Cross-Reactivity:	Human
Purification:	Antigen affinity purification

## Target Details

Target:	Relaxin 1 (RLN1)
Alternative Name:	RLN1 ( <a href="#">RLN1 Products</a> )
Background:	Background: Relaxins are known endocrine and autocrine/paracrine hormones, belonging to the insulin gene superfamily. In humans there are three non-allelic relaxin genes, RLN1, RLN2 and RLN3, where RLN1 and RLN2 share high sequence homology. The protein encoded by this gene is synthesized as a single-chain polypeptide but the active form consists of an A chain

## Target Details

and a B chain linked by disulfide bonds. Relaxin is produced by the ovary, and targets the mammalian reproductive system to ripen the cervix, elongate the pubic symphysis and inhibit uterine contraction. It may have additional roles in enhancing sperm motility, regulating blood pressure, controlling heart rate and releasing oxytocin and vasopressin.

Aliases: H1 antibody, H1RLX antibody, Preprorelaxin H1 antibody, Prorelaxin antibody, Prorelaxin H1 antibody, REL1\_HUMAN antibody, Relaxin A chain antibody, Relaxin H1 antibody, RLN 1 antibody, Rln1 antibody, RLXH1 antibody

UniProt: [P04808](#)

## Application Details

Application Notes: ELISA:1:2000-1:5000, IHC:1:25-1:100,

Restrictions: For Research Use only

## Handling

Format: Liquid

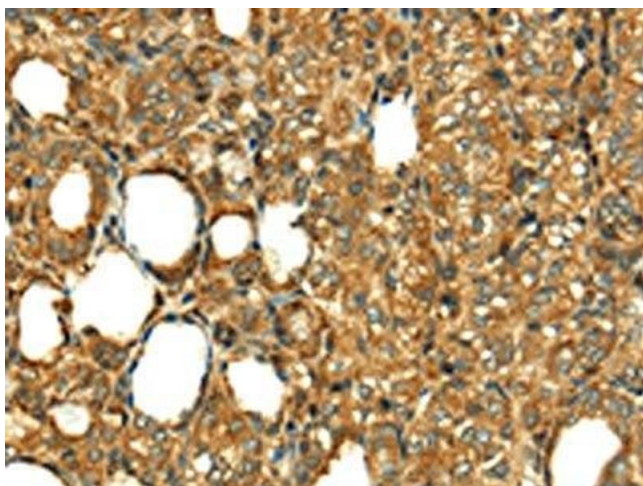
Buffer: -20 °C, pH 7.4 PBS, 0.05 % Sodium azide, 40 % Glycerol

Preservative: Sodium azide

Precaution of Use: This product contains Sodium azide: a POISONOUS AND HAZARDOUS SUBSTANCE which should be handled by trained staff only.

Storage: -20 °C, -80 °C

Storage Comment: Upon receipt, store at -20°C or -80°C. Avoid repeated freeze.



#### Immunohistochemistry

**Image 1.** The image on the left is immunohistochemistry of paraffin-embedded Human thyroid cancer tissue using ABIN7130886(RLN1 Antibody) at dilution 1/20, on the right is treated with fusion protein. (Original magnification: x200)