



[Go to Product page](#)

Datasheet for ABIN7130969

anti-SAR1B antibody

2 Images

Overview

Quantity:	100 µL
Target:	SAR1B
Reactivity:	Human
Host:	Rabbit
Clonality:	Polyclonal
Conjugate:	This SAR1B antibody is un-conjugated
Application:	ELISA, Immunohistochemistry (IHC)

Product Details

Immunogen:	Fusion protein of Human SAR1B
Isotype:	IgG
Cross-Reactivity:	Human, Mouse, Rat
Purification:	Antigen affinity purification

Target Details

Target:	SAR1B
Alternative Name:	SAR1B (SAR1B Products)
Background:	Background: The protein encoded by this gene is a small GTPase that acts as a homodimer. The encoded protein is activated by the guanine nucleotide exchange factor PREB and is involved in protein transport from the endoplasmic reticulum to the Golgi. This protein is part of the COPII coat complex. Defects in this gene are a cause of chylomicron retention disease

Target Details

(CMRD), also known as Anderson disease (ANDD). Two transcript variants encoding the same protein have been found for this gene.

Aliases: ANDD antibody, CMRD antibody, GTBPB antibody, GTP binding protein SAR1b antibody, GTP binding protein Sara antibody, GTP-binding protein B antibody, GTP-binding protein SAR1B antibody, SAR1 gene homolog B (*S. cerevisiae*) antibody, SAR1 homolog B antibody, SAR1a gene homolog 2 antibody, SAR1B antibody, SAR1B_HUMAN antibody, SARA2 antibody, SARB antibody

UniProt: [Q9Y6B6](#)

Pathways: [Lipid Metabolism](#)

Application Details

Application Notes: ELISA:1:1000-1:2000, IHC:1:25-1:100,

Restrictions: For Research Use only

Handling

Format: Liquid

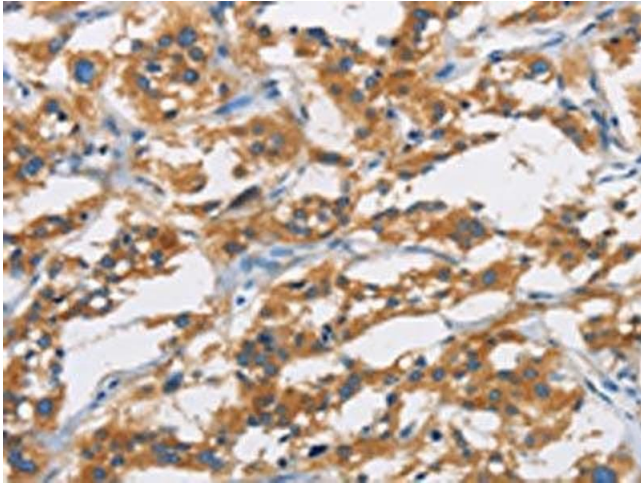
Buffer: -20 °C, pH 7.4 PBS, 0.05 % Sodium azide, 40 % Glycerol

Preservative: Sodium azide

Precaution of Use: This product contains Sodium azide: a POISONOUS AND HAZARDOUS SUBSTANCE which should be handled by trained staff only.

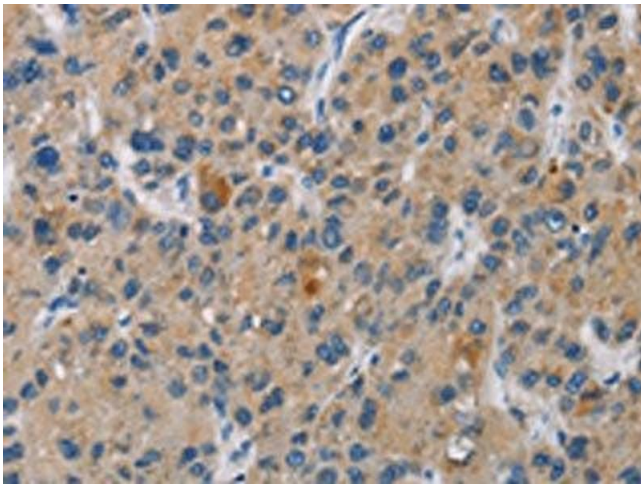
Storage: -20 °C,-80 °C

Storage Comment: Upon receipt, store at -20°C or -80°C. Avoid repeated freeze.



Immunohistochemistry

Image 1. The image is immunohistochemistry of paraffin-embedded Human thyroid cancer tissue using ABIN7130969(SAR1B Antibody) at dilution 1/20. (Original magnification: x200)



Immunohistochemistry

Image 2. The image is immunohistochemistry of paraffin-embedded Human liver cancer tissue using ABIN7130969(SAR1B Antibody) at dilution 1/20. (Original magnification: x200)