



[Go to Product page](#)

Datasheet for ABIN7130971

## anti-SREBF chaperone antibody

### 2 Images

#### Overview

Quantity:	100 µL
Target:	SREBF chaperone (SCAP)
Reactivity:	Human
Host:	Rabbit
Clonality:	Polyclonal
Conjugate:	This SREBF chaperone antibody is un-conjugated
Application:	ELISA, Immunohistochemistry (IHC)

#### Product Details

Immunogen:	Fusion protein of Human SCAP
Isotype:	IgG
Cross-Reactivity:	Human, Mouse, Rat
Purification:	Antigen affinity purification

#### Target Details

Target:	SREBF chaperone (SCAP)
Alternative Name:	SCAP ( <a href="#">SCAP Products</a> )
Background:	Background: This gene encodes a protein with a sterol sensing domain (SSD) and seven WD domains. In the presence of cholesterol, this protein binds to sterol regulatory element binding proteins (SREBPs) and mediates their transport from the ER to the Golgi. The SREBPs are then proteolytically cleaved and regulate sterol biosynthesis.

## Target Details

Aliases: KIAA0199 antibody, SCAP antibody, SCAP\_HUMAN antibody, SREBF chaperone antibody, SREBF chaperone protein antibody, SREBP cleavage activating protein antibody, SREBP cleavage-activating protein antibody, Sterol regulatory element binding protein cleavage-activating protein antibody, Sterol regulatory element-binding protein cleavage-activating protein antibody

UniProt: [Q12770](#)

Pathways: [SARS-CoV-2 Protein Interactome](#)

## Application Details

Application Notes: ELISA:1:2000-1:5000, IHC:1:25-1:100,

Restrictions: For Research Use only

## Handling

Format: Liquid

Buffer: -20 °C, pH 7.4 PBS, 0.05 % Sodium azide, 40 % Glycerol

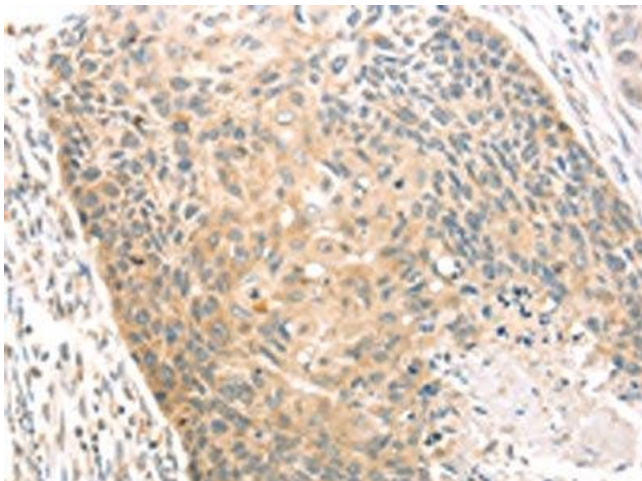
Preservative: Sodium azide

Precaution of Use: This product contains Sodium azide: a POISONOUS AND HAZARDOUS SUBSTANCE which should be handled by trained staff only.

Storage: -20 °C,-80 °C

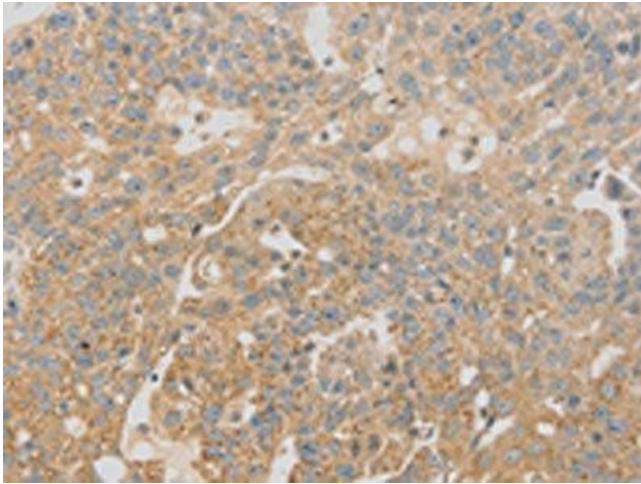
Storage Comment: Upon receipt, store at -20°C or -80°C. Avoid repeated freeze.

## Images



### Immunohistochemistry

**Image 1.** The image on the left is immunohistochemistry of paraffin-embedded Human esophagus cancer tissue using ABIN7130971(SCAP Antibody) at dilution 1/20, on the right is treated with fusion protein. (Original magnification: x200)



### Immunohistochemistry

**Image 2.** The image on the left is immunohistochemistry of paraffin-embedded Human breast cancer tissue using ABIN7130971(SCAP Antibody) at dilution 1/20, on the right is treated with fusion protein. (Original magnification: x200)